

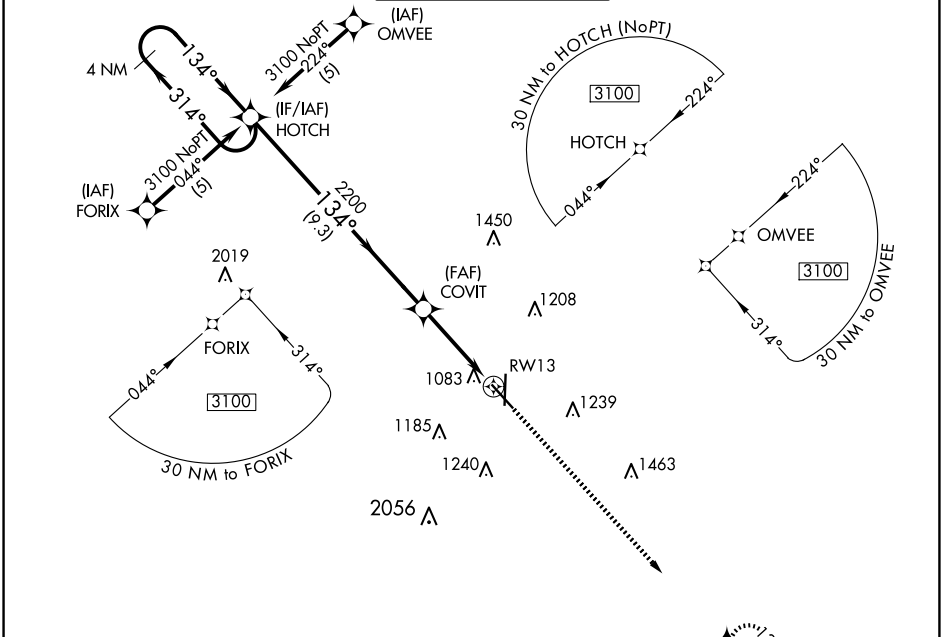
WAAS CH <b>90109</b> <b>W13A</b>	APP CRS <b>134°</b>	Rwy Idg TDZE <b>968</b> Apt Elev <b>978</b>	<b>5813</b>
--	------------------------	---	-------------

# RNAV (GPS) RWY 13

JOPLIN RGNL (JLN)

RNP APCH.	MALSF	MISSED APPROACH: Climb to 3100 direct HOVIL and hold.
MALSF (NSTD) 1368'. Baro-VNAV NA below -16°C (4°F). For inop MALSF, increase LPV Cats A/B/C visibility to 1.		

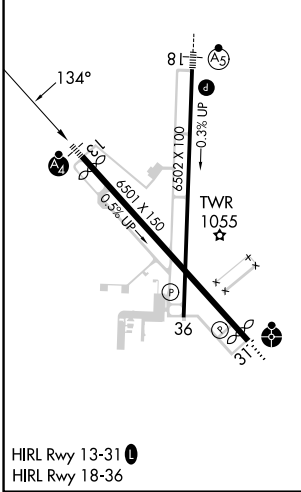
ATIS <b>120.85</b>	KANSAS CITY CENTER <b>128.6 282.325</b>	JOPLIN TOWER* <b>119.8 (CTAF) 0</b>	GND CON <b>121.6</b>	UNICOM <b>122.95</b>
-----------------------	--	--	-------------------------	-------------------------



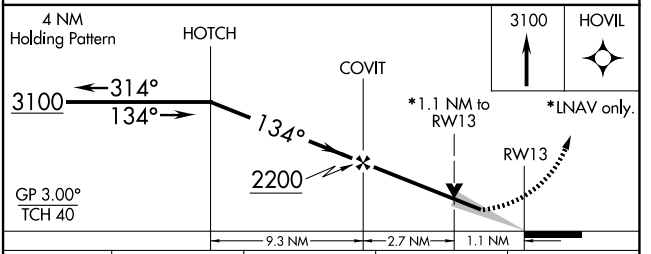
NC-3, 20 MAR 2025 to 17 APR 2025

NC-3, 20 MAR 2025 to 17 APR 2025

ELEV 978	<b>D</b>	TDZE 968
----------	----------	----------



HIRL Rwy 13-31  
HIRL Rwy 18-36



CATEGORY	A	B	C	D
LPV DA	1220-¾ 252 (300-¾)		1220-1 252 (300-1)	
LNAV/VNAV DA	1380-1¼ 412 (400-1¼)		1380-1½ 412 (400-1½)	
LNAV MDA	1340-¾ 372 (400-¾)		1340-1 372 (400-1)	
<b>C</b> CIRCLING	1500-1½ 522 (600-1½)		1540-1½ 562 (600-1½)	
			1600-2 622 (700-2)	