

WAAS CH 86213 W18A	APP CRS 182°	Rwy Idg 7094 TDZE 2130 Apt Elev 2132
--	------------------------	---

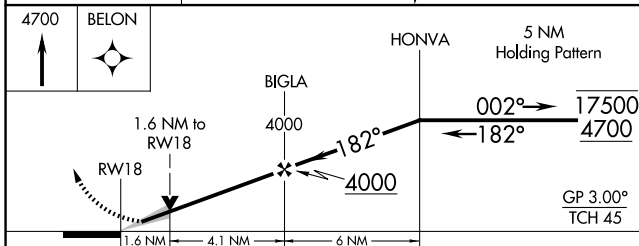
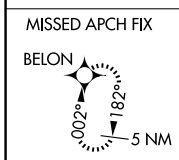
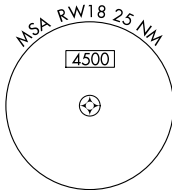
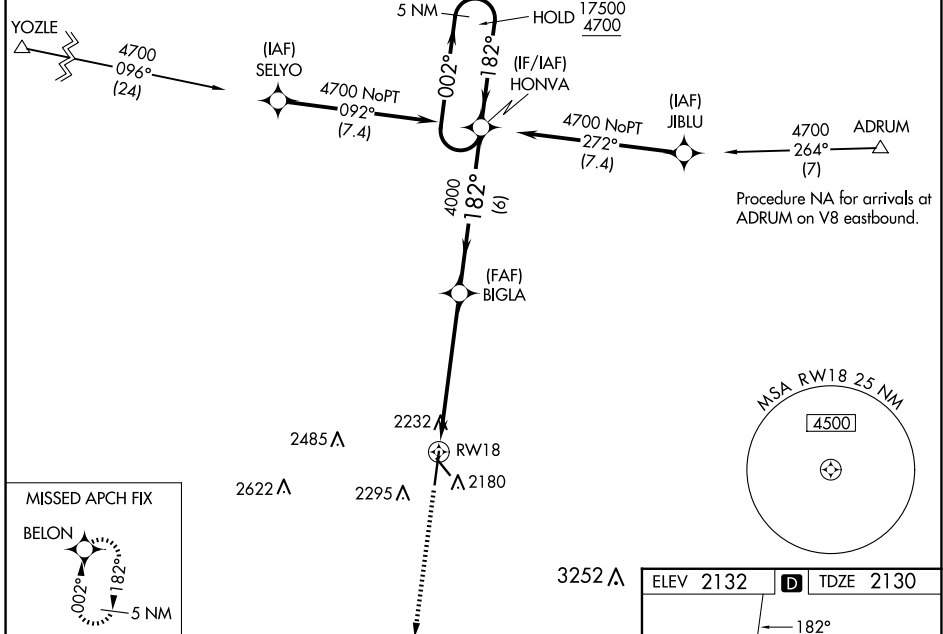
RNAV (GPS) RWY 18

KEARNEY RGNL (E.A.R.)

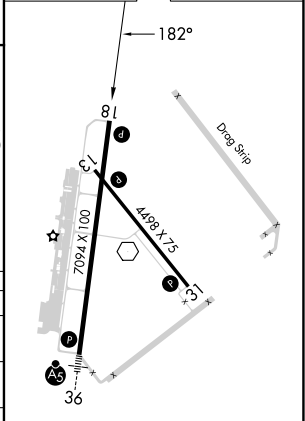
RNP APCH - GPS.	MISSED APPROACH: Climb to 4700 direct BELON and hold.
<p>⚠ For uncompensated Baro-VNAV systems, LNAV/VNAV NA below -23°C or above 54°C.</p>	

AWOS-3PT 123.875	MINNEAPOLIS CENTER 119.4 278.8	UNICOM 123.0 (CTAF) Ⓛ
----------------------------	--	--

Procedure NA for arrivals at YOZLE on V6 westbound.



ELEV 2132	D TDZE 2130
-----------	--------------------



CATEGORY	A	B	C	D
LPV DA		2330-3/4	200 (200-3/4)	
LNAV/VNAV DA		2393-7/8	263 (300-7/8)	
LNAV MDA	2680-1	550 (600-1)	2680-1 5/8	550 (600-1 5/8)
C CIRCLING	2680-1	548 (600-1)	2680-1 5/8	2840-2 1/4
			548 (600-1 5/8)	708 (800-2 1/4)

HIRL Rwy 18-36 Ⓛ
MIRL Rwy 13-31 Ⓛ
REIL Rwy 18 Ⓛ

NC-2, 20 MAR 2025 to 17 APR 2025

NC-2, 20 MAR 2025 to 17 APR 2025