

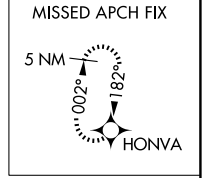
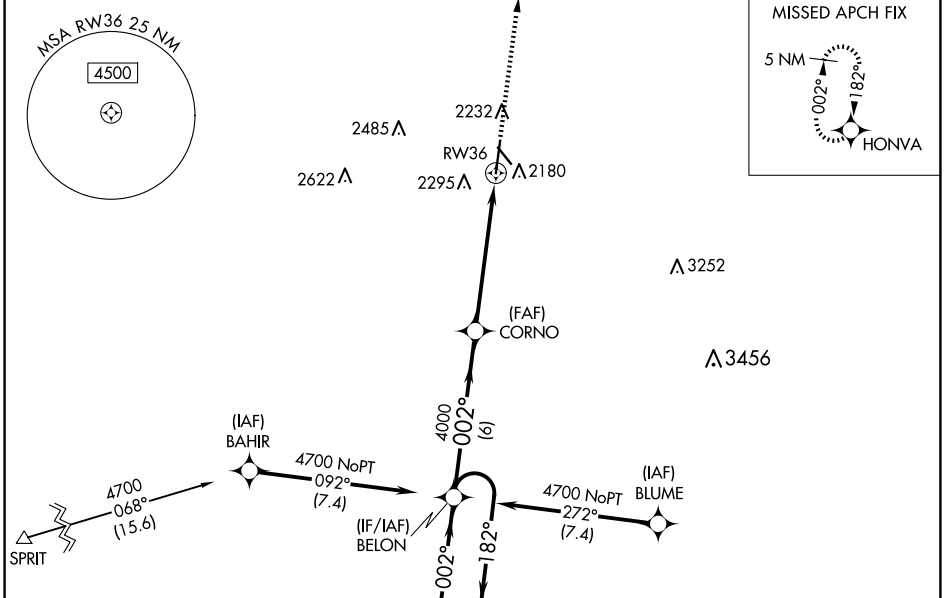
WAAS CH 90113 W36A	APP CRS 002°	Rwy Idg 7094 TDZE 2132 Apt Elev 2132
--	------------------------	---

RNAV (GPS) RWY 36

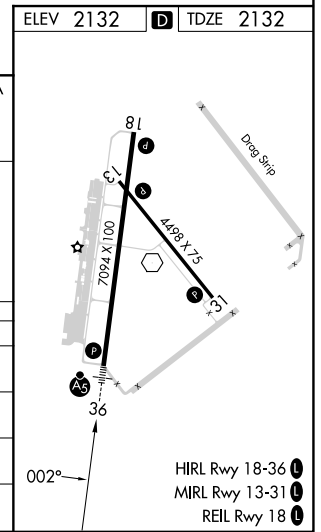
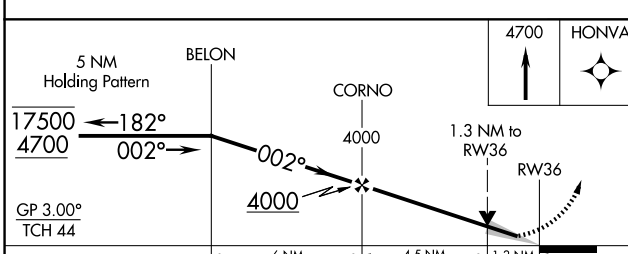
KEARNEY RGNL (E.A.R.)

RNP APCH - GPS.	MALSR 	MISSED APPROACH: Climb to 4700 direct HONVA and hold.
<p> For uncompensated Baro-VNAV systems, LNAV/VNAV NA below -22°C or above 54°C. For inop ALS, increase LNAV/VNAV all Cats visibility to ½ SM.</p>		

AWOS-3PT 123.875	MINNEAPOLIS CENTER 119.4 278.8	UNICOM 123.0 (CTAF)
----------------------------	--	-------------------------------



Procedure NA for arrivals at SPRIT on V220 southwest bound.



CATEGORY	A	B	C	D
LPV DA	2332-½		200 (200-½)	
LNAV/VNAV DA	2419-½		287 (300-½)	
LNAV MDA	2580-½ 448 (500-½)		2580-7/8 448 (500-7/8)	
CIRCLING	2600-1	468 (500-1)	2640-1½ 508 (600-1½)	2840-2¼ 708 (800-2¼)

NC-2, 20 MAR 2025 to 17 APR 2025

NC-2, 20 MAR 2025 to 17 APR 2025