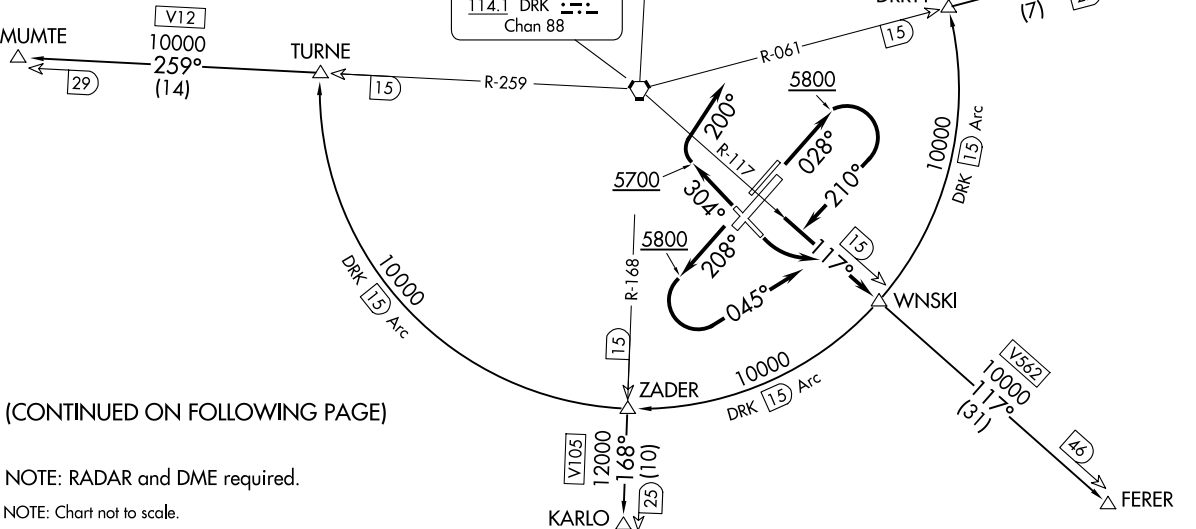


WNSKI TWO DEPARTURE  
(WNSKI2.WNSKI) 20JUN19

**TOP ALTITUDE:**  
**KACEE, KARLO TRANSITIONS: 12000**  
**FERER, JUWSO, MUMTE TRANSITIONS: 10000**

**TAKEOFF MINIMUMS**

- Rwy 3L: Standard with minimum climb of 330' per NM to 6800.
- Rwy 3R: Standard with minimum climb of 340' per NM to 6800.
- Rwy 12: Standard with minimum climb of 500' per NM to 7100.
- Rwys 21L: Standard with minimum climb of 335' per NM to 7000.
- Rwys 21R: Standard with minimum climb of 335' per NM to 7100.
- Rwy 30: Standard with minimum climb of 400' per NM to 6900.



(CONTINUED ON FOLLOWING PAGE)

NOTE: RADAR and DME required.

NOTE: Chart not to scale.

PRESCOTT, ARIZONA  
PRESCOTT RGNL/ERNEST A LOVE FLD (PRC)

PHOENIX DEP CON  
133.575 281.55  
ATIS  
127.2  
CLNC DEL  
119.25  
GND CON  
121.7  
PRESCOTT TOWER\*  
125.3 257.9

(WNSKI2.WNSKI) 24305  
WNSKI TWO DEPARTURE

AL-546 (FAA)

PRESCOTT RGNL/ERNEST A LOVE FLD (PRC)  
PRESCOTT, ARIZONA



DEPARTURE ROUTE DESCRIPTION

TAKEOFF RUNWAYS 3L/R: Climb on heading 028° to 5800, then climbing right turn to heading 210° to intercept DRK VORTAC R-117 to WNSKI, thence. . . .

TAKEOFF RUNWAY 12: Climbing left turn to intercept DRK VORTAC R-117 to WNSKI, thence. . . .

TAKEOFF RUNWAYS 21L/R: Climb on heading 208° to 5800, then climbing left turn heading 045° to intercept DRK VORTAC R-117 to WNSKI, thence. . . .

TAKEOFF RUNWAY 30: Climb on heading 304° to 5700, then climbing right turn to heading 200° to intercept DRK VORTAC R-117 to WNSKI, thence. . . .

. . . .on transition. FERER, JUWSO, MUMTE, transitions maintain 10000. KACEE, KARLO, transitions maintain 12000. Expect filed altitude 5 minutes after departure.

FERER TRANSITION (WNSKI2.FERER): From over WNSKI on DRK R-117 to FERER.

JUWSO TRANSITION (WNSKI2.JUWSO): From over WNSKI on DRK 15 DME Arc CCW to DRRTY, then on DRK R-061 to JUWSO.

KACEE TRANSITION (WNSKI2.KACEE): From over WNSKI on DRK 15 DME Arc CCW to PHYLE, then on DRK R-349 to KACEE.

KARLO TRANSITION (WNSKI2.KARLO): From over WNSKI on DRK 15 DME Arc CW to ZADER, then on DRK R-168 to KARLO.

MUMTE TRANSITION (WNSKI2.MUMTE): From over WNSKI on DRK 15 DME Arc CW to TURNE, then on DRK R-259 to MUMTE.

SW-4, 20 MAR 2025 to 17 APR 2025

SW-4, 20 MAR 2025 to 17 APR 2025