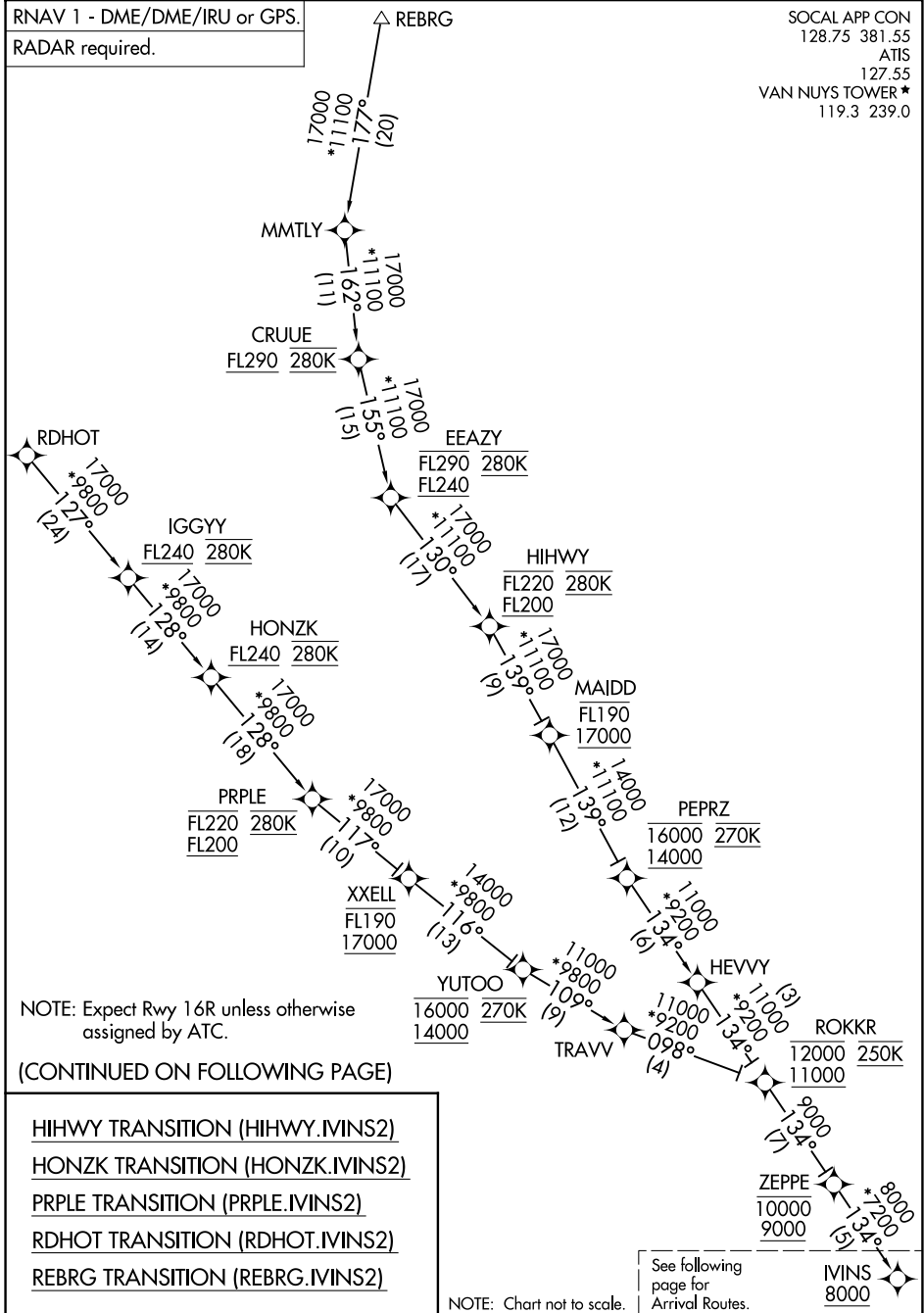


IVINS TWO ARRIVAL (RNAV) Transition Routes

RNAV 1 - DME/DME/IRU or GPS.
RADAR required.

SOCAL APP CON
128.75 381.55
ATIS
127.55
VAN NUYS TOWER *
119.3 239.0



NOTE: Expect Rwy 16R unless otherwise assigned by ATC.

(CONTINUED ON FOLLOWING PAGE)

- HIHWY TRANSITION (HIHWY.IVINS2)
- HONZK TRANSITION (HONZK.IVINS2)
- PRPLE TRANSITION (PRPLE.IVINS2)
- RDHOT TRANSITION (RDHOT.IVINS2)
- REBRG TRANSITION (REBRG.IVINS2)

NOTE: Chart not to scale.

See following page for Arrival Routes.

SW-3, 20 MAR 2025 to 17 APR 2025

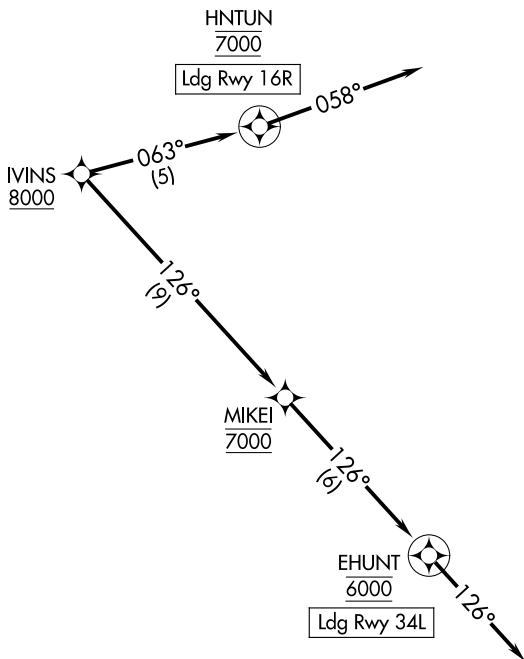
SW-3, 20 MAR 2025 to 17 APR 2025

IVINS TWO ARRIVAL (RNAV) Transition Routes

IVINS TWO ARRIVAL (RNAV) Arrival Routes

SOCAL APP CON
128.75 381.55
ATIS
127.55
VAN NUYS TOWER*
119.3 239.0

RNAV 1 - DME/DME/IRU or GPS.
RADAR required.



SW-3, 20 MAR 2025 to 17 APR 2025

SW-3, 20 MAR 2025 to 17 APR 2025

NOTE: Expect Rwy 16R unless otherwise assigned by ATC.

NOTE: Chart not to scale.

ARRIVAL ROUTE DESCRIPTION

LANDING RUNWAY 16R: From IVINS on track 063° to cross HNTUN at 7000, then on track 058°. Expect RADAR vectors to final approach course.

LANDING RUNWAY 34L: From IVINS on track 126° to cross MIKEI at 7000, then on track 126° to cross EHUNT at 6000, then on track 126°. Expect RADAR vectors to final approach course.