

**TOP ALTITUDE:
ASSIGNED BY ATC**

EDWARDS
116.4 EDW
Chan 111

DAGGETT
113.2 DAG
Chan 79

VICTORVILLE
109.05 VCV
Chan 27(Y)

PALMDALE
115.55 PMD
Chan 102(Y)

VAN NUYS
113.1 VNY
Chan 78

LOS ANGELES
113.6 LAX
Chan 83

LAKE HUGHES
114.35 LHS
Chan 90 (Y)

FILLMORE
112.5 FIM
Chan 72

VENTURA
116.55 VTU
Chan 112(Y)

ATIS
127.55
CLNC DEL
126.6 239.0
CPDLC
GND CON
121.7
SOCAL DEP CON
124.6 298.85

(NUAL1.IPIHO) 24025
NEWHAAL ONE DEPARTURE

AI-552 (FAA)

VAN NUYS (VNY)
VAN NUYS, CALIFORNIA

TAKEOFF MINIMUMS

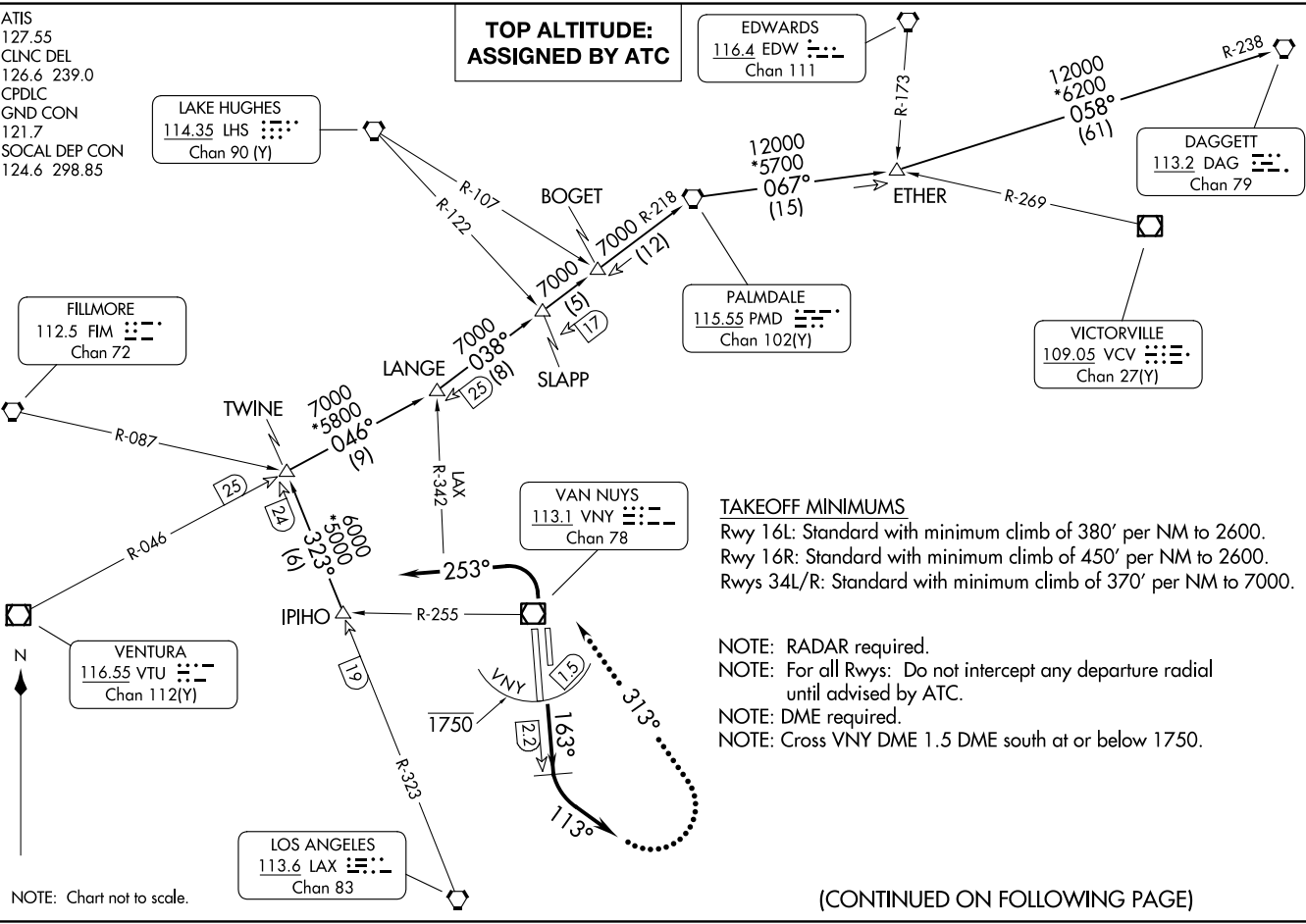
Rwy 16L: Standard with minimum climb of 380' per NM to 2600.
Rwy 16R: Standard with minimum climb of 450' per NM to 2600.
Rwys 34L/R: Standard with minimum climb of 370' per NM to 7000.

- NOTE: RADAR required.
- NOTE: For all Rwys: Do not intercept any departure radial until advised by ATC.
- NOTE: DME required.
- NOTE: Cross VNY DME 1.5 DME south at or below 1750.

(CONTINUED ON FOLLOWING PAGE)

NEWHAAL ONE DEPARTURE
(NUAL1.IPIHO) 30JAN20

VAN NUYS, CALIFORNIA
VAN NUYS (VNY)





DEPARTURE ROUTE DESCRIPTION

TAKEOFF RUNWAYS 16L/R: Climb on heading 163° until VNY 2.2 DME, then climbing left turn heading 113°, FOR RADAR VECTORS to IPIHO, thence. . . .

TAKEOFF RUNWAYS 34L/R: Climbing left turn heading 253°, FOR RADAR VECTORS to IPIHO thence. . . .

. . . .on (transition) or (assigned route). Maintain ATC assigned altitude, expect filed altitude/flight level 10 minutes after departure.

LOST COMMUNICATIONS: If not in contact with departure control within 5 DME from VNY VOR/DME, Rwys 16L/R; turn left heading 313° to intercept the LAX R-342; and continue the published procedure.

DAGGETT TRANSITION (NUAL1.DAG): From over IPIHO on LAX R-323 to TWINE, then on VTU R-046 to LANGE, then on PMD R-218 to PMD VORTAC, then on PMD R-067 to ETHER, then on DAG R-238 to DAG VORTAC.

PALMDALE TRANSITION (NUAL1.PMD): From over IPIHO on LAX R-323 to TWINE, then on VTU R-046 to LANGE, then on PMD R-218 to PMD VORTAC.

SW-3, 20 MAR 2025 to 17 APR 2025

SW-3, 20 MAR 2025 to 17 APR 2025