

VOR/DME VNY	APP CRS	Rwy Idg TDZE	N/A
113.1	155°	Apt Elev	802
Chan 78			

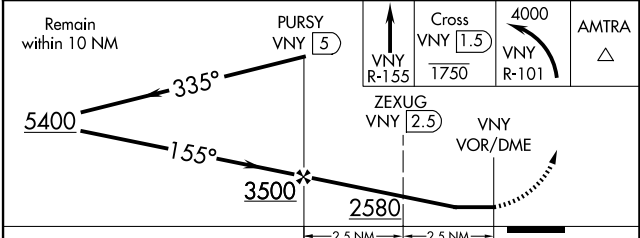
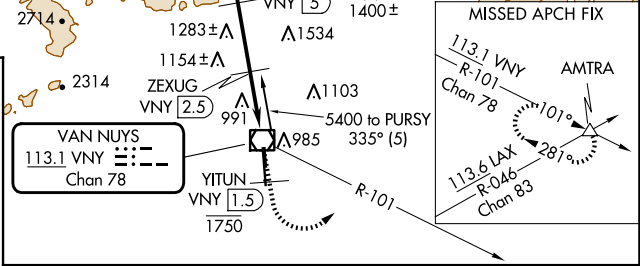
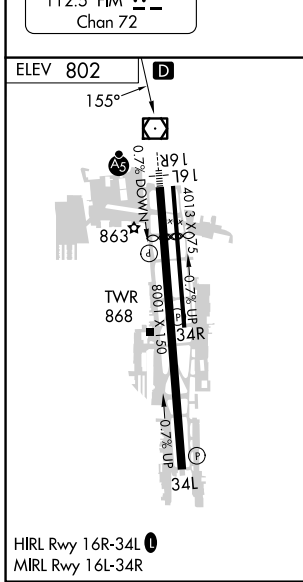
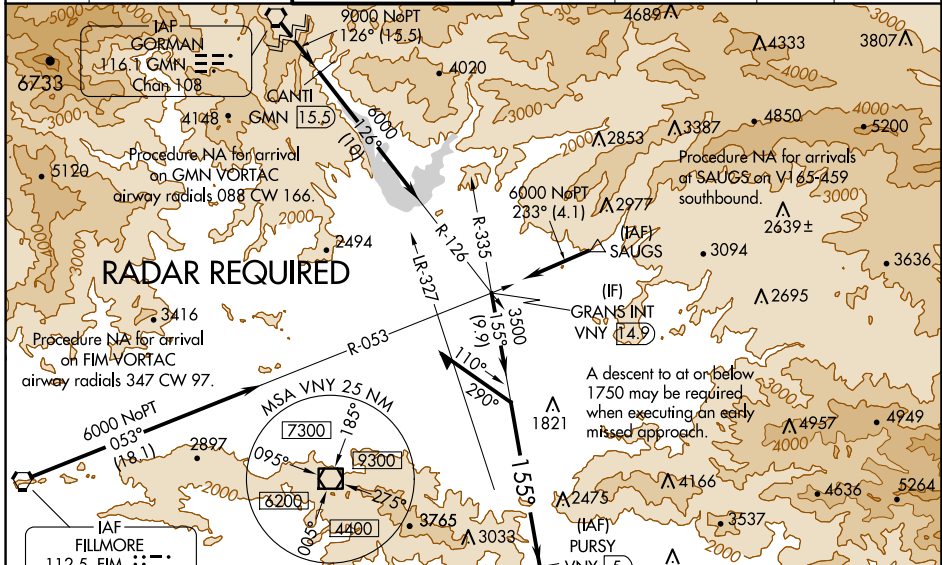
VOR-B

VAN NUYS (VNY)

⚠ DME required and RADAR required for monitoring of missed approach. Circling Rwy 16L NA at night. Circling NA for Cat D west of Rwy 16R-34L. When local altimeter setting not received, use Burbank altimeter setting and increase all MDAs to 20 feet.

MISSED APPROACH: Climb on VNY VOR/DME R-155 to cross YITUN/VNY 1.5 DME at or below 1750 then climbing left turn to 4000 on VNY VOR/DME R-101 to AMTRA INT and hold.

ATIS	SOCAL APP CON	VAN NUYS TOWER*	GND CON	CLNC DEL	CPDLC	UNICOM
127.55	120.4 360.6 (NORTH) 134.2 338.2 (WEST)	119.3 (CTAF) 0 239.0	121.7	126.6 239.0		122.95



CATEGORY	A	B	C	D
C CIRCLING	1660-1¼	858 (900-1¼)	1660-2½	1740-3
			858 (900-2½)	938 (1000-3)

SW-3, 20 MAR 2025 to 17 APR 2025

SW-3, 20 MAR 2025 to 17 APR 2025