

AIRPORT DIAGRAM

AL-556 (FAA)

AUSTIN-BERGSTROM INTL (AUS)

AUSTIN, TEXAS

**CAUTION: BE ALERT TO RUNWAY CROSSING CLEARANCES.
READEBACK OF ALL RUNWAY HOLDING INSTRUCTIONS IS REQUIRED.**

- D-ATIS 124.4
- AUSTIN TOWER 121.0 281.5
- GND CON 121.9 348.6
- CLNC DEL 125.5 263.0
- CPDLC
- PDC



SAID in use. Operate transponders with altitude reporting mode and ADS-B (if equipped) enabled on all airport surfaces.

Ramp Frequency: 126.225

JANUARY 2020 ANNUAL RATE OF CHANGE 0.1° W

FIELD ELEV 542

88L

0.6% DOWN

175.1°

12250 X 150

0.3% UP

355.1°

ELEV 487

36L

0.3% UP

355.1°

9000 X 150

175.1°

ELEV 492

18L

0.3% UP

355.1°

ELEV 474

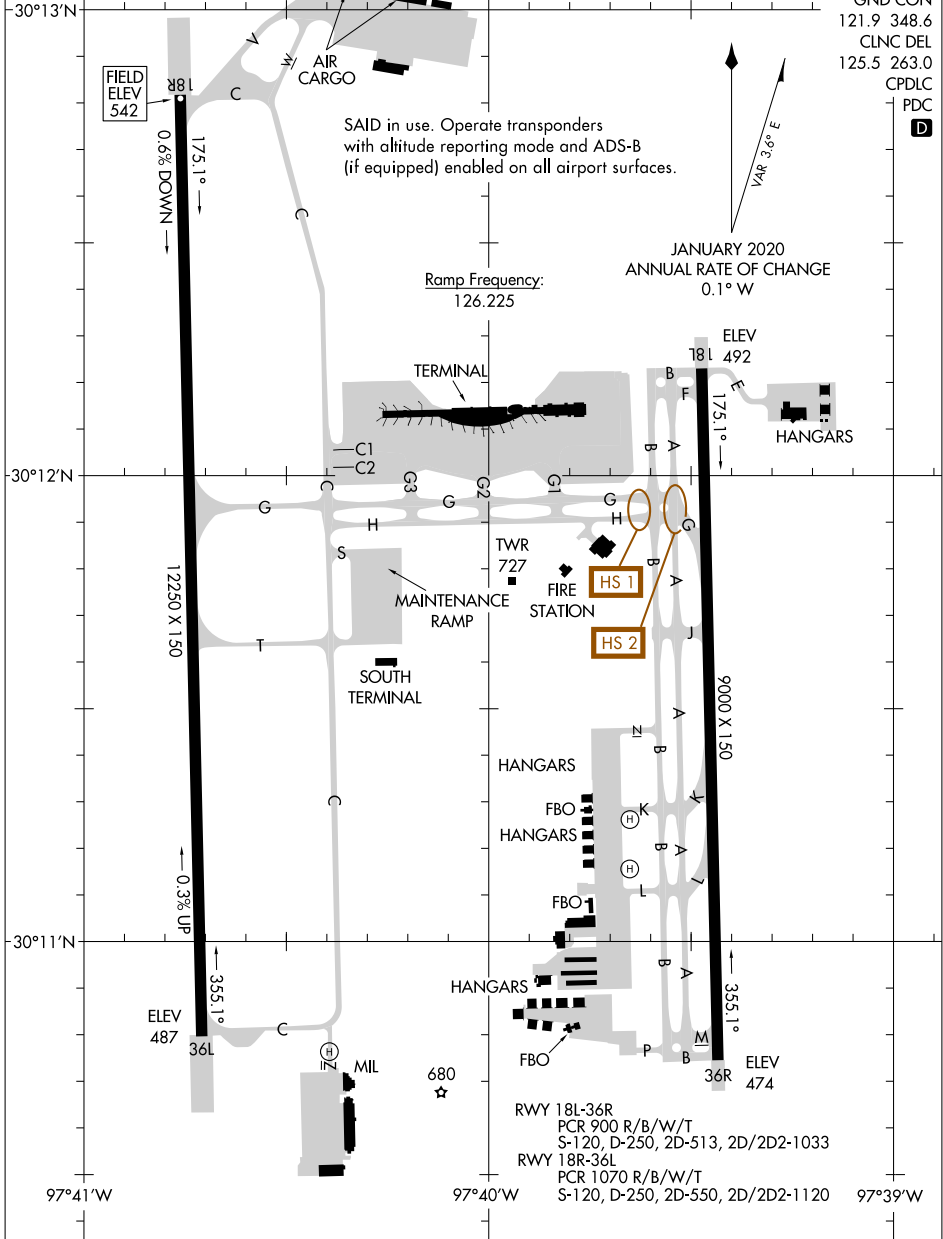
36R

0.3% UP

355.1°

ELEV 474

36R



AIRPORT DIAGRAM

AUSTIN-BERGSTROM INTL (AUS)

AUSTIN, TEXAS