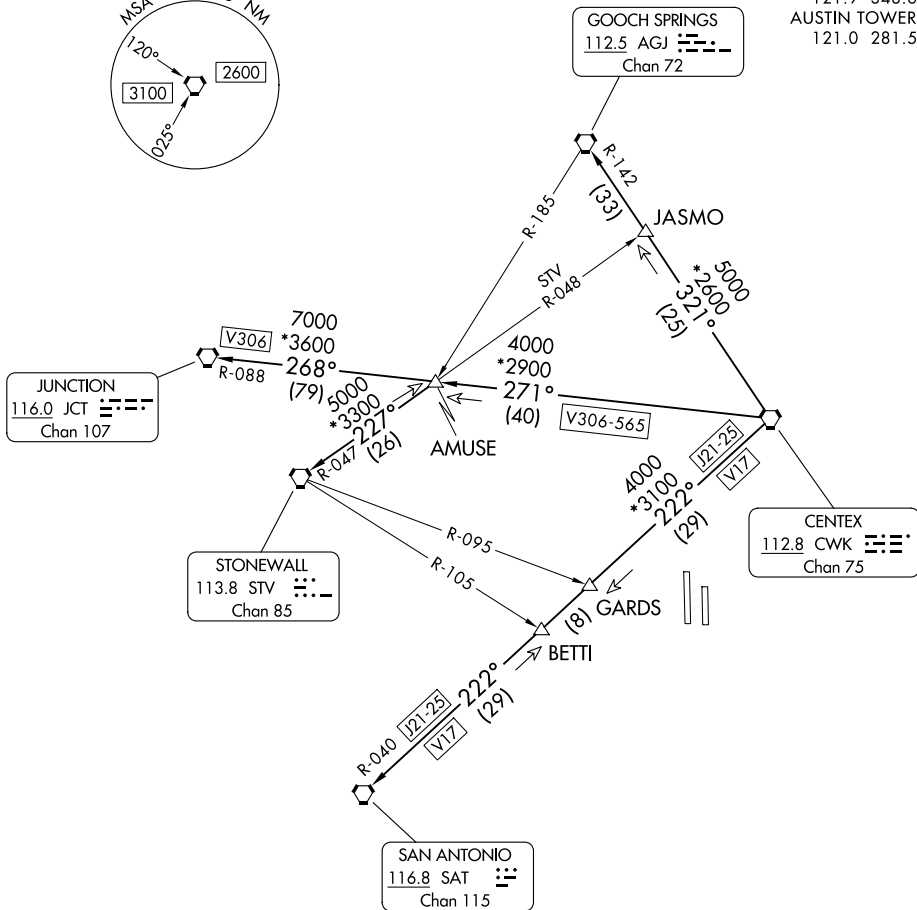
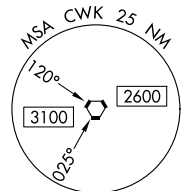


RADAR required.

**TOP ALTITUDE:  
ASSIGNED BY ATC**

AUSTIN DEP CON 119.0 370.85  
 D-ATIS 124.4  
 CLNC DEL 125.5 263.0  
 CPDLC  
 GND CON 121.9 348.6  
 AUSTIN TOWER 121.0 281.5



**TAKEOFF MINIMUMS**

Rwys 18L/R: Standard.

Rwys 36L/R: Standard with minimum climb of 240' per NM to 2600.

(CONTINUED ON FOLLOWING PAGE)

NOTE: Chart not to scale.

SC-3, 20 MAR 2025 to 17 APR 2025

SC-3, 20 MAR 2025 to 17 APR 2025



DEPARTURE ROUTE DESCRIPTION

TAKEOFF RUNWAYS 18L/R, 36L/R: Climb on assigned heading for vectors, then on assigned transition. Maintain ATC assigned altitude, expect filed altitude 10 minutes after departure.

GOOCH SPRINGS TRANSITION (AUS7.AGJ): From over CWK VORTAC on CWK R-321 and AGJ R-142 to AGJ VORTAC.

JUNCTION TRANSITION (AUS7.JCT): From over CWK VORTAC on CWK R-271 to AMUSE INT then on JCT R-088 to JCT VORTAC.

SAN ANTONIO TRANSITION (AUS7.SAT): From over CWK VORTAC on CWK R-222 and SAT R-040 to SAT VORTAC.

STONEWALL TRANSITION (AUS7.STV): From over CWK VORTAC on CWK R-271 to AMUSE INT then on STV R-047 to STV VORTAC.

SC-3, 20 MAR 2025 to 17 APR 2025

SC-3, 20 MAR 2025 to 17 APR 2025