

CENTEX EIGHT DEPARTURE

AL-556 (FAA)

AUSTIN-BERGSTROM INTL (AUS)

AUSTIN, TEXAS

D-ATIS
124.4
CLNC DEL
125.5 263.0
CPDLC
GND CON
121.9 348.6
AUSTIN TOWER
121.0 281.5
DEP CON
127.225 317.65

RADAR required.
DME required for ILEXY Transition.
DME required for CLL Transition.

**TOP ALTITUDE:
ASSIGNED BY ATC**

WACO
115.3 ACT
Chan 100

CEDAR CREEK
114.8 CQY
Chan 95

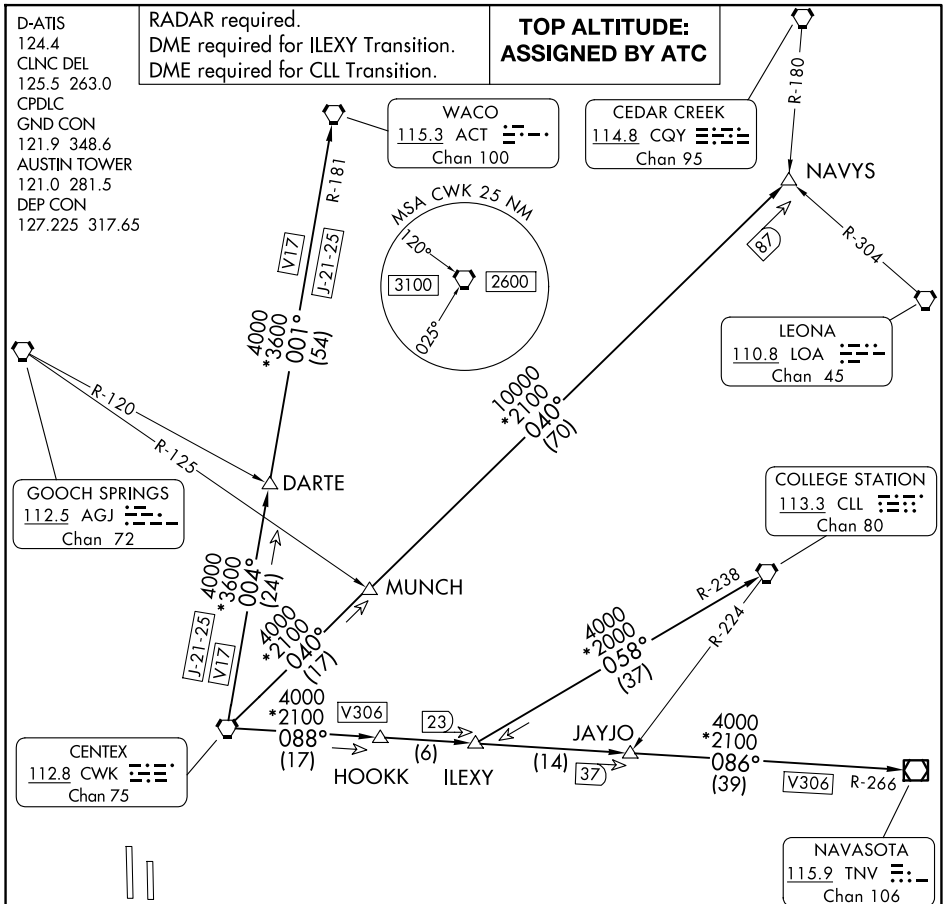
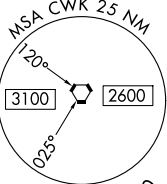
LEONA
110.8 LOA
Chan 45

COLLEGE STATION
113.3 CLL
Chan 80

GOOCH SPRINGS
112.5 AGJ
Chan 72

CENTEX
112.8 CWK
Chan 75

NAVASOTA
115.9 TNV
Chan 106



TAKEOFF MINIMUMS

Rwys 18L/R: Standard.

Rwys 36L/R: Standard with minimum climb of 240'/NM to 2600.

NOTE: COLLEGE STATION Transition for aircraft requesting 9000 MSL to FL230.

NOTE: ILEXY Transition for turboprop and turbojet aircraft landing HOU; for turbojet aircraft landing EFD, GLS, or LXB; for all aircraft landing IAH.

NOTE: JAYJO Transition for piston aircraft landing HOU; for piston and turboprop aircraft landing EFD, GLS or LXB; for all aircraft landing other west/south Houston terminal area airports.

NOTE: NAVYS Transition for aircraft destined to the Dallas/Fort Worth terminal area requesting FL230 and below. Do not file this transition if these conditions are not met.

NOTE: WACO Transition for aircraft requesting 12000' MSL and below.

(CONTINUED ON FOLLOWING PAGE)

NOTE: Chart not to scale.

CENTEX EIGHT DEPARTURE

AUSTIN, TEXAS

AUSTIN-BERGSTROM INTL (AUS)

SC-3, 20 MAR 2025 to 17 APR 2025

SC-3, 20 MAR 2025 to 17 APR 2025



DEPARTURE ROUTE DESCRIPTION

TAKEOFF RUNWAYS 18L/R, 36L/R: Climb on assigned heading for vectors, then on assigned transition. Maintain ATC assigned altitude, expect filed altitude 10 minutes after departure.

COLLEGE STATION TRANSITION (CWK8.CLL): From over CWK VORTAC on CWK R-088 to ILEXY, then on CLL R-238 to CLL VORTAC.

ILEXY TRANSITION (CWK8.ILEXY): From over CWK VORTAC on CWK R-088 to ILEXY.

JAYJO TRANSITION (CWK8.JAYJO): From over CWK VORTAC on CWK R-088 to JAYJO INT.

NAVASOTA TRANSITION (CWK8.TNV): From over CWK VORTAC on CWK R-088 and TNV R-266 to TNV VOR/DME.

NAVYS TRANSITION (CWK8.NAVYS): From over CWK VORTAC on CWK R-040 to NAVYS INT.

WACO TRANSITION (CWK8.ACT): From over CWK VORTAC on CWK R-004 and ACT R-181 to ACT VORTAC.

SC-3, 20 MAR 2025 to 17 APR 2025

SC-3, 20 MAR 2025 to 17 APR 2025