

LOC/DME I-GFQ 110.95 Chan 46(Y)	APP CRS 175°	Rwy Idg 12250 TDZE 542 Apt Elev 542
---	------------------------	--

ILS or LOC RWY 18R

AUSTIN-BERGSTROM INTL (AUS)

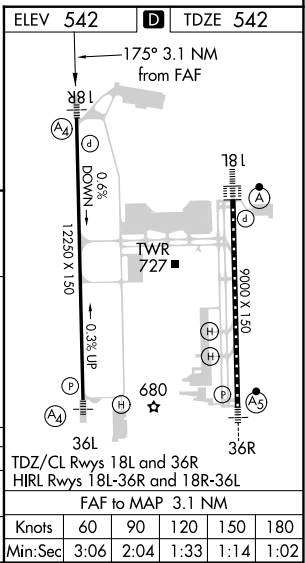
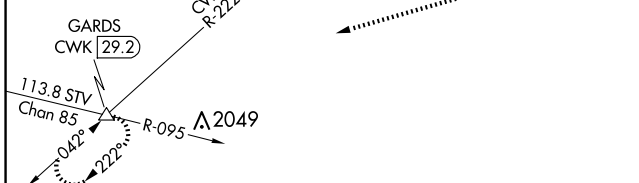
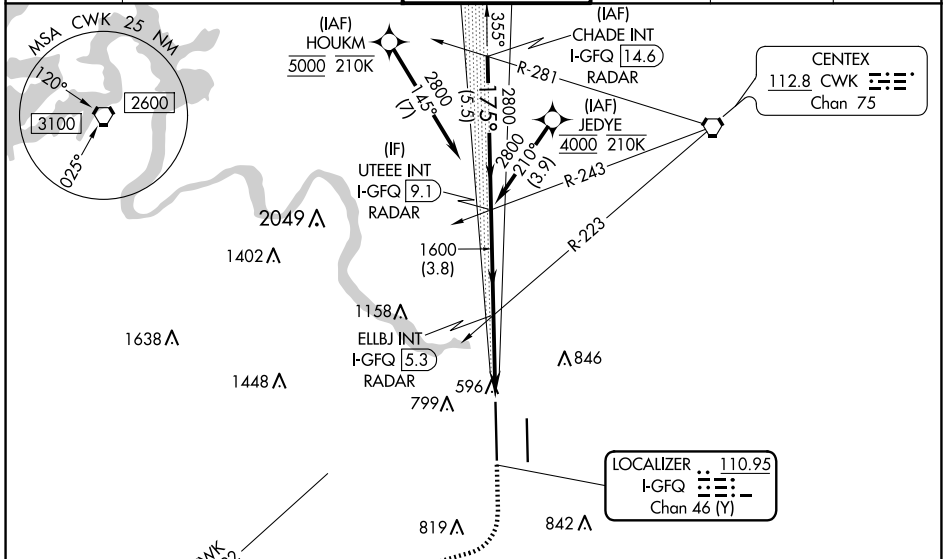
RNAV 1-GPS or RADAR required for procedure entry.
From HOUKM, JEDYE: RNAV 1-GPS required.

Simultaneous approach authorized. Inop table does not apply to S-ILS 18R. For inop ALS, increase S-LOC-18R Cats C, D and E visibility to RVR 4500.

MALS A_4 ---

MISSED APPROACH: Climb to 1000 then climbing right turn to 3500 on heading 250° and CWK VORTAC R-222 to GARDS INT/CWK 29.2 DME and hold.

D-ATIS 124.4	AUSTIN APP CON 127.225 317.65 (EAST) 120.875 270.25 (SOUTH) 119.0 370.85 (WEST)	AUSTIN TOWER 121.0 281.5	GND CON 121.9 348.6	CLNC DEL 125.5 263.0	CPDLC
------------------------	---	------------------------------------	-------------------------------	--------------------------------	-------



CHADE INT I-GFQ 14.6 RADAR	UTEEE INT I-GFQ 9.1 RADAR	ELLBJ INT I-GFQ 5.3 RADAR	I-GFQ 3	I-GFQ 2.2	GARDS
4000	2800	1600	1000	3500	CWK R-222
hdg 250°					
5.5 NM	3.8 NM	2.3 NM	0.8 NM		

CATEGORY	A	B	C	D	E
S-ILS 18R		742/40	200 (200-¾)		
S-LOC 18R		860/40	318 (400-¾)		

TDZ/CL Rwy 18L and 36R
HIRL Rwy 18L-36R and 18R-36L
FAF to MAP 3.1 NM

Knots	60	90	120	150	180
Min:Sec	3:06	2:04	1:33	1:14	1:02

SC-3, 20 MAR 2025 to 17 APR 2025

SC-3, 20 MAR 2025 to 17 APR 2025