

RNAV (RNP) Z RWY 18L

AUSTIN-BERGSTROM INTL (AUS)

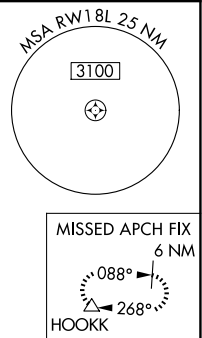
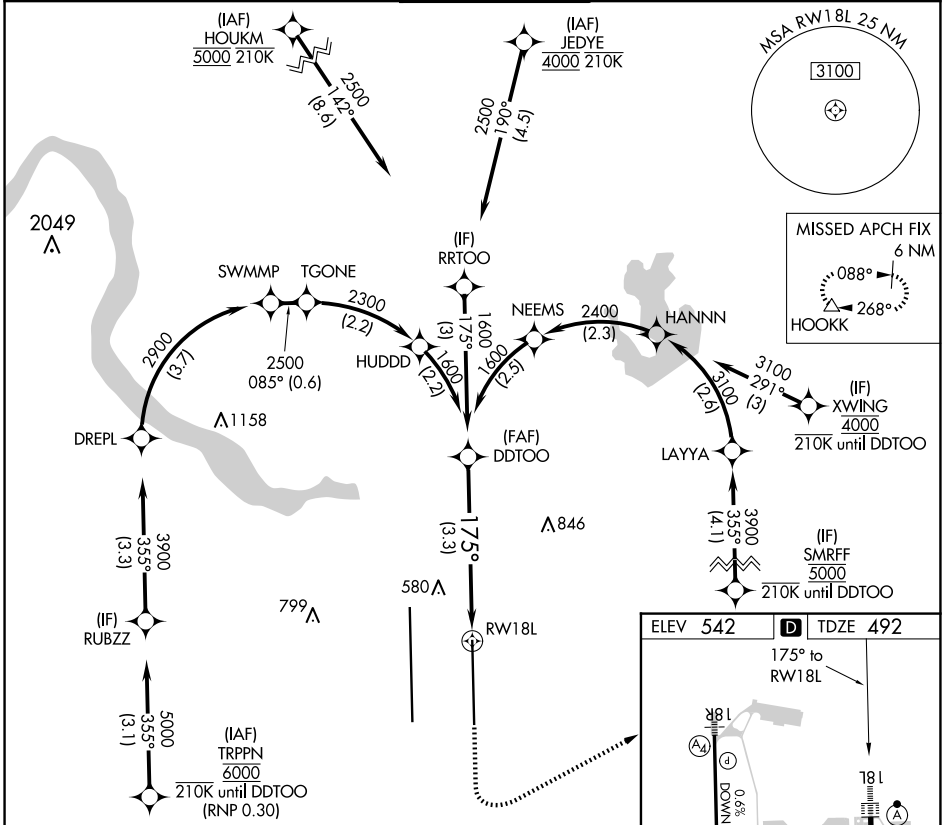
APP CRS 175°	Rwy Idg 9000
	TDZE 492
	Apt Elev 542

RADAR required. RNP AR APCH-GPS.

⚠ Simultaneous approach authorized. For uncompensated Baro-VNAV systems, procedure NA below -5°C or above 54°C.

ALSF-2
 MISSED APPROACH: Climb to 1000 then climbing left turn to 3000 direct HOOKK and hold.

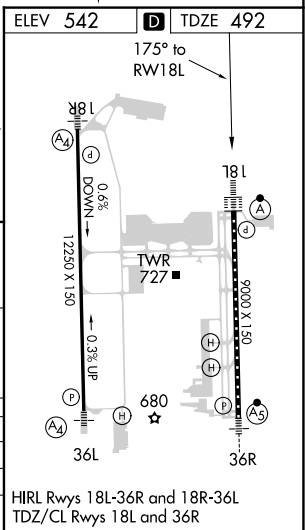
D-ATIS 124.4	AUSTIN APP CON 127.225 317.65 (EAST) 120.875 270.25 (SOUTH) 119.0 370.85 (WEST)	AUSTIN TOWER 121.0 281.5	GND CON 121.9 348.6	CLNC DEL 125.5 263.0	CPDLC
------------------------	---	------------------------------------	-------------------------------	--------------------------------	-------



SC-3, 20 MAR 2025 to 17 APR 2025

SC-3, 20 MAR 2025 to 17 APR 2025

DDTOO 1600	VGSI and RNAV glidepath not coincident (VGSI Angle 3.00/TCH 74).	1000	3000	HOOKK
GP 3.00° TCH 61	175°	↑	↙	△
See planview for multiple IF locations.				
3.3 NM				
CATEGORY	A	B	C	D
RNP 0.24 DA		825/26	333 (300-½)	
RNP 0.30 DA		885/35	393 (400-⅙)	



AUTHORIZATION REQUIRED

HIRL Rwy 18L-36R and 18R-36L
TDZ/CL Rwy 18L and 36R