

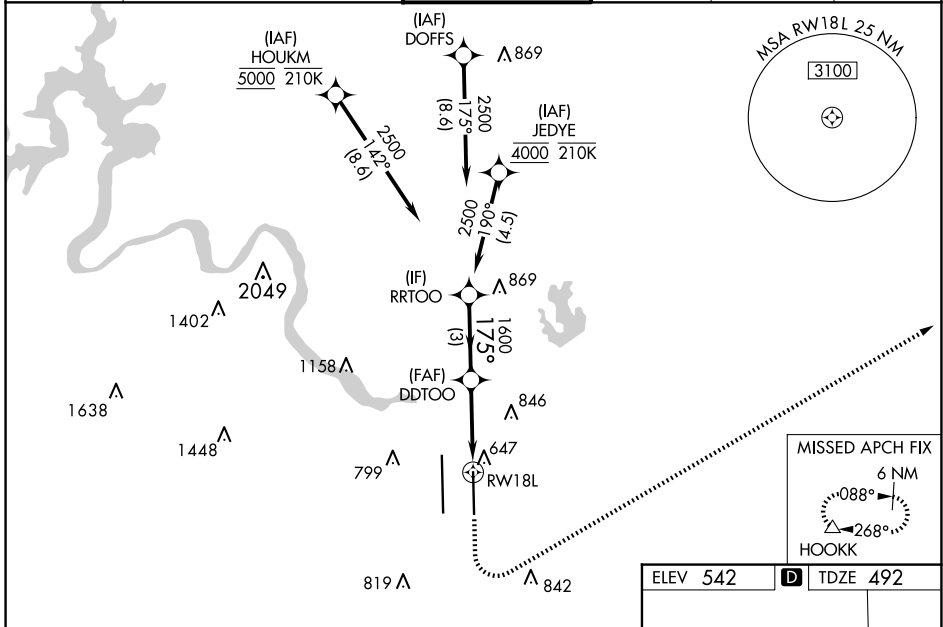
WAAS CH <b>62829</b> <b>W18A</b>	APP CRS <b>175°</b>	Rwy Idg TDZE <b>492</b> Apt Elev <b>542</b>	<b>9000</b>
--	------------------------	---	-------------

# RNAV (GPS) Y RWY 18L

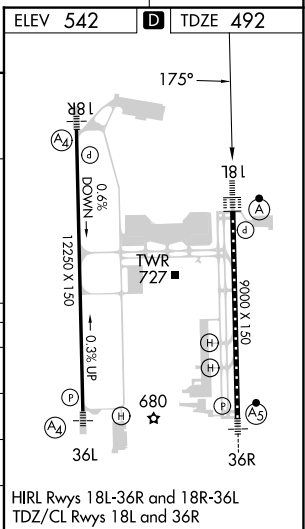
AUSTIN-BERGSTROM INTL (AUS)

RNP APCH-GPS.	ALSF-2 	MISSED APPROACH: Climb to 1000 then climbing left turn to 3000 direct HOOKK and hold.
Simultaneous approach authorized. LNAV procedure NA during simultaneous operations. For uncompensated Baro-VNAV systems, LNAV/VNAV NA below -5°C or above 54°C. Use of FD or AP required during simultaneous operations. For inop ALS, increase LPV Cat E visibility to RVR 4000, LNAV/VNAV visibility all Cats to RVR 6000, and LNAV visibility Cats C, D, and E to RVR 6000.		

D-ATIS <b>124.4</b>	AUSTIN APP CON <b>127.225 317.65</b> (EAST) <b>120.875 270.25</b> (SOUTH) <b>119.0 370.85</b> (WEST)	AUSTIN TOWER <b>121.0 281.5</b>	GND CON <b>121.9 348.6</b>	CLNC DEL <b>125.5 263.0</b>	CPDLC
------------------------	---	------------------------------------	-------------------------------	--------------------------------	-------



RRTOO VGSi and RNAV glidepath not coincident (VGSi Angle 3.00/TCH 74). GP 3.00° TCH 61 2500 175° 1600 3 NM 2.2 NM 1.1 NM RWY 18L	1000	3000	HOOKK		
	DDTOO 1600 1.1 NM to RWY 18L				
CATEGORY	A	B	C	D	E
LPV DA	692/18		200 (200-½)		
LNAV/VNAV DA	906/40		414 (400-¾)		
LNAV MDA	900/24	408 (400-½)	900/40		408 (400-¾)
CIRCLING	1040-1 498 (500-1)	1120-1 578 (600-1)	1200-1¾ 658 (700-1¾)	1200-2 658 (700-2)	NA



SC-3, 20 MAR 2025 to 17 APR 2025

SC-3, 20 MAR 2025 to 17 APR 2025