

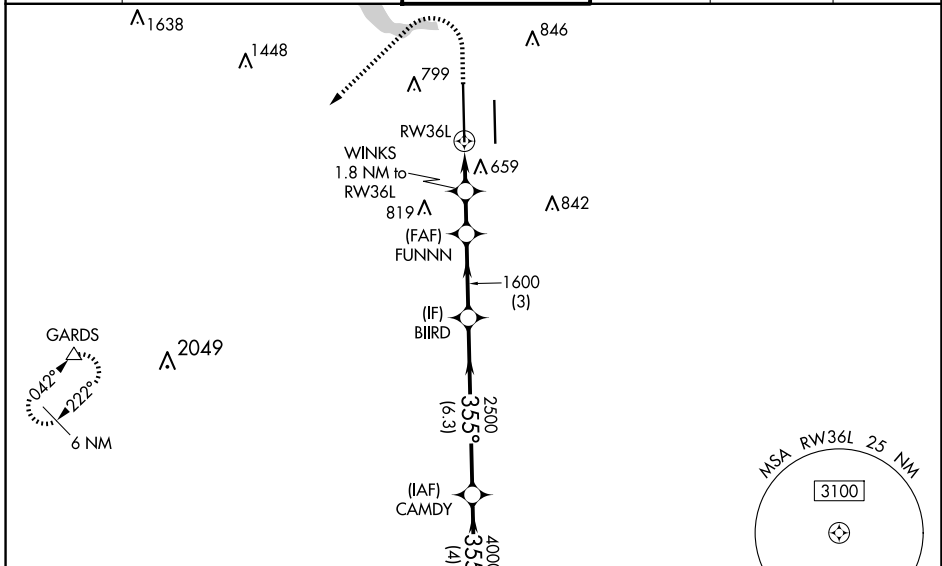
WAAS CH 90229 W36A	APP CRS 355°	Rwy Idg 12250 TDZE 496 Apt Elev 542
--	------------------------	--

RNAV (GPS) Y RWY 36L

AUSTIN-BERGSTROM INTL (AUS)

RNP APCH-GPS.		MALS ④	MISSED APPROACH: Climb to 1700 then climbing left turn to 3500 direct GARDS and hold.
▼ Simultaneous approach authorized. Use of FD or AP required during simultaneous operations. LNAV procedure NA during simultaneous operations. For uncompensated Baro-VNAV systems, LNAV/VNAV NA below -5°C or above 54°C. Inop table does not apply to LPV all Cats. For inop ALS, increase LNAV/VNAV Cat E visibility to 1½ SM, LNAV Cat E visibility to 1¼ SM.			

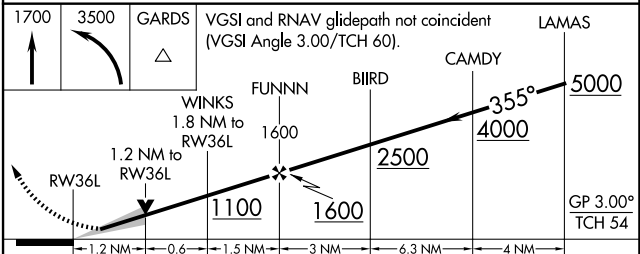
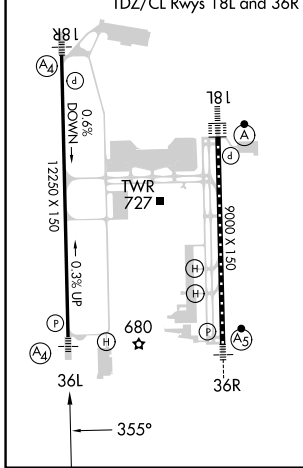
D-ATIS 124.4	AUSTIN APP CON 127.225 317.65 (EAST) 120.875 270.25 (SOUTH) 119.0 370.85 (WEST)	AUSTIN TOWER 121.0 281.5	GND CON 121.9 348.6	CLNC DEL 125.5 263.0	CPDLC
------------------------	---	------------------------------------	-------------------------------	--------------------------------	-------



SC-3, 20 MAR 2025 to 17 APR 2025

SC-3, 20 MAR 2025 to 17 APR 2025

ELEV 542	D TDZE 496
HIRL Rwy 18L-36R and 18R-36L TDZ/CL Rwy 18L and 36R	



CATEGORY	A	B	C	D	E
LPV DA		696/40	200 (200-¾)		
LNAV/VNAV DA		970/60	474 (500-1¼)		
LNAV MDA	920/40	424 (400-¾)	920/50	424 (400-1)	
C CIRCLING	1040-1 498 (500-1)	1120-1 578 (600-1)	1200-1¾ 658 (700-1¾)	1200-2 658 (700-2)	NA