

CAMP SPRINGS, MARYLAND

# ILS or LOC RWY 19R

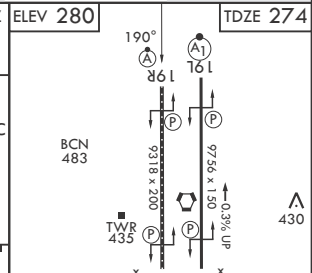
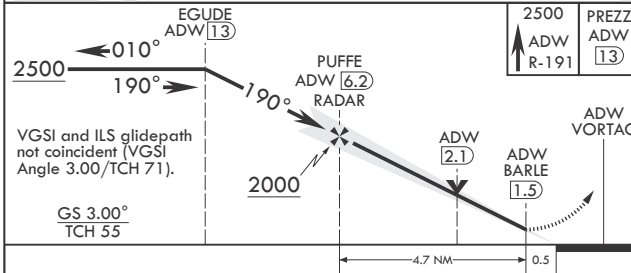
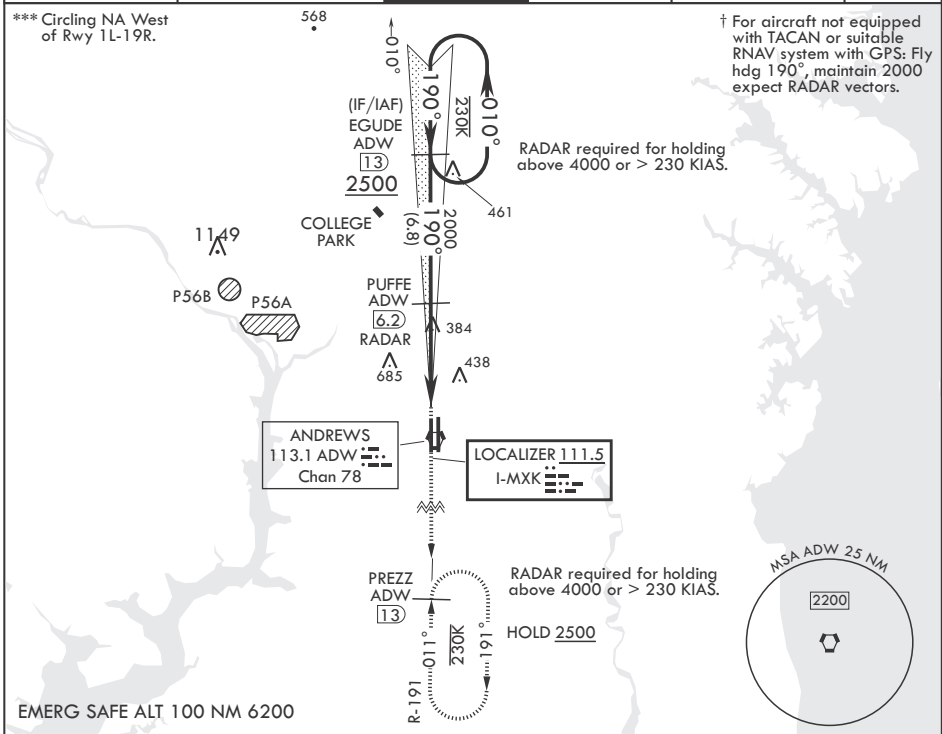
LOC I-MXK <b>111.5</b>	APCH CRS <b>190°</b>	Rwy Idg TDZE Arprt Elev	<b>9318</b> <b>274</b> <b>280</b>
---------------------------	-------------------------	-------------------------------	---

(USAF)

JOINT BASE ANDREWS (ANDREWS AFB) (KADW)

RADAR or DME required		ALS-2	† MISSED APPROACH: Climb to 2500, intercept ADW VORTAC R-191 to PREZZ and hold.
▼ * When ALS inop, increase RVR to 40, vis to 3/4 mile. When TDZL/CL inop, increase RVR to 24. ** When ALS inop, increase CAT AB RVR to 55, vis to 1 mile, CAT CDE RVR to 60, vis to 1 1/8 miles.			

ATIS <b>133.675 251.05</b>	POTOMAC APP CON <b>128.0 335.5</b>	TOWER <b>118.4 349.0</b>	GND CON <b>121.8 275.8</b>	CLNC DEL <b>127.55 285.475</b>	CPDLC
-------------------------------	---------------------------------------	-----------------------------	-------------------------------	-----------------------------------	-------



CATEGORY	A	B	C	D	E
S-ILS 19R*	474/18		200	(200-1/2)	
S-LOC 19R**	660/24	386 (400-1/2)	660/35	386 (400-3/4)	
☐ CIRCLING***	780-1	500 (500-1)	780-1 1/2 500 (500-1 1/2)	840-2 560 (600-2)	

HIRL all Rwys TDZL/CL Rwys 1L, 19R					
FAF to MAP 4.7 NM					
Knots	60	90	120	150	180
Min:Sec	4:42	3:08	2:21	1:53	1:34

CAMP SPRINGS, MARYLAND

38°49'N - 76°52'W JOINT BASE ANDREWS (ANDREWS AFB) (KADW)

Amdt 4 06OCT22

# ILS or LOC RWY 19R

NE-3, 20 MAR 2025 to 17 APR 2025

NE-3, 20 MAR 2025 to 17 APR 2025