

CAMP SPRINGS, MARYLAND

# ILS or LOC RWY 1L

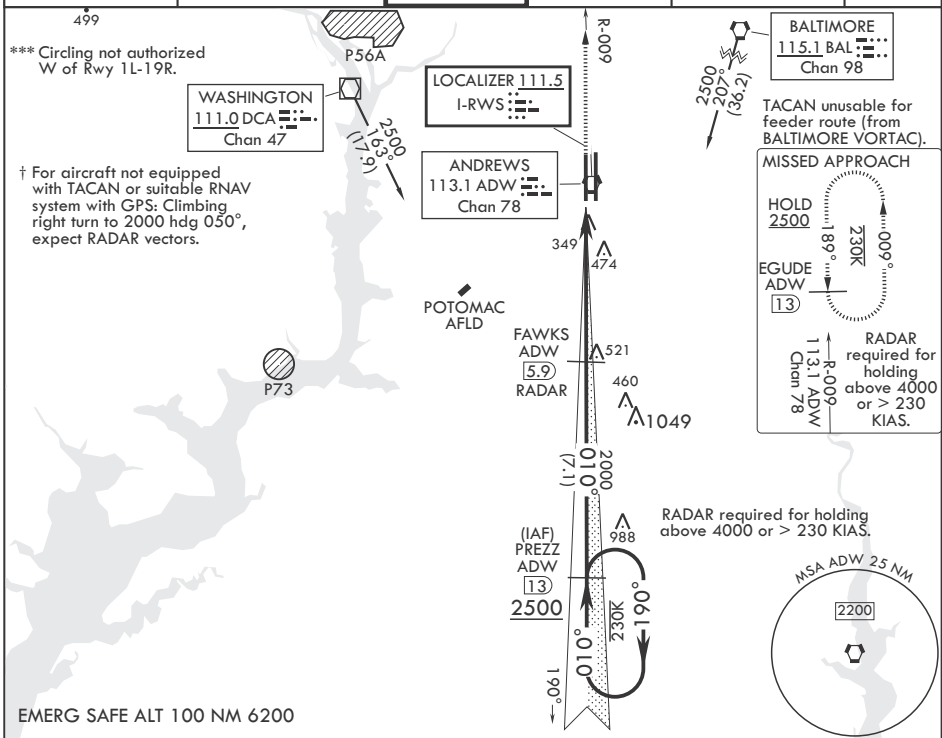
LOC I-RWS <b>111.5</b>	APCH CRS <b>010°</b>	Rwy Idg TDZE Arprt Elev	<b>9318</b> <b>261</b> <b>280</b>
---------------------------	-------------------------	-------------------------------	---

-(USAF)

JOINT BASE ANDREWS (ANDREWS AFB) (KADW)

RADAR or DME required		ALSIF-2	† MISSED APPROACH: Climbing to 2500, intercept ADW VORTAC R-009 to EGUDE and hold.
* When ALS inop increase RVR to 40, vis to 3/4 mile. When TDZL/CL inop, increase RVR to 24. ** When ALS inop, increase CAT AB RVR to 55, vis to 1 mile, CAT CDE RVR to 60, vis to 1 1/8 miles.			

ATIS <b>133.675 251.05</b>	POTOMAC APP CON <b>128.0 335.5</b>	TOWER <b>118.4 349.0</b>	GND CON <b>121.8 275.8</b>	CLNC DEL <b>127.55 285.475</b>	CPDLC
-------------------------------	---------------------------------------	-----------------------------	-------------------------------	-----------------------------------	-------



NE-3, 20 MAR 2025 to 17 APR 2025

NE-3, 20 MAR 2025 to 17 APR 2025

2500 ADW R-009 EGUDE ADW 13 ELEV 280 TDZE 261		PREZZ ADW 13 2500 ← 190° 010° → FAWKS ADW 5.9 RADAR 2000 VGS1 and ILS glidepath not coincident (VGS1 Angle 3.00/TCH 72). GS 3.00° TCH 55 5.1 NM 0.2		BCN 483 TW R 435 9318 x 200 9726 x 150 0.3% UP 1L 1R x A1	
CATEGORY	A	B	C	D	E
S-ILS 1L*	461/18		200	(200-½)	
S-LOC 1L**	680/24	419 (400-½)	680/40	419	(400-¾)
☐ CIRCLING***	780-1 500 (500-1)		780-1½ 500 (500-1½)	840-2 560 (600-2)	
HIRL all Rwsy TDZL/CL Rwsy 1L, 19R 010° FAF to MAP 5.1 NM Knots: 60 90 120 150 180 Min:Sec: 5:06 3:24 2:33 2:02 1:42					

CAMP SPRINGS, MARYLAND

38°49'N - 76°52'W JOINT BASE ANDREWS (ANDREWS AFB) (KADW)

Amdt 7 06OCT22

# ILS or LOC RWY 1L