

CAMP SPRINGS, MARYLAND

ILS or LOC RWY 1R

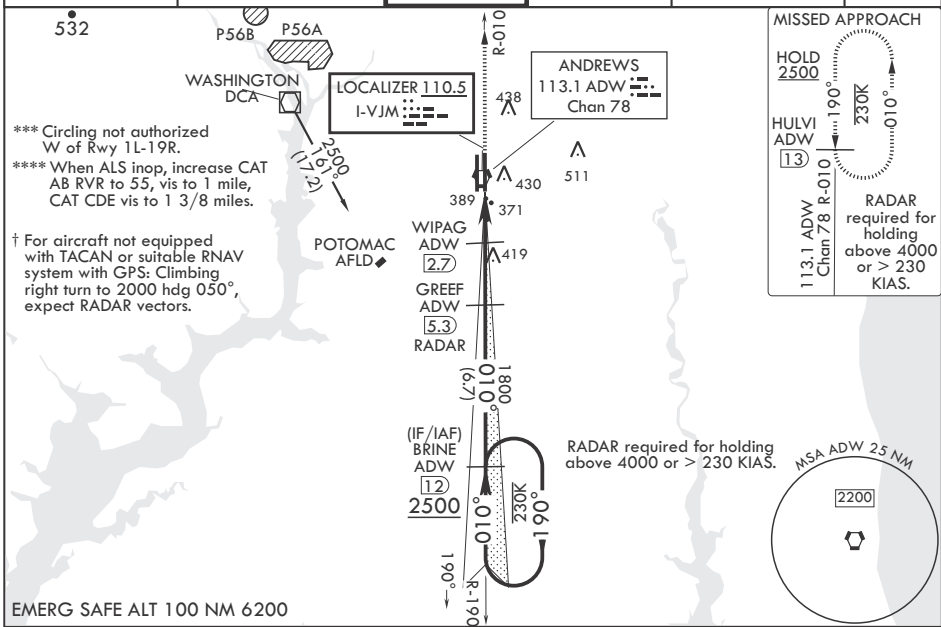
LOC I-VJM 110.5	APCH CRS 010°	Rwy ldg TDZE 265 Arprt Elev 280
---------------------------	-------------------------	--

-(USAF)

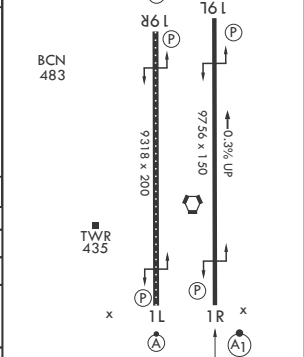
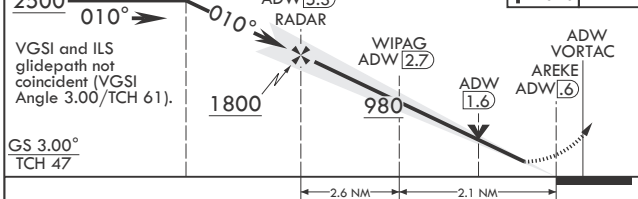
JOINT BASE ANDREWS (ANDREWS AFB) (KADW)

RADAR required RADAR or DME required at FAF		ALSIF-1 	† MISSED APPROACH: Climb to 2500 via ADW VORTAC R-010 to HULVI/ADW 13 DME and hold.
* When ALS inop, increase RVR to 40, vis to 3/4 mile. RVR 18 authorized with use of Flight Director System or Autopilot System or Heads-Up-Display to DA. ** When ALS inop, increase RVR to 55, vis to 1 mile.			

ATIS 133.675 251.05	POTOMAC APP CON 128.0 335.5	TOWER 118.4 349.0	GND CON 121.8 275.8	CLNC DEL 127.55 285.475	CPDLC
-------------------------------	---------------------------------------	-----------------------------	-------------------------------	-----------------------------------	-------



EMERG SAFE ALT 100 NM 6200	2500 ADW R-010	HULVI ADW 13	ELEV 280	TDZE 265
----------------------------	----------------------	--------------------	----------	----------



CATEGORY	A	B	C	D	E
S-ILS 1R*	465/24 200 (200-½)				
S-LOC 1R**	640/24	375 (400-½)	640/35	375	(400-¾)
C CIRCLING***	780-1	500 (500-1)	780-1½ 500 (500-1½)	840-2	560 (600-2)
NON-DME					
S-LOC 1R****	720/24	455 (500-½)	720/45	455	(500-¾)
C CIRCLING***	780-1	500 (500-1)	780-1½ 500 (500-1½)	840-2	560 (600-2)

HIRL all Rwys TDZL/CL Rwys 1L, 19R					
FAF to MAP 4.7 NM					
Knots	60	90	120	150	180
Min:Sec	4:42	3:08	2:21	1:53	1:34

CAMP SPRINGS, MARYLAND

38°49'N - 76°52'W JOINT BASE ANDREWS (ANDREWS AFB) (KADW)

Amdt 1 18MAY23

ILS or LOC RWY 1R

NE-3, 20 MAR 2025 to 17 APR 2025

NE-3, 20 MAR 2025 to 17 APR 2025