

25051

JEFSN TWO DEPARTURE (RNAV) (JEFSN2.JEFSN)

JOINT BASE ANDREWS (ANDREWS AFB) (KADW)
CAMP SPRINGS, MARYLAND

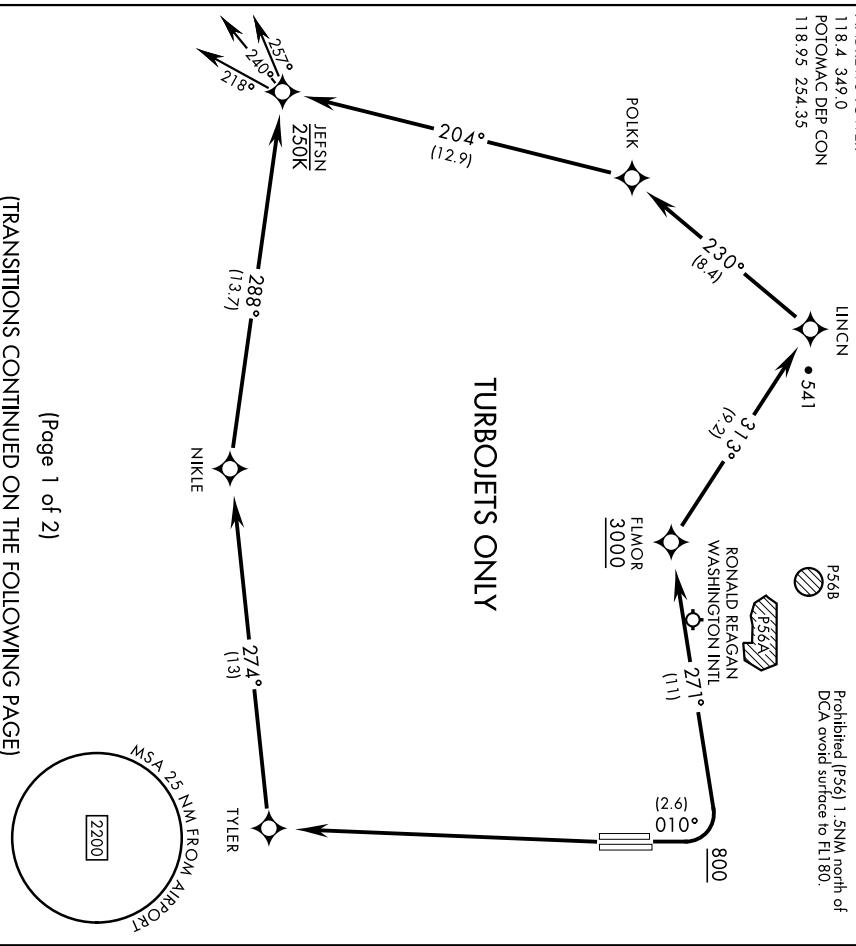
ATIS 133.675 251.05

CPDLC
GND CON 121.8 275.8
ANDREWS TOWER 118.4 349.0
POTOMAC DEP CON 118.95 254.35

RNAV1-GPS [USAF]
RADAR required

TOP ALTITUDE:
3000

Max 250 KIAS until JEFSN
Prohibited (P56) 1.5NM north of
DCA avoid surface to FL80.



(Page 1 of 2)

(TRANSITIONS CONTINUED ON THE FOLLOWING PAGE)

DEPARTURE ROUTE DESCRIPTION

▶ **TAKEOFF RWY 1L/R:** Climb on heading 010° to 800, then climbing left turn to 3000 direct FLMOR. Then via depicted route to JEFSN, thence...

TAKEOFF RWY 19L/R: Climb direct TYLER then via depicted route to JEFSN, thence...

... on assigned transition. Maintain 3000, expect further clearance to filed alt within ten (10) minutes after departure.

- FLASK TRANSITION (JEFSN2.FLASK)
- GLANC TRANSITION (JEFSN2.GLANC)
- MAULS TRANSITION (JEFSN2.MAULS)
- MELTN TRANSITION (JEFSN2.MELTN)
- RRSIN TRANSITION (JEFSN2.RRSIN)

JEFSN TWO DEPARTURE (RNAV) (JEFSN2.JEFSN)

Orig 31OCT24

CAMP SPRINGS, MARYLAND
JOINT BASE ANDREWS (ANDREWS AFB) (KADW)

25051

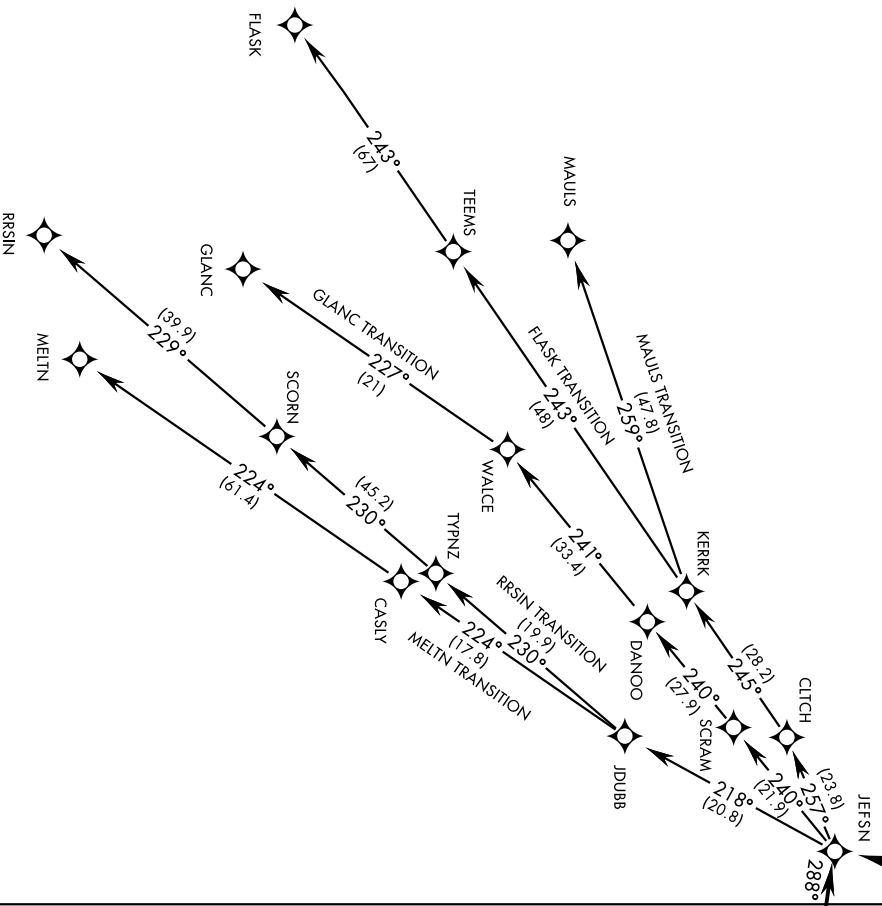
JEFSN TWO DEPARTURE (RNAV) (JEFSN2.JEFSN)

JOINT BASE ANDREWS (ANDREWS AFB) (KADW)
CAMP SPRINGS, MARYLAND

TOP ALTITUDE: 3000

RNAV1-GPS
RADAR required

[USAF]



NE-3, 20 MAR 2025 to 17 APR 2025

NE-3, 20 MAR 2025 to 17 APR 2025

(Page 2 of 2)

NOTE: Chart not to scale

TURBOJET ONLY

JEFSN TWO DEPARTURE (RNAV) (JEFSN2.JEFSN)

Orig: 31OCT24

CAMP SPRINGS, MARYLAND
JOINT BASE ANDREWS (ANDREWS AFB) (KADW)