

# LINCN TWO DEPARTURE (RNAV) (LINCN2.LINCN)

ATIS 133.675 251.05  
 CPDLC  
 GND CON  
 121.8 275.8  
 ANDREWS TOWER  
 118.4 349.0  
 POTOMAC DEP CON  
 118.95 254.35

RNAV1-GPS  
 RADAR required

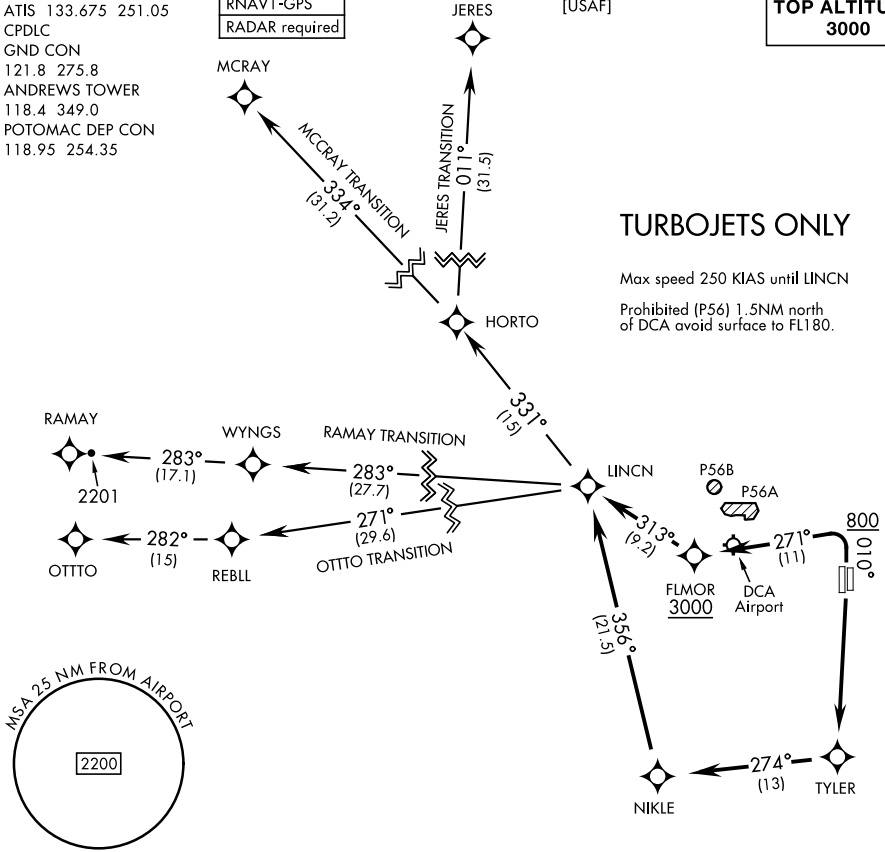
[USAF]

**TOP ALTITUDE:  
 3000**

## TURBOJET ONLY

Max speed 250 KIAS until LINCN

Prohibited (P56) 1.5NM north of DCA avoid surface to FL180.



NE-3, 20 MAR 2025 to 17 APR 2025

NE-3, 20 MAR 2025 to 17 APR 2025

### DEPARTURE ROUTE DESCRIPTION

TAKEOFF RWY 01L/R: Climb heading 010° to 800, then climbing left turn to 3000 direct FLMOR. Then via depicted route to LINCN, thence...

TAKEOFF RWY 19L/R: Climb direct TYLER then via depicted route to LINCN, thence...

...on assigned transition. Maintain 3000, expect further clearance to filed alt within ten (10) minutes after departure.

JERES TRANSITION (LINCN2.JERES)

MCCRAY TRANSITION (LINCN2.MCRAY)

OTTO TRANSITION (LINCN2.OTTO)

RAMAY TRANSITION (LINCN2.RAMAY)

# LINCN TWO DEPARTURE (RNAV) (LINCN2.LINCN)