

CAMP SPRINGS, MARYLAND

# RNAV (GPS) RWY 19L

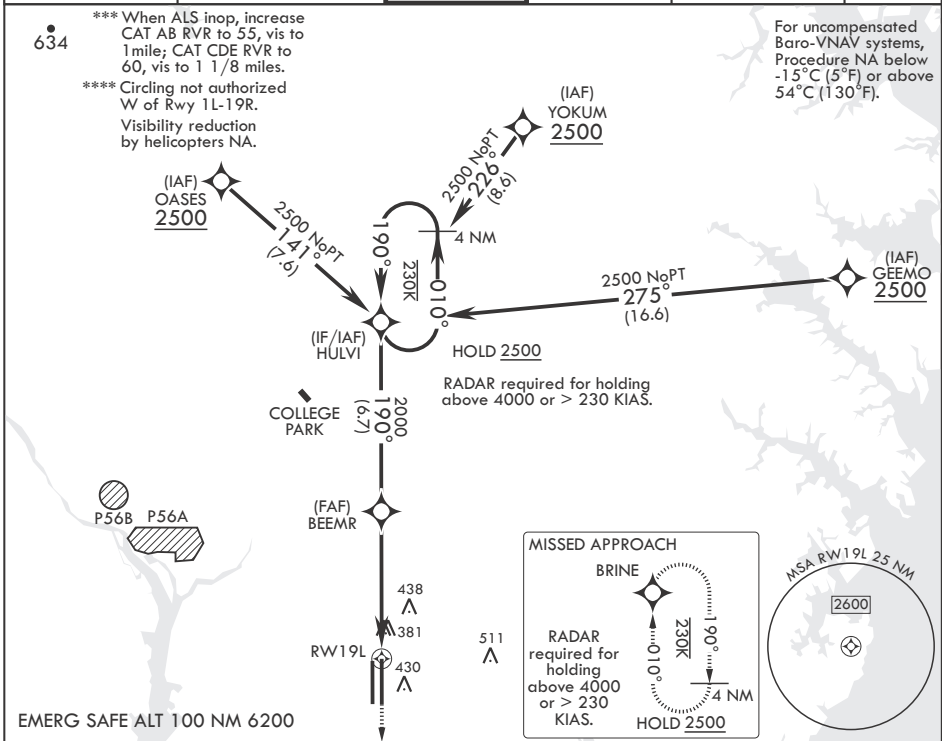
WAAS CH 52203 W19A	APCH CRS 190°	Rwy ldg TDZE Arprt Elev	9756 279 280
--------------------------	------------------	-------------------------------	--------------------

- (USAF)

JOINT BASE ANDREWS (ANDREWS AFB) (KADW)

DME/DME RNP-0.3 NA		ALSF-1	MISSED APPROACH: Climb to 2500 direct BRINE and hold.		
<p>▼ * When ALS inop, increase RVR to 40, vis to 3/4 mile. ** When ALS inop, increase RVR to 60, vis to 1 1/8 miles.</p>					

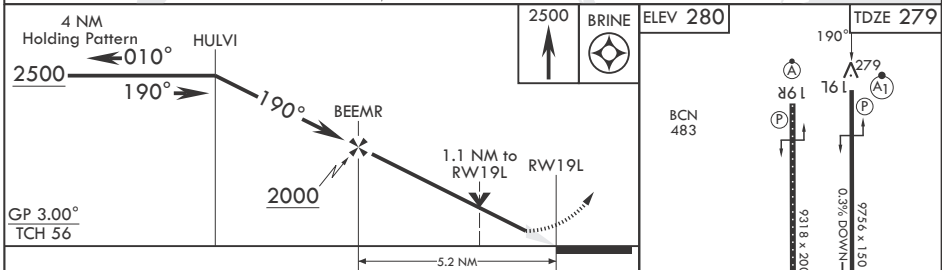
ATIS 133.675 251.05	POTOMAC APP CON 128.0 335.5	TOWER 118.4 349.0	GND CON 121.8 275.8	CLNC DEL 127.55 285.475	CPDLC
------------------------	--------------------------------	----------------------	------------------------	----------------------------	-------



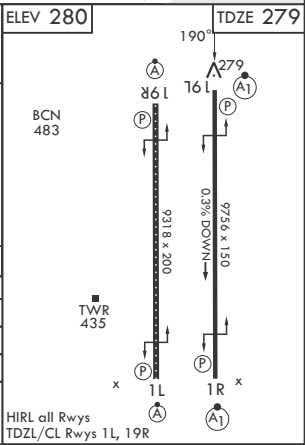
NE-3, 20 MAR 2025 to 17 APR 2025

NE-3, 20 MAR 2025 to 17 APR 2025

EMERG SAFE ALT 100 NM 6200



CATEGORY	A	B	C	D	E
LPV DA*	479/24		200	(200-1/2)	
LNAV/VNAV DA**	680/40		401	(400-3/4)	
LNAV MDA***	680/24	401 (400-1/2)	680/40	401	(400-3/4)
<b>C</b> CIRCLING****	780-1	500 (500-1)	780-1 1/2 500 (500-1 1/2)	840-2	560 (600-2)



CAMP SPRINGS, MARYLAND 38°49'N - 76°52'W JOINT BASE ANDREWS (ANDREWS AFB) (KADW)

Amdt 1 18MAY23

# RNAV (GPS) RWY 19L