

CAMP SPRINGS, MARYLAND

RNAV (GPS) RWY 19R

-(USAF)

JOINT BASE ANDREWS (ANDREWS AFB) (KADW)

WAAS CH 52204 W19B	APCH CRS 190°	Rwy ldg 9318
		TDZE 274
		Arprt Elev 280

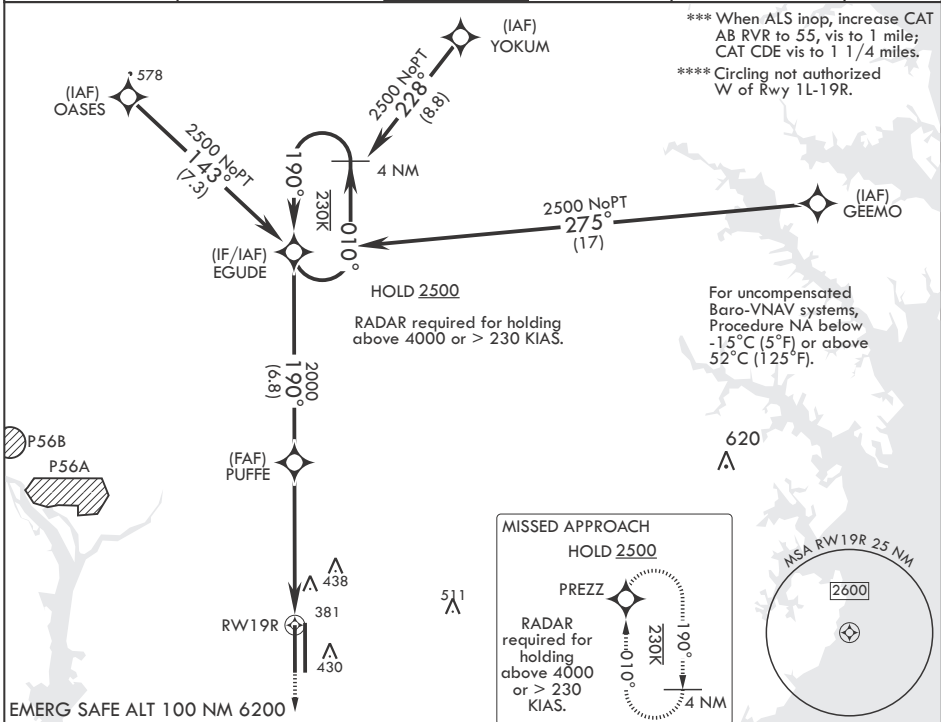
DME/DME RNP-0.3 NA

ALS-F-2

MISSED APPROACH: Climb to 2500 direct PREZZ and hold.

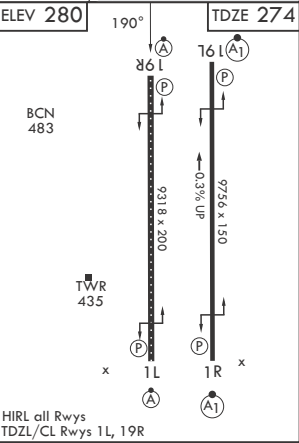
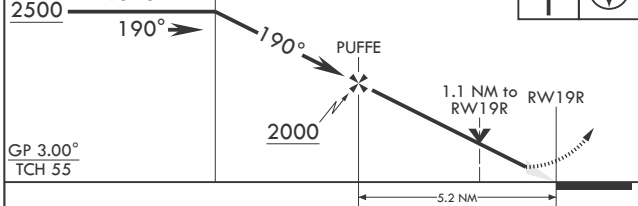
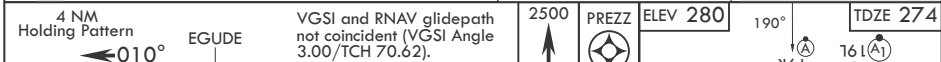
▼ * When ALS inop, increase RVR to 40, vis to 3/4.
When TDZ/CL lights inop, increase RVR to 24.
** When ALS inop, increase vis to 1 1/4 miles.

ATIS 133.675 251.05	POTOMAC APP CON 128.0 335.5	TOWER 118.4 349.0	GND CON 121.8 275.8	CLNC DEL 127.55 285.475	CPDLC
------------------------	--------------------------------	----------------------	------------------------	----------------------------	-------



NE-3, 20 MAR 2025 to 17 APR 2025

NE-3, 20 MAR 2025 to 17 APR 2025



CATEGORY	A	B	C	D	E
LPV DA*		474/18	200		(200-1/2)
LNAV/VNAV DA**		697/40	423		(500-3/4)
LNAV MDA***	700/24	426 (500-1/2)	700/40	426	(500-3/4)
☐ CIRCLING****	780-1	500 (500-1)	780-1 1/2 500 (500-1 1/2)	840-2	560 (600-2)

HIRL all Rwys
TDZL/CL Rwys 1L, 19R

CAMP SPRINGS, MARYLAND

38°49'N - 76°52'W JOINT BASE ANDREWS (ANDREWS AFB) (KADW)

Amdt 1 18MAY23

RNAV (GPS) RWY 19R