

CAMP SPRINGS, MARYLAND

# RNAV (GPS) RWY 1R

WAAS CH <b>52206</b> W01B	APCH CRS <b>010°</b>	Rwy ldg TDZE <b>265</b> Arprt Elev <b>280</b>
---------------------------------	-------------------------	---

-(USAF)

JOINT BASE ANDREWS (ANDREWS AFB) (KADW)

DME/DME RNP-0.3 NA

ALSF-1

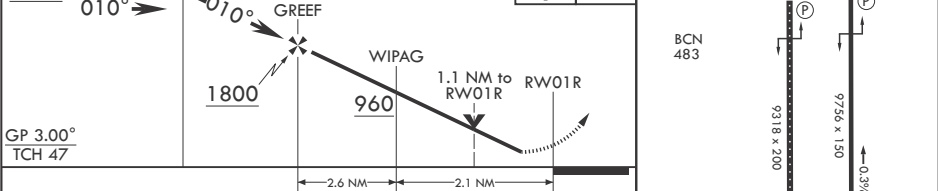
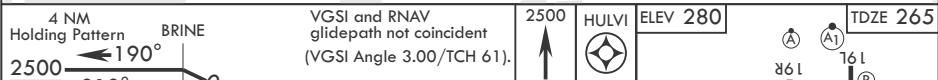
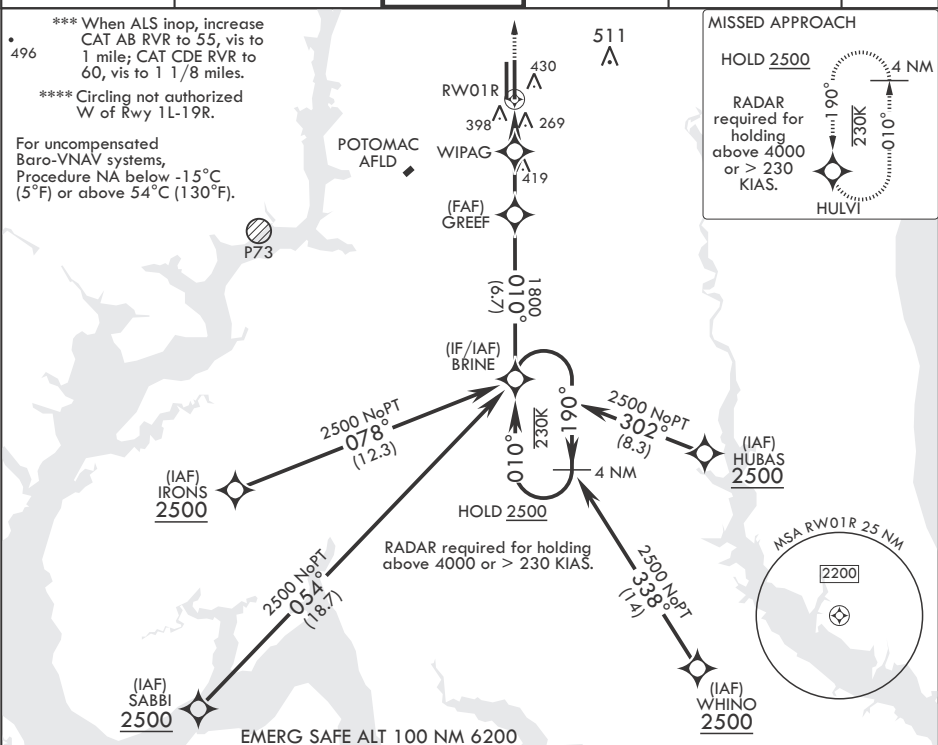
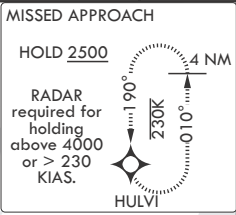
MISSED APPROACH: Climb to 2500 direct HULVI and hold.

▼ \* When ALS inop increase RVR to 40, vis to 3/4 mile.  
 \*\* When ALS inop, increase RVR to 60, vis to 1 1/8 miles.

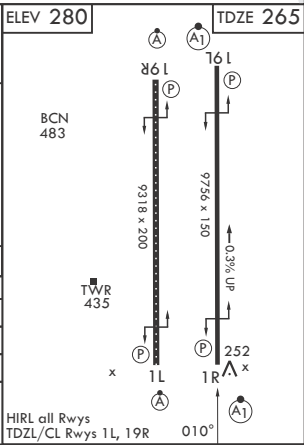
ATIS <b>133.675 251.05</b>	POTOMAC APP CON <b>128.0 335.5</b>	TOWER <b>118.4 349.0</b>	GND CON <b>121.8 275.8</b>	CLNC DEL <b>127.55 285.475</b>	CPDLC
-------------------------------	---------------------------------------	-----------------------------	-------------------------------	-----------------------------------	-------

\*\*\* When ALS inop, increase CAT AB RVR to 55, vis to 1 mile; CAT CDE RVR to 60, vis to 1 1/8 miles.  
 \*\*\*\* Circling not authorized W of Rwy 1L-19R.

For uncompensated Baro-VNAV systems, Procedure NA below -15°C (5°F) or above 54°C (130°F).



CATEGORY	A	B	C	D	E
LPV DA*		465/24	200	(200-1/2)	
LNAV/VNAV DA**		660/35	395	(400-3/4)	
LNAV MDA***	660/24	395 (400-1/2)	660/35	395 (400-3/4)	
<b>C</b> CIRCLING****	780-1	500 (500-1)	780-1 1/2 500 (500-1 1/2)	840-2	560 (600-2)



CAMP SPRINGS, MARYLAND

38°49'N - 76°52'W JOINT BASE ANDREWS (ANDREWS AFB) (KADW)

Amdt 3 18MAY23

# RNAV (GPS) RWY 1R

NE-3, 20 MAR 2025 to 17 APR 2025

NE-3, 20 MAR 2025 to 17 APR 2025