

CAMP SPRINGS, MARYLAND

# RNAV (RNP) Y RWY 01L

-(USAF)

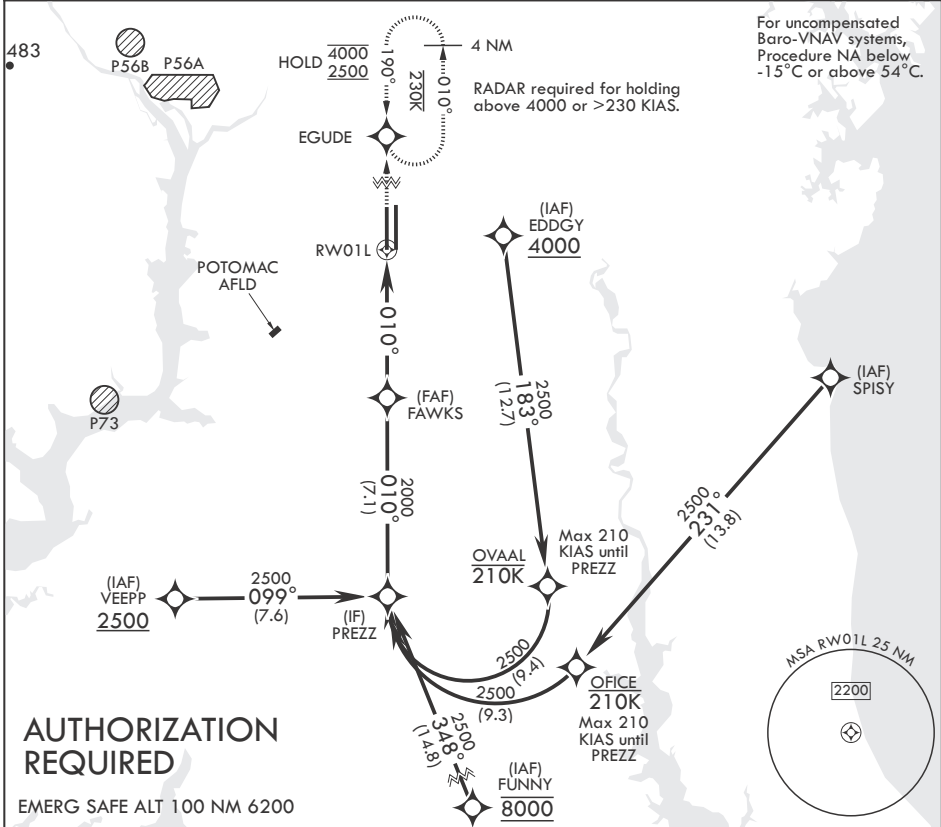
JOINT BASE ANDREWS (ANDREWS AFB) (KADW)

APCH CRS <b>010°</b>	Rwy Idg <b>9318</b>
	TDZE <b>261</b>
	Arprt Elev <b>280</b>

RNP AR APCH. From SPISY, EDDGY: RF.  
 \* When ALS inop, increase RVR to 55, vis to 1 mile.  
 \*\* When ALS inop, increase vis to 1 3/8 miles.

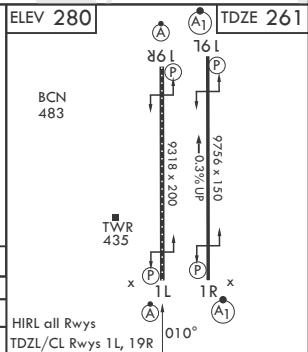
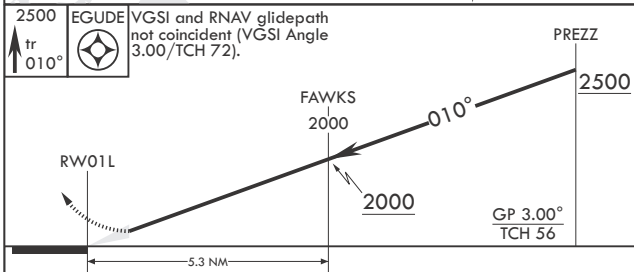
ALSF-2 MISSED APPROACH: Climb to 2500 on track 010° to EGUDE and hold.

ATIS <b>133.675 251.05</b>	POTOMAC APP CON <b>128.0 335.5</b>	TOWER <b>118.4 349.0</b>	GND CON <b>121.8 275.8</b>	CLNC DEL <b>127.55 285.475</b>	CPDLC
-------------------------------	---------------------------------------	-----------------------------	-------------------------------	-----------------------------------	-------



**AUTHORIZATION REQUIRED**

EMERG SAFE ALT 100 NM 6200



CATEGORY	A	B	C	D
RNP 0.15 DA*	641/35	380	(400-5%)	
RNP 0.30 DA**	717/45	456	(500-7%)	

CAMP SPRINGS, MARYLAND

38°49'N - 76°52'W JOINT BASE ANDREWS (ANDREWS AFB) (KADW)

Amdt 2 18MAY23

# RNAV (RNP) Y RWY 01L

NE-3, 20 MAR 2025 to 17 APR 2025

NE-3, 20 MAR 2025 to 17 APR 2025