

CAMP SPRINGS, MARYLAND

RNAV (GPS) Z RWY 1L

-(USAF)

JOINT BASE ANDREWS (ANDREWS AFB) (KADW)

WAAS CH 52205 W01A	APCH CRS 010°	Rwy ldg TDZE Arpt Elev	9318 261 280
--------------------------	------------------	------------------------------	--------------------

DME/DME RNP-0.3 NA

ALS-F-2

MISSED APPROACH: Climb to 2500 direct EGUDE and hold.

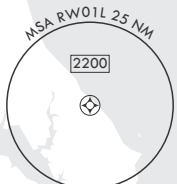
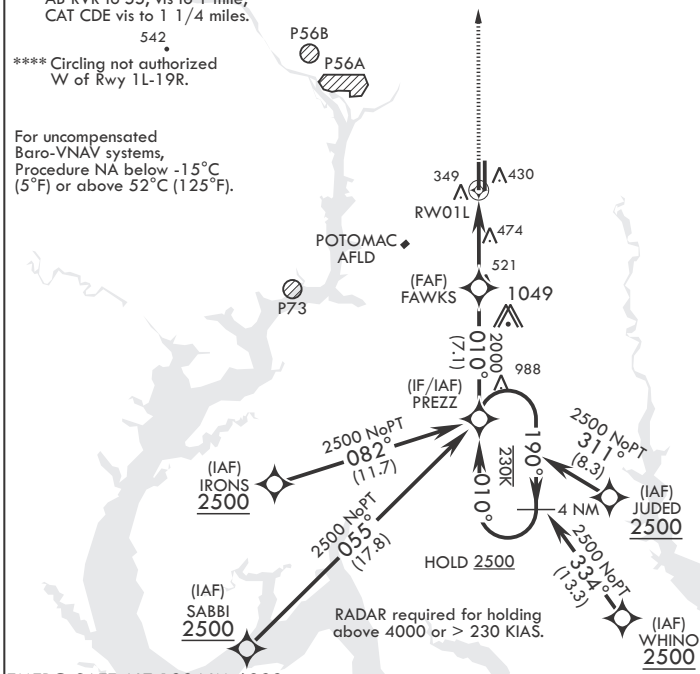
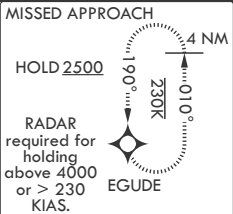
- * When ALS inop, increase RVR to 40, vis to 3/4. When TDZ/CL lights inop, increase RVR to 24.
- ** When ALS inop increase vis to 1 1/4 miles.

ATIS 133.675 251.05	POTOMAC APP CON 128.0 335.5	TOWER 118.4 349.0	GND CON 121.8 275.8	CLNC DEL 127.55 285.475	CPDLC
------------------------	--------------------------------	----------------------	------------------------	----------------------------	-------

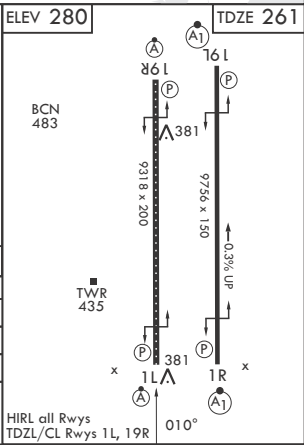
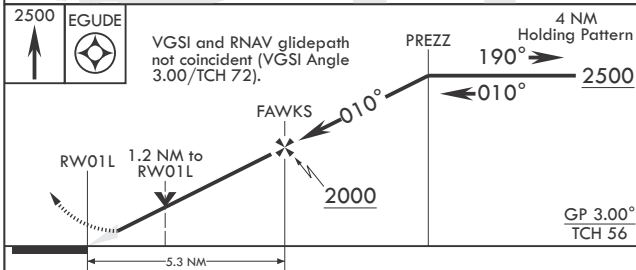
*** When ALS inop increase CAT AB RVR to 55, vis to 1 mile; CAT CDE vis to 1 1/4 miles.

**** Circling not authorized W of Rwy 1L-19R.

For uncompensated Baro-VNAV systems, Procedure NA below -15°C (5°F) or above 52°C (125°F).



EMERG SAFE ALT 100 NM 6200



CATEGORY	A	B	C	D	E
LPV DA*	461/18		200	(200-1/2)	
LNAV/VNAV DA**	687/40		426	(500-3/4)	
LNAV MDA***	700/24	439 (500-1/2)	700/40	439	(500-3/4)
CIRCLING****	780-1	500 (500-1)	780-1 1/2 500 (500-1 1/2)	840-2	560 (600-2)

CAMP SPRINGS, MARYLAND

38°49'N - 76°52'W JOINT BASE ANDREWS (ANDREWS AFB) (KADW)

Amdt 5 18MAY23

RNAV (GPS) Z RWY 1L

NE-3, 20 MAR 2025 to 17 APR 2025

NE-3, 20 MAR 2025 to 17 APR 2025