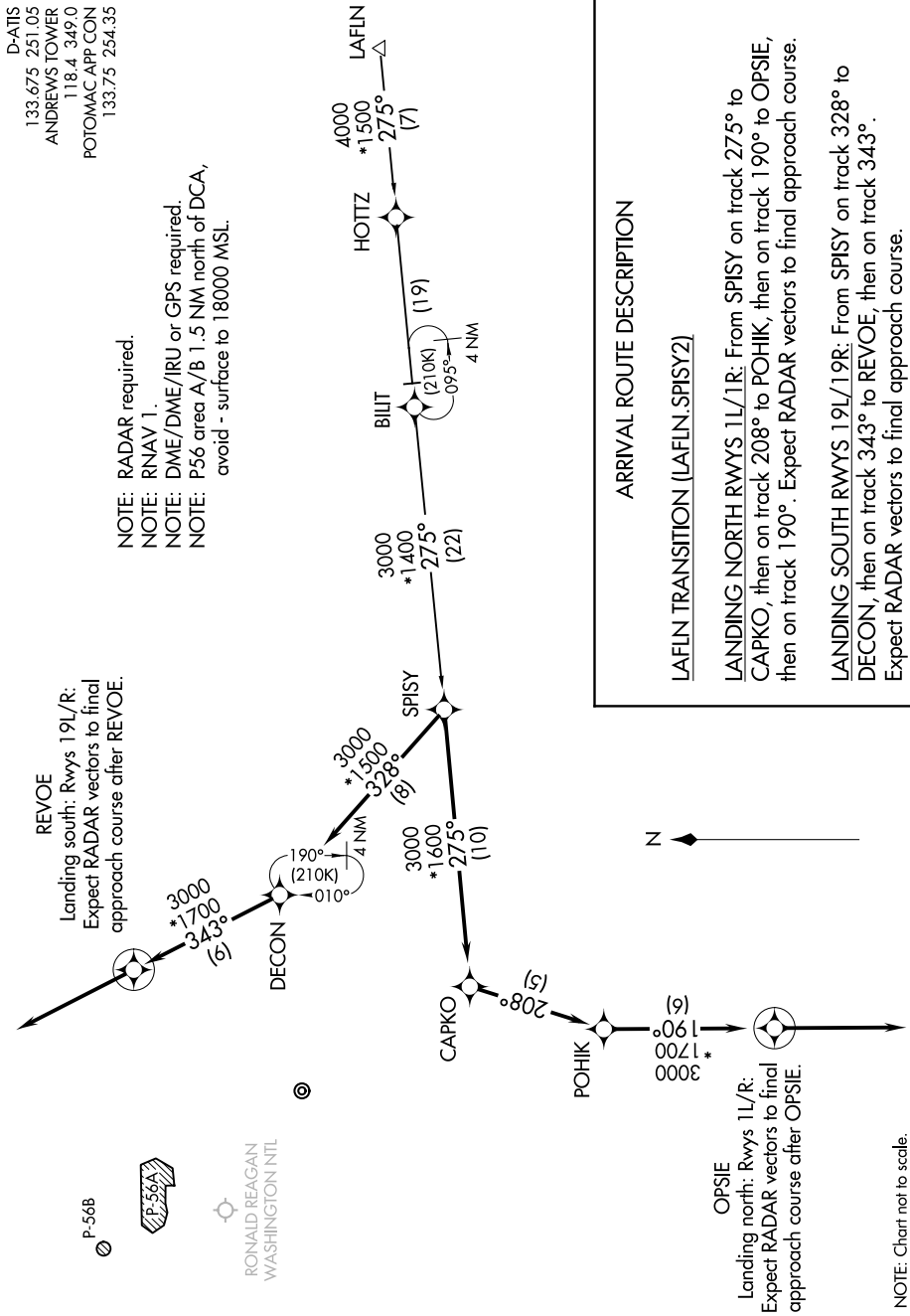


# SPISY TWO ARRIVAL (RNAV)

CAMP SPRINGS, MARYLAND

NE-3, 20 MAR 2025 to 17 APR 2025



D-ATIS  
133.675 251.05  
ANDREWS TOWER  
118.4 349.0  
POTOMAC APP CON  
133.75 254.35

NOTE: RADAR required.  
NOTE: RNAV 1.  
NOTE: DME/DME/IRU or GPS required.  
NOTE: P56 area A/B 1.5 NM north of DCA,  
avoid - surface to 18000 MSL.

## ARRIVAL ROUTE DESCRIPTION

### LAFIN TRANSITION (LAFIN.SPISY2)

**LANDING NORTH RWYS 1L/1R:** From SPISY on track 275° to CAPKO, then on track 208° to POHIK, then on track 190° to OPSIE, then on track 190°. Expect RADAR vectors to final approach course.

**LANDING SOUTH RWYS 19L/19R:** From SPISY on track 328° to DECON, then on track 343° to REVOE, then on track 343°. Expect RADAR vectors to final approach course.

**REVOE**  
Landing south: Rwys 19L/R:  
Expect RADAR vectors to final approach course after REVOE.

**OPSIE**  
Landing north: Rwys 1L/R:  
Expect RADAR vectors to final approach course after OPSIE.

NOTE: Chart not to scale.

NE-3, 20 MAR 2025 to 17 APR 2025

# SPISY TWO ARRIVAL (RNAV)

CAMP SPRINGS, MARYLAND