

CAMP SPRINGS, MARYLAND

TACAN RWY 19L

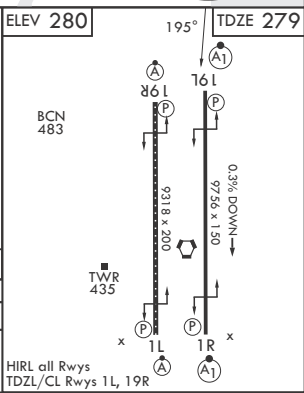
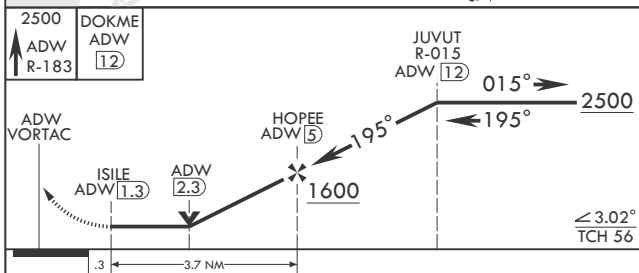
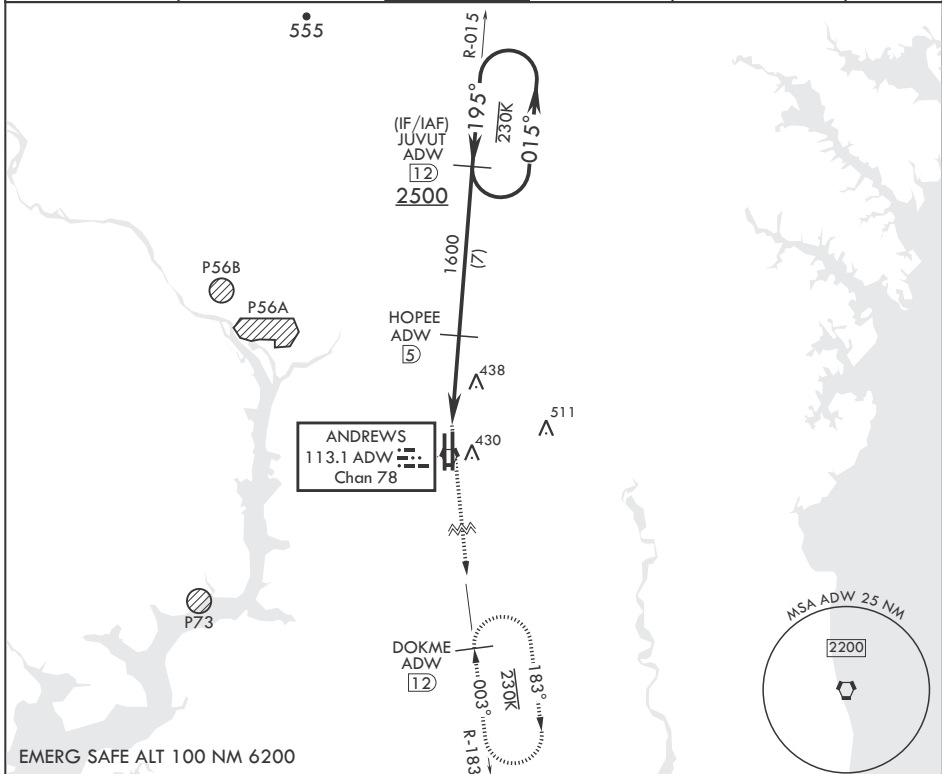
VORTAC ADW 113.1 Chan 78	APCH CRS 195°	Rwy ldg TDZE 279	Arpt Elev 280
--------------------------------	------------------	---------------------	------------------

-(USAF)

JOINT BASE ANDREWS (ANDREWS AFB) (KADW)

RADAR required	ALSIF-1 	MISSED APPROACH: Climbing to 2500 via ADW VORTAC R-183 to DOKME and hold.
<p>* When ALS inop, increase CAT AB RVR to 55, vis to 1 mile, CAT CDE vis to 1 3/8 miles. ** Circling not authorized W of Rwy 1L-19R.</p>		

ATIS 133.675 251.05	POTOMAC APP CON 128.0 335.5	TOWER 118.4 349.0	GND CON 121.8 275.8	CLNC DEL 127.55 285.475	CPDLC
------------------------	--------------------------------	----------------------	------------------------	----------------------------	-------



CATEGORY	A	B	C	D	E
S-19L*	740/24 461 (500-½)		740/50	461	(500-1)
CIRCLING**	780-1 501 (600-1)		780-1½ 501 (600-½)	840-2 561	(600-2)

CAMP SPRINGS, MARYLAND

38°49'N - 76°52'W JOINT BASE ANDREWS (ANDREWS AFB) (KADW)

Amdt 3 18MAY23

TACAN RWY 19L

NE-3, 20 MAR 2025 to 17 APR 2025

NE-3, 20 MAR 2025 to 17 APR 2025