

CAMP SPRINGS, MARYLAND

TACAN RWY 19R

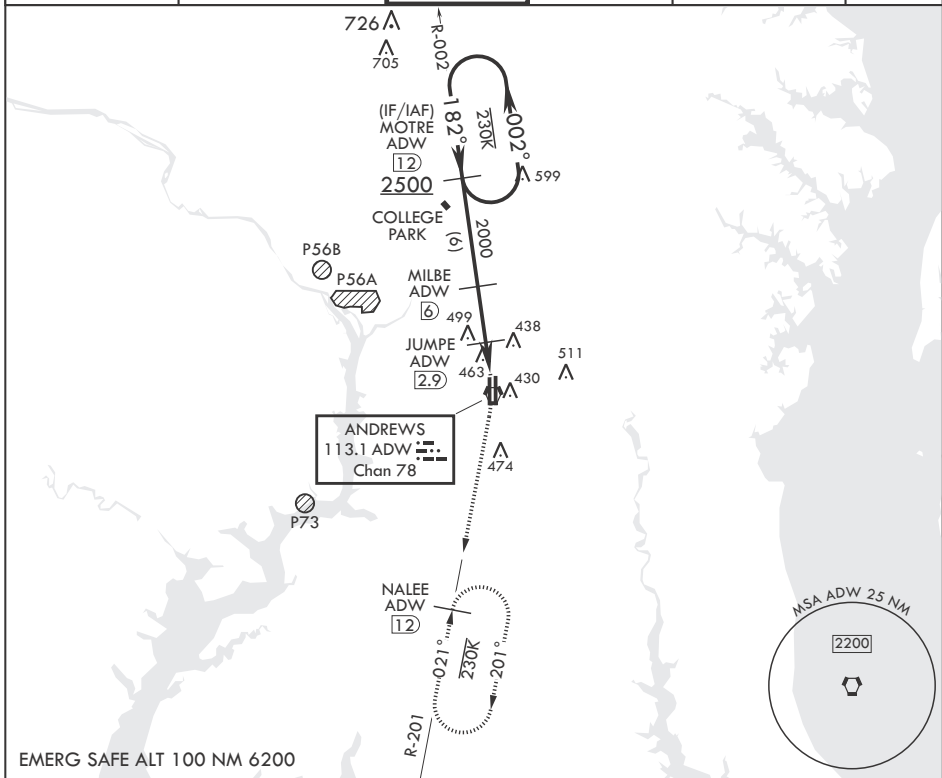
VORTAC ADW 113.1 Chan 78	APCH CRS 182°	Rwy ldg TDZE Arprt Elev	9318 274 280
--------------------------------	------------------	-------------------------------	--------------------

(USAF)

JOINT BASE ANDREWS (ANDREWS AFB) (KADW)

RADAR required	ALSIF-2 	MISSED APPROACH: Climbing to 2500, intercept ADW VORTAC R-201 to NALEE and hold.
<p>▼ * When ALS inop, increase CAT AB RVR to 55, vis to 1 mile, CAT CDE vis to 1 3/8 miles. ** Circling not authorized W of Rwy 1L-19R.</p>		

ATIS 133.675 251.05	POTOMAC APP CON 128.0 335.5	TOWER 118.4 349.0	GND CON 121.8 275.8	CLNC DEL 127.55 285.475	CPDLC
------------------------	--------------------------------	----------------------	------------------------	----------------------------	-------



EMERG SAFE ALT 100 NM 6200

<p>MOTRE R-002 ADW (12)</p> <p>2500 ← 002°</p> <p>182° →</p> <p>182° ↘</p> <p>2000</p> <p>MILBE ADW (6)</p> <p>JUMPE ADW (2.9)</p> <p>960</p> <p>ADW (2.2)</p> <p>BIMKE ADW (1.2)</p> <p>ADW VORTAC</p> <p>† MILBE to MAP</p> <p>† 3.11° TCH 71</p> <p>3.1 NM</p> <p>1.7 NM</p> <p>.2</p>	<p>2500 ADW R-201</p> <p>NALEE ADW (12)</p> <p>ELEV 280</p> <p>TDZE 274</p> <p>BCN 483</p> <p>TWR 433</p> <p>182°</p> <p>861</p> <p>761</p> <p>9318 x 200</p> <p>9756 x 150</p> <p>0.3% UP</p> <p>1L</p> <p>1R</p> <p>x</p>				
CATEGORY	A	B	C	D	E
S-19R*	740/24	466 (500-½)	740/50	466	(500-1)
CIRCLING**	780-1	501 (600-1)	780-1½ 501 (600-1½)	840-2	561 (600-2)

HIRL all Rwys
TDZL/CL Rwys 1L, 19R

CAMP SPRINGS, MARYLAND

38°49'N - 76°52'W JOINT BASE ANDREWS (ANDREWS AFB) (KADW)

Amdt 2 18MAY23

TACAN RWY 19R

NE-3, 20 MAR 2025 to 17 APR 2025

NE-3, 20 MAR 2025 to 17 APR 2025