

CAMP SPRINGS, MARYLAND

TACAN RWY 1L

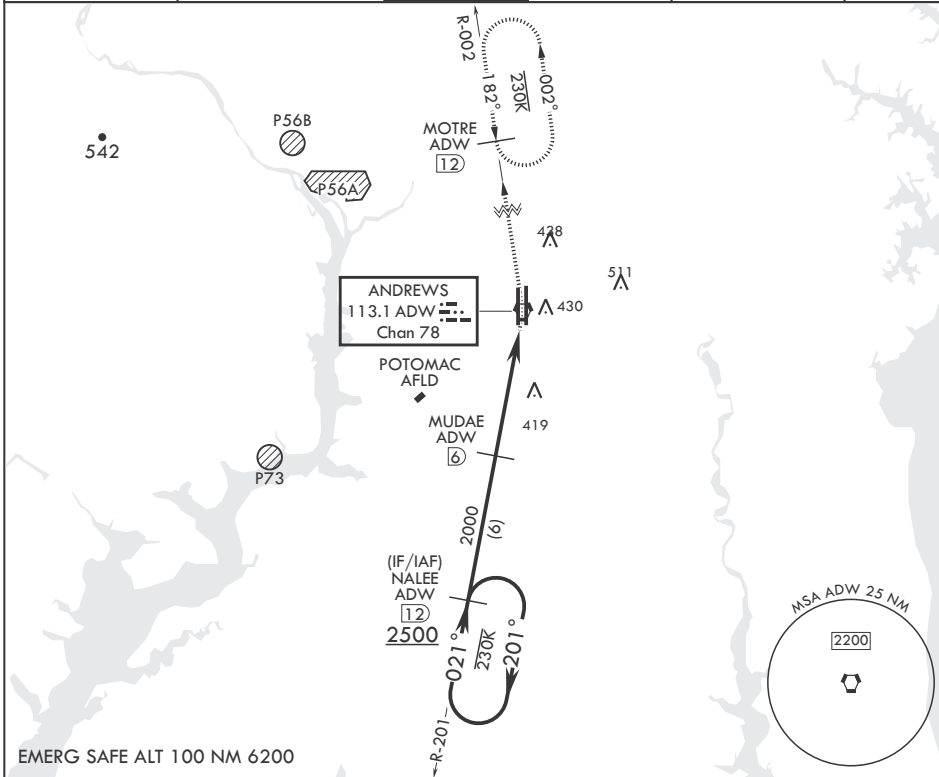
VORTAC ADW 113.1 Chan 78	APCH CRS 021°	Rwy ldg TDZE Arprt Elev	9318 261 280
--------------------------------	------------------	-------------------------------	--------------------

-(USAF)

JOINT BASE ANDREWS (ANDREWS AFB) (KADW)

RADAR required	ALS-F-2 	MISSED APPROACH: Climb to 2500 via ADW VORTAC R-002 to MOTRE/ADW 12 DME and hold.
<p>▼ * When ALS inop, increase CAT AB RVR to 55, vis to 1 mile, CAT CDE vis to 1 3/8 miles. ** Circling not authorized W of Rwy 1L-19R.</p>		

ATIS 133.675 251.05	POTOMAC APP CON 128.0 335.5	TOWER 118.4 349.0	GND CON 121.8 275.8	CLNC DEL 127.55 285.475	CPDLC
------------------------	--------------------------------	----------------------	------------------------	----------------------------	-------



EMERG SAFE ALT 100 NM 6200

<p>2500 ← 201°</p> <p>← 021°</p> <p>2500</p> <p>2.92° ≥ TCH 72</p>		<p>NALEE R-201 ADW 12</p> <p>2000</p> <p>MUDAE ADW 6</p>		<p>2500</p> <p>ADW R-002</p> <p>MOTRE ADW 12</p> <p>ELEV 280</p>		<p>TDZE 261</p> <p>BCN 483</p> <p>TWR 435</p> <p>9318 x 200</p> <p>9756 x 130</p> <p>0.3% UP</p> <p>861</p> <p>761</p> <p>1L</p> <p>1R</p> <p>021°</p>	
<p>2000</p> <p>ADW VORTAC</p> <p>ADW COSUR 1.8</p> <p>ADW COSUR 1.8</p> <p>5.2 NM</p> <p>.2</p>		<p>2000 (6)</p> <p>(IF/IAF) NALEE ADW 12</p> <p>2500</p> <p>021°</p> <p>230K</p> <p>101°</p> <p>R-201</p>		<p>419</p> <p>430</p> <p>478</p> <p>511</p>		<p>MSA ADW 25 NM</p> <p>2200</p>	
CATEGORY	A	B	C	D	E		
S-1L*	720/24	459 (500-½)	720/45	459	(500-¾)		
CIRCLING**	780-1	501 (600-1)	780-1½	501 (600-1½)	840-2	561 (600-2)	

CAMP SPRINGS, MARYLAND

38°49'N - 76°52'W JOINT BASE ANDREWS (ANDREWS AFB) (KADW)

Amdt 2 18MAY23

TACAN RWY 1L

NE-3, 20 MAR 2025 to 17 APR 2025

NE-3, 20 MAR 2025 to 17 APR 2025