

CAMP SPRINGS, MARYLAND

TACAN-B

VORTAC ADW 113.1 Chan 78	APCH CRS 325°	Rwy Idg TDZE Arpt Elev	N/A N/A 280
--------------------------------	------------------	------------------------------	-------------------

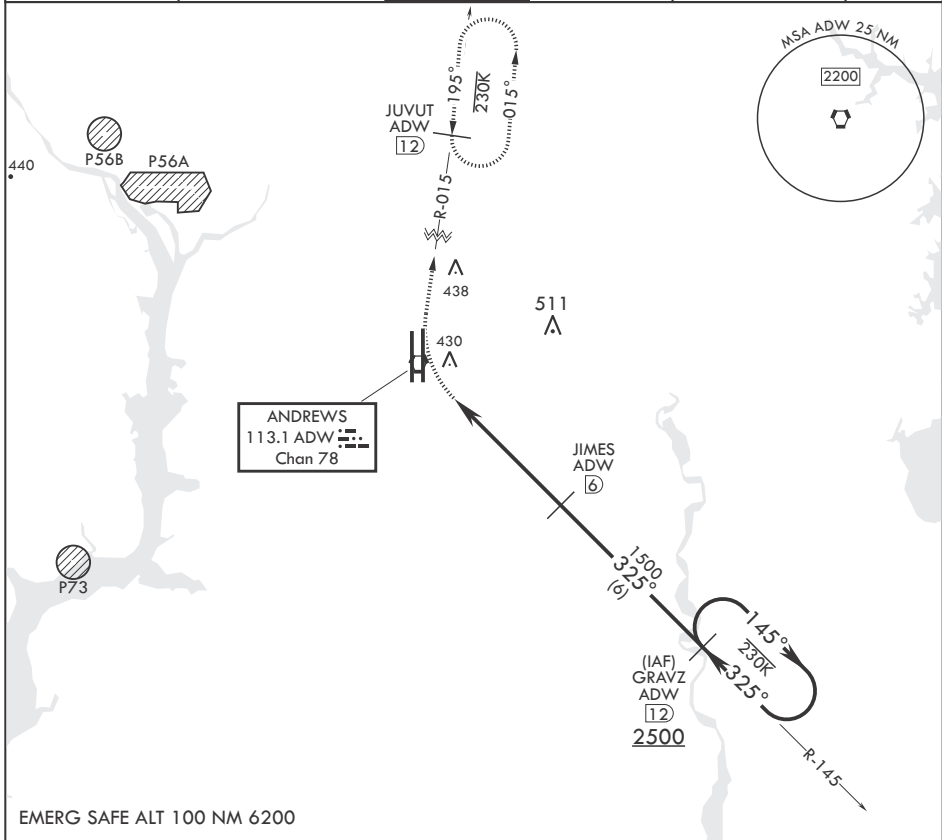
(USAF)

JOINT BASE ANDREWS (ANDREWS AFB) (KADW)

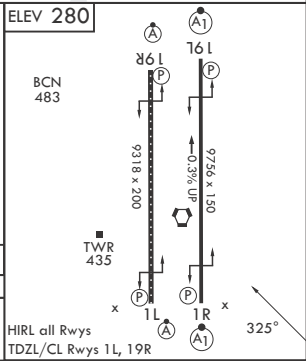
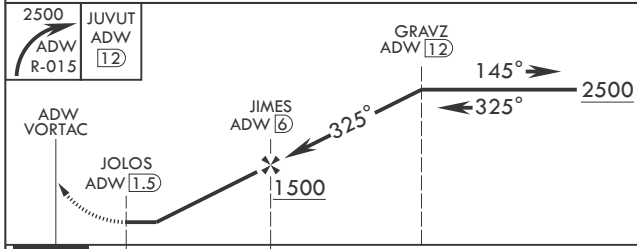
RADAR required MISSED APPROACH: Climbing right turn to 2500 via ADW R-015 to JUVUT and hold.

* Circling not authorized west of Rwy 1L-19R.

ATIS 133.675 251.05	POTOMAC APP CON 128.0 335.5	TOWER 118.4 349.0	GND CON 121.8 275.8	CLNC DEL 127.55 285.475	CPDLC
------------------------	--------------------------------	----------------------	------------------------	----------------------------	-------



EMERG SAFE ALT 100 NM 6200



CATEGORY	A	B	C	D	E
CIRCLING*	780-1¼ 500 (500-1¼)		780-1½ 500 (500-1½)	840-2 560 (600-2)	

CAMP SPRINGS, MARYLAND 38°49'N - 76°52'W JOINT BASE ANDREWS (ANDREWS AFB) (KADW)

Amdt 4 18MAY23

TACAN-B

NE-3, 20 MAR 2025 to 17 APR 2025

NE-3, 20 MAR 2025 to 17 APR 2025