

# FATHE THREE DEPARTURE (RNAV)

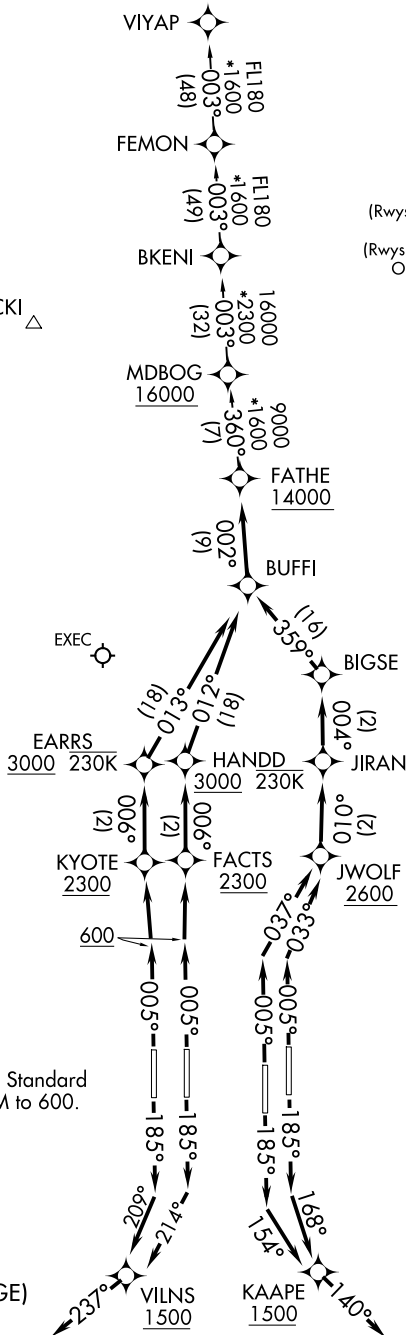
ORLANDO, FLORIDA

<b>TOP ALTITUDE:</b> Rwys 17L/R, 18L/R: 7000 Rwys 35L/R, 36L/R: 16000
RNAV 1 - DME/DME/IRU or GPS.
RADAR required.

D-ATIS DEP  
120.525  
CLNC DEL  
134.7 341.7  
CPDLC  
GND CON  
126.4 (East)  
121.8 (West)  
ORLANDO TOWER  
118.45 253.5  
124.3 253.5  
(Rwys 17L-35R, 17R-35L)  
(Rwys 18L-36R, 18R-36L)  
ORLANDO DEP CON  
124.8 307.0

MICKI  $\Delta$

NOTE: Jet aircraft only.



### TAKEOFF MINIMUMS

Rwys 17L/R, 18L/R, 35L/R, 36L/R: Standard with minimum climb of 500' per NM to 600.

(NARRATIVE ON FOLLOWING PAGE)

NOTE: Chart not to scale.

SE-3, 20 MAR 2025 to 17 APR 2025

SE-3, 20 MAR 2025 to 17 APR 2025



DEPARTURE ROUTE DESCRIPTION  
SEE ADDITIONAL REQUIREMENTS ON AAUP

TAKEOFF RUNWAY 17L: Climb on heading 185° to intercept course 168° to cross KAAPE at or above 1500, then on track 140°, for vectors to BUFFI, thence . . . .

TAKEOFF RUNWAY 17R: Climb on heading 185° to intercept course 154° to cross KAAPE at or above 1500, then on track 140°, for vectors to BUFFI, thence . . . .

TAKEOFF RUNWAY 18L: Climb on heading 185° to intercept course 214° to cross VILNS at or above 1500, then on track 237°, for vectors to BUFFI, thence . . . .

TAKEOFF RUNWAY 18R: Climb on heading 185° to intercept course 209° to cross VILNS at or above 1500, then on track 237°, for vectors to BUFFI, thence . . . .

TAKEOFF RUNWAY 35L: Climb on heading 005° to intercept course 037° to cross JWOLF at or above 2600, then on track 010° to JIRAN, then on track 004° to BIGSE, then on track 359° to BUFFI, thence . . . .

TAKEOFF RUNWAY 35R: Climb on heading 005° to intercept course 033° to cross JWOLF at or above 2600, then on track 010° to JIRAN at or above 3000, then on track 004° to BIGSE, then on track 359° to BUFFI, thence . . . .

TAKEOFF RUNWAY 36L: Climb on heading 005° to 600, then direct KYOTE at or above 2300, then on track 006° to cross EARRS at or above 3000 and at or below 230K, then on track 013° to BUFFI, thence . . . .

TAKEOFF RUNWAY 36R: Climb on heading 005° to 600, then direct FACTS at or above 2300, then on track 006° to cross HANDD at or above 3000 and at or below 230K, then on track 012° to BUFFI, thence . . . .

. . . . on track 002° to cross FATHE at or above 14000, then on assigned transition, RUNWAY 17L/17R, 18L/18R maintain 7000, RUNWAY 35L/35R, 36L/36R maintain 16000, expect filed altitude 10 minutes after departure.

ALL AIRCRAFT: ATC climb gradients: If unable to accept climb rates advise ATC prior to taxi. RUNWAY 35R: 566 FT/NM to 2300, RUNWAY 36L: 637 FT/NM to 2300, RUNWAY 36R: 621 FT/NM to 2300.

VIYAP TRANSITION (FATHE3.VIYAP)

SE-3, 20 MAR 2025 to 17 APR 2025

SE-3, 20 MAR 2025 to 17 APR 2025