

LOC/DME I-ARK 110.95 Chan 46(Y)	APP CRS 185°	Rwy Idg TDZE Apt Elev	9001 90 96
--	------------------------	-----------------------------	---------------------------------------

ILS RWY 17L (SA CAT I)

ORLANDO INTL (MCO)

RNAV 1-DME/DME/IRU or GPS or RADAR required for procedure entry.
DME or RADAR required.

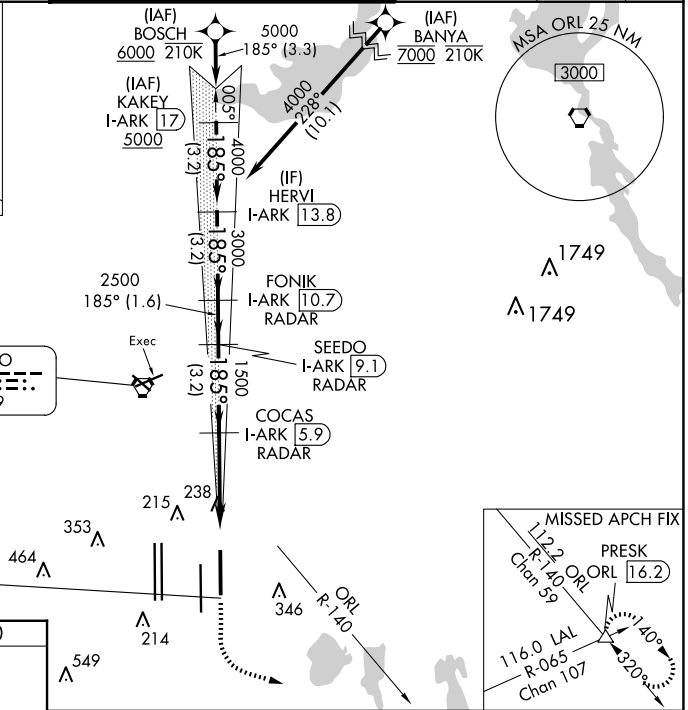
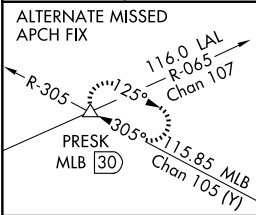
ALSF-2



MISSED APPROACH: Climb to 500 then climbing left turn to 3000 on heading 100° and ORL VORTAC R-140 to PRESK INT/ORL 16.2 DME and hold, continue climb-in-hold to 3000.

⚠ Bright lights on highway midway between Rwy 17L and Rwy 17R may be mistaken for runway lights. Simultaneous approach authorized. Requires specific OPSPEC, MSPEC, or LOA approval.

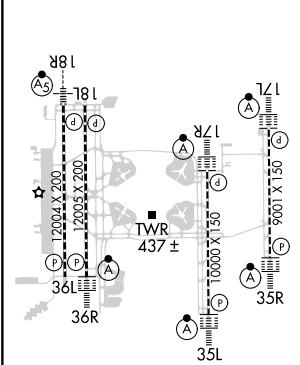
D-ATIS ARR 121.25 DEP 120.525	ORLANDO APP CON 124.8 307.0	ORLANDO TOWER 118.45 253.5 (Rwys 17L-35R, 17R-35L) 124.3 253.5 (Rwys 18L-36R, 18R-36L)	GND CON 126.4 (East) 121.8 (West)	CLNC DEL 134.7 341.7	CPDLC
---	---------------------------------------	--	---	--	-------



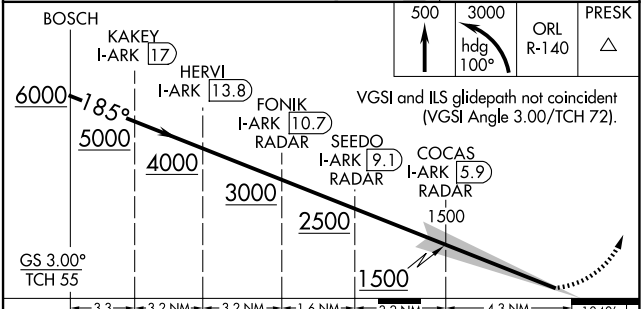
SE-3, 20 MAR 2025 to 17 APR 2025

SE-3, 20 MAR 2025 to 17 APR 2025

ELEV 96	D	TDZE 90
---------	----------	---------



HIRL all Rwys
REIL Rwy 36L
TDZ/CL Rwys 17L/R, 18R, 35L/R and 36R



CATEGORY	A	B	C	D
S-ILS 17L	RA 145/14 150 DA 240			

SA CATEGORY I ILS - SPECIAL AIRCREW & AIRCRAFT CERTIFICATION REQUIRED