

LOC/DME I-CER <b>111.15</b> Chan 48 (Y)	APP CRS <b>005°</b>	Rwy Idg TDZE Apt Elev <b>9000</b> <b>90</b> <b>96</b>
---	------------------------	--

# ILS RWY 35R (SA CAT I)

ORLANDO INTL (MCO)

From HAHNA: RNAV1- DME/DME/IRU or GPS required. Aircraft not DME/DME/IRU or GPS equipped-RADAR required for procedure entry.



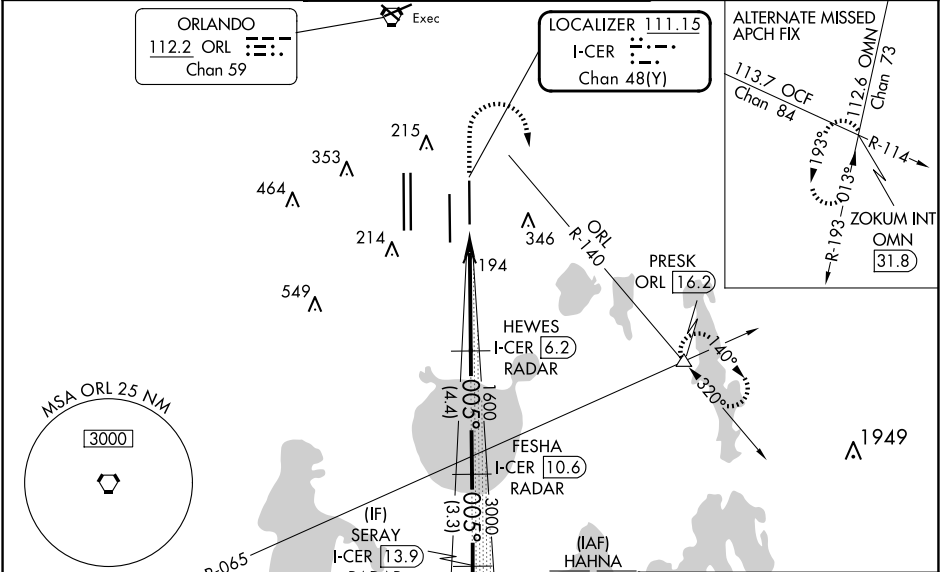
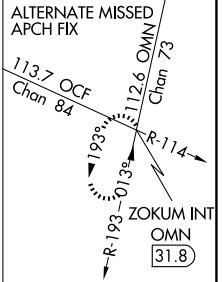
MISSED APPROACH: Climb to 500 then climbing right turn to 3000 on ORL VORTAC R-140 to PRESK INT/ ORL 16.2 DME and hold, continue climb-in-hold to 3000.

Simultaneous approach authorized. Requires specific OPSPEC, MSPEC, or LOA approval. Bright lights on highway midway between Rwy 35L and Rwy 35R may be mistaken for runway lights. When using alternate missed approach, simultaneous approach NA.

D-ATIS ARR <b>121.25</b> DEF <b>120.525</b>	ORLANDO APP CON <b>124.8 307.0</b>	ORLANDO TOWER <b>118.45 253.5</b> (Rwys 17L-35R, 17R-35L) <b>124.3 253.5</b> (Rwys 18L-36R, 18R-36L)	GND CON <b>126.4</b> (East) <b>121.8</b> (West)	CLNC DEL <b>134.7</b> <b>341.7</b>	CPDLC
---	---------------------------------------	--	---	--	-------

ORLANDO  
112.2 ORL  
Chan 59

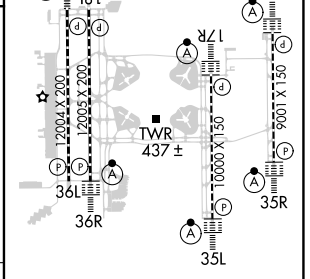
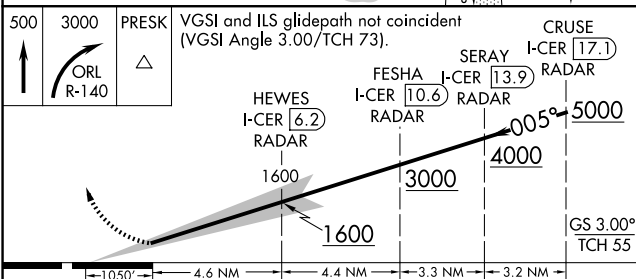
LOCALIZER 111.15  
I-CER  
Chan 48 (Y)



SE-3, 20 MAR 2025 to 17 APR 2025

SE-3, 20 MAR 2025 to 17 APR 2025

MSA ORL 25 NM 3000	ORL R-140 Chan 107	ORL 16.2 PRESK	HEWES I-CER 6.2 RADAR	FESHA I-CER 10.6 RADAR	SERAY I-CER 13.9 RADAR	CRUZE I-CER 17.1 RADAR	HAHNA 6000 2T0K ELEV 96 TDZE 90
-----------------------	-----------------------	-------------------	--------------------------	---------------------------	---------------------------	---------------------------	---------------------------------------



CATEGORY	A	B	C	D
S-ILS 35R	RA 157/14 150 DA 240			

**SA CATEGORY I ILS - SPECIAL AIRCREW & AIRCRAFT CERTIFICATION REQUIRED**

HIRL all Rws  
REIL Rwy 36L  
TDZ/CL Rws 17L/R, 18R,  
35L/R and 36R