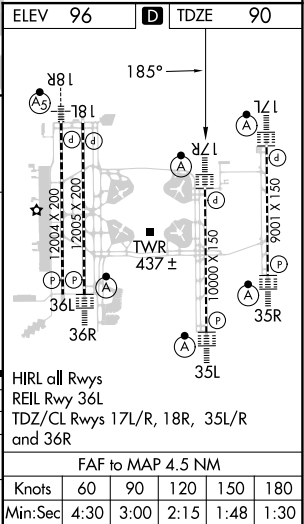
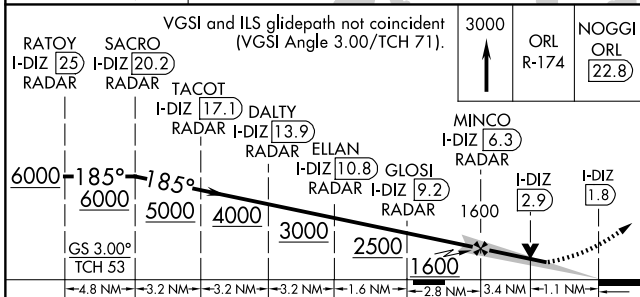
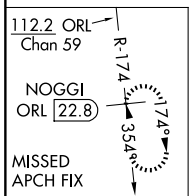
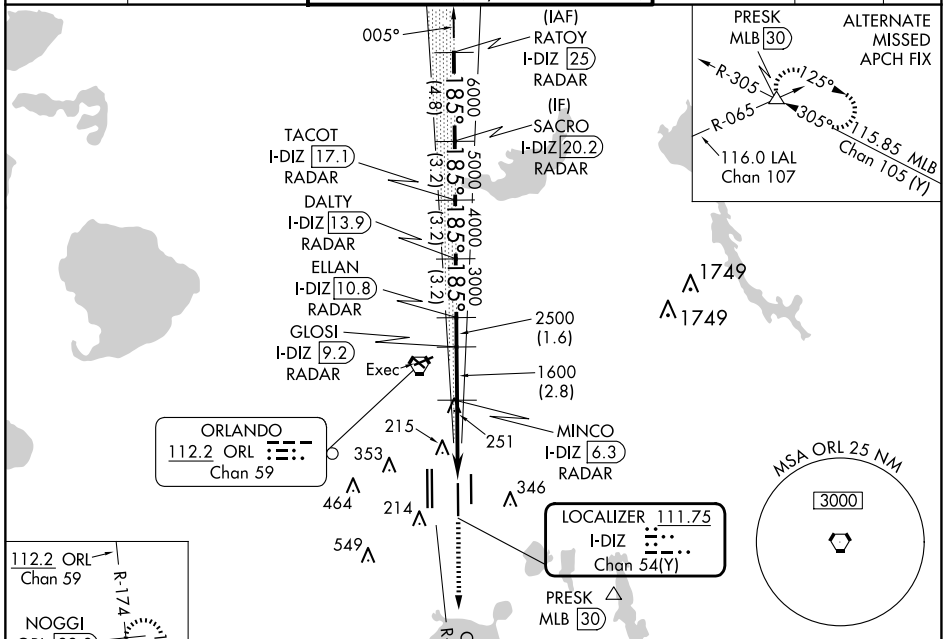


LOC/DME I-DIZ <b>111.75</b> Chan <b>54(Y)</b>	APP CRS <b>185°</b>	Rwy Idg <b>10000</b> TDZE <b>90</b> Apt Elev <b>96</b>
---	------------------------	--

# ILS or LOC RWY 17R

ORLANDO INTL (MCO)

RADAR required for procedure entry. DME or RADAR required.		ALSF-2 	MISSED APPROACH: Climb to 3000 on ORL VORTAC R-174 to NOGGI/ ORL 22.8 DME and hold.
D-ATIS ARR <b>121.25</b> DEP <b>120.525</b>		ORLANDO APP CON <b>124.8 307.0</b>	ORLANDO TOWER <b>118.45 253.5</b> (Rwys 17L-35R, 17R-35L) <b>124.3 253.5</b> (Rwys 18L-36R, 18R-36L)
GND CON <b>126.4</b> (East) <b>121.8</b> (West)		CLNC DEL <b>134.7</b> <b>341.7</b>	CPDLC



CATEGORY	A	B	C	D
S-ILS 17R	290/18 200 (200-1/2)			
S-LOC 17R	520/24 430 (500-1/2)		520/40 430 (500-3/4)	
CIRCLING	740-1 644 (700-1)		740-2	
			644 (700-1 3/4)	644 (700-2)

SE-3, 20 MAR 2025 to 17 APR 2025

SE-3, 20 MAR 2025 to 17 APR 2025