

# ILS or LOC RWY 18R

ORLANDO INTL (MCO)

LOC/DME I-TFE <b>111.9</b> Chan <b>56</b>	APP CRS <b>185°</b>	Rwy Idg <b>12004</b> TDZE <b>94</b> Apt Elev <b>96</b>
---	------------------------	--

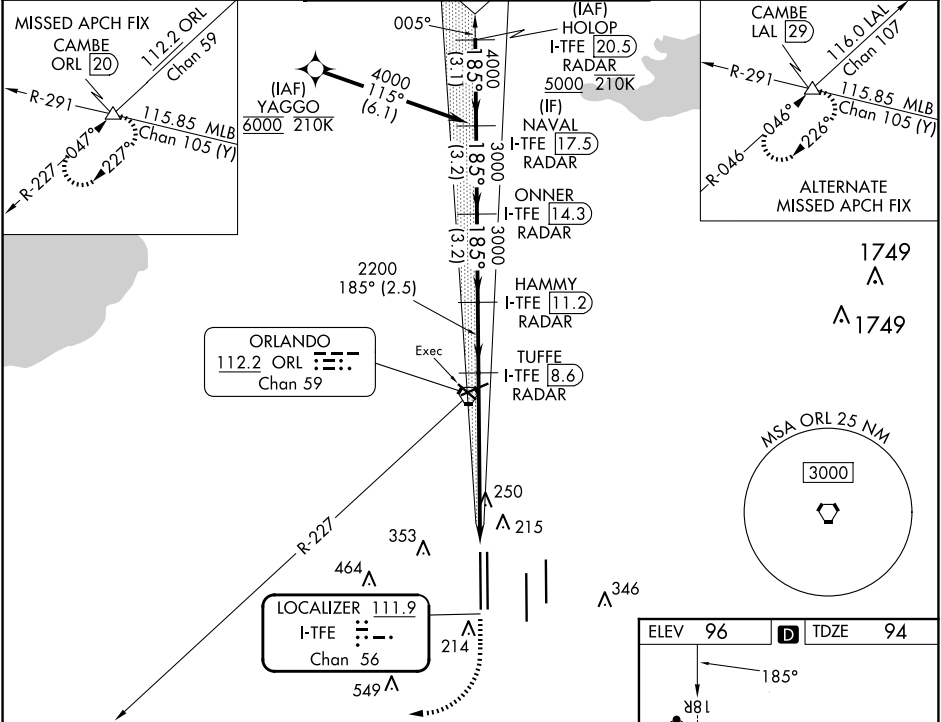
DME or RADAR required.  
RNP APCH-GPS. From YAGGO.

Simultaneous approach authorized.

MALSRL

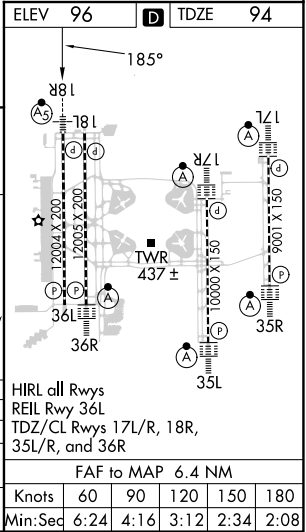
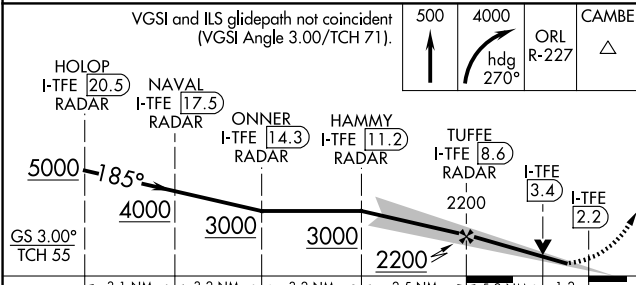
MISSED APPROACH: Climb to 500 then climbing right turn to 4000 on heading 270° and on ORL VORTAC R-227 to CAMBE INT/ORL 20 DME and hold, continue climb-in-hold to 4000.

D-ATIS ARR <b>121.25</b> DEP <b>120.525</b>	ORLANDO APP CON <b>124.8 307.0</b>	ORLANDO TOWER <b>118.45 253.5</b> (Rwys 17L-35R, 17R-35L) <b>124.3 253.5</b> (Rwys 18L-36R, 18R-36L)	GND CON <b>126.4</b> (East) <b>121.8</b> (West)	CLNC DEL <b>134.7</b> <b>341.7</b>	CPDLC
---	---------------------------------------	--	---	--	-------



SE-3, 20 MAR 2025 to 17 APR 2025

SE-3, 20 MAR 2025 to 17 APR 2025



CATEGORY	A	B	C	D
S-ILS 18R	294/18 200 (200-1/2)			
S-LOC 18R	540/24 446 (500-1/2)	540/45 446 (500-3/4)		
CIRCLING	740-1 644 (700-1)	740-1 3/4 644 (700-1 3/4)	740-2 644 (700-2)	
HIRL all Rwys	REIL Rwy 36L			
TDZ/CL Rwys 17L/R, 18R, 35L/R, and 36R	FAF to MAP 6.4 NM			
Knots	60	90	120	150 180
Min:Sec	6:24	4:16	3:12	2:34 2:08