

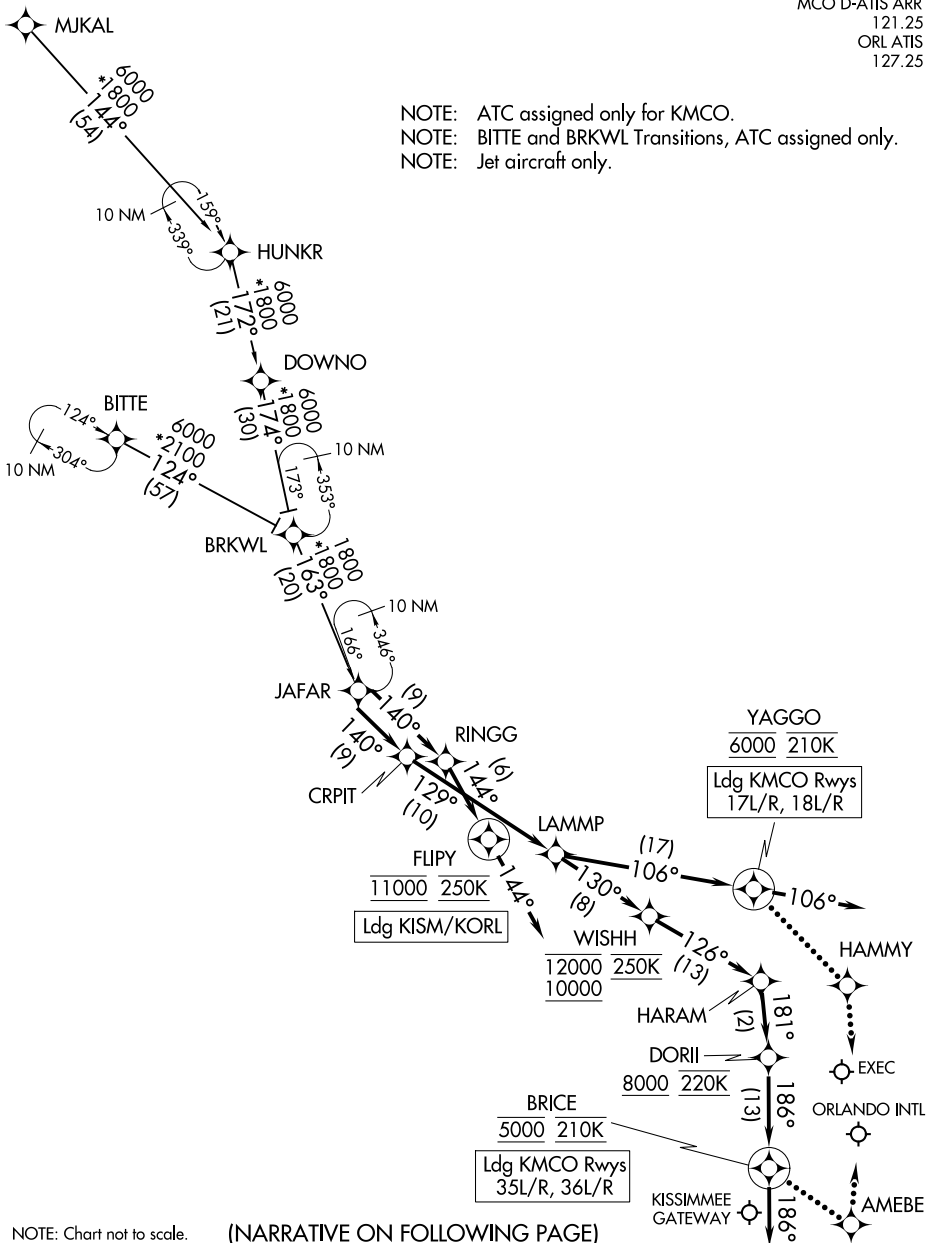
JAFAR THREE ARRIVAL (RNAV)

ORLANDO, FLORIDA

RNAV 1 - DME/DME/IRU or GPS.
RADAR required.

ORLANDO APP CON
134.05 339.8
ISM ATIS
128.775
MCO D-ATIS ARR
121.25
ORLATIS
127.25

NOTE: ATC assigned only for KMCO.
NOTE: BITTE and BRKWL Transitions, ATC assigned only.
NOTE: Jet aircraft only.



SE-3, 20 MAR 2025 to 17 APR 2025

SE-3, 20 MAR 2025 to 17 APR 2025

NOTE: Chart not to scale. (NARRATIVE ON FOLLOWING PAGE)

JAFAR THREE ARRIVAL (RNAV)

ORLANDO, FLORIDA

ARRIVAL ROUTE DESCRIPTION

BITTE TRANSITION (BITTE.JAFAR3)
BRKWL TRANSITION (BRKWL.JAFAR3)
MJKAL TRANSITION (MJKAL.JAFAR3)

KMCO: From JAFAR on track 140° to CRPIT, then on track 129° to LAMMP.

LANDING KMCO RUNWAYS 17L/R, 18L/R: From LAMMP on track 106° to cross YAGGO at 6000 and at 210K, then on track 106°. Expect RADAR vectors to final approach course.

LANDING KMCO RUNWAYS 35L/R, 36L/R: From LAMMP on track 130° to cross WISHH between 10000 and 12000 and at 250K, then on track 126° to HARAM, then on track 181° to cross DORII at or above 8000 and at 220K, then on track 186° to cross BRICE at 5000 and at 210K, then on track 186°. Expect RADAR vectors to final approach course.

LANDING KISM/KORL: From JAFAR on track 140° to RINGG, then on track 144° to cross FLIPY at 11000 and at 250K, then on track 144°. Expect RADAR vectors to final approach course.

LOST COMMUNICATIONS

KMCO LANDING NORTH: Continue track to BRICE, then proceed direct AMEBE, intercept Rwy 36L final approach course, conduct approach.

KMCO LANDING SOUTH: Continue track to YAGGO, then proceed direct to HAMMY, intercept Rwy 18R final approach course, conduct approach.

SE-3, 20 MAR 2025 to 17 APR 2025

SE-3, 20 MAR 2025 to 17 APR 2025