

MINNIE SIX ARRIVAL  
(MINNIE.MINNEE6) 20FEB25

(MINNIE.MINNEE6) 25051  
MINNIE SIX ARRIVAL

RADAR required.

ORLANDO APP CON  
134.05 339.8  
ISM ATIS  
128.775  
LEE ATIS  
134.325  
MCO D-ATIS ARR  
121.25  
ORL ATIS  
127.25  
SFB ATIS  
125.975  
TIX ATIS  
120.625

OCALA  
113.7 OCF  
Chan 84

ORLANDO  
112.2 ORL  
Chan 59

NOTE: LEESBURG INTL: Expect RADAR vectors to airport after UNITY.  
NOTE: All other airports: Expect RADAR vectors to final approach course after UNITY.

**ANDRO  
JET VERTICAL NAVIGATION  
PLANNING INFORMATION**

Orlando Intl Landing South: Expect clearance to cross at 13000.  
Orlando Intl Landing North: Expect clearance to cross at 13000 and 250K.

ST PETERSBURG  
116.4 PIE  
Chan 111

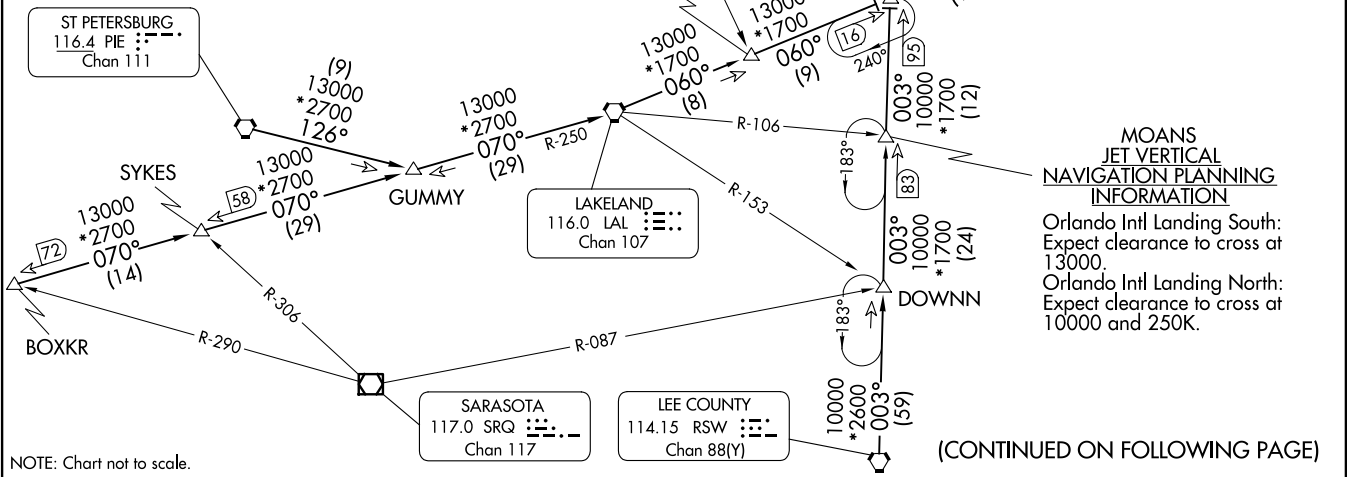
LAKELAND  
116.0 LAL  
Chan 107

SARASOTA  
117.0 SRQ  
Chan 117

LEE COUNTY  
114.15 RSW  
Chan 88(Y)

**MOANS  
JET VERTICAL NAVIGATION  
PLANNING INFORMATION**

Orlando Intl Landing South: Expect clearance to cross at 13000.  
Orlando Intl Landing North: Expect clearance to cross at 10000 and 250K.



NOTE: Chart not to scale.

(CONTINUED ON FOLLOWING PAGE)

AL-571 (FAA)

ORLANDO, FLORIDA

ORLANDO, FLORIDA

# MINEE SIX ARRIVAL

ORLANDO, FLORIDA

## ARRIVAL ROUTE DESCRIPTION

BOXKR TRANSITION (BOXKR.MINEE6): From over BOXKR on LAL R-250 to LAL VORTAC, then on LAL R-060 to MINEE. Thence. . . .

LEE COUNTY TRANSITION (RSW.MINEE6): From over RSW VORTAC on RSW R-003 to MINEE. Thence. . . .

ST PETERSBURG TRANSITION (PIE.MINEE6): From over PIE VORTAC on PIE R-126 to GUMMY, then on LAL R-250 to LAL VORTAC, then on LAL R-060 to MINEE. Thence. . . .

. . . . from over MINEE on LAL R-060 to UNITY, then on ORL R-200 to ORL VORTAC.

SE-3, 20 MAR 2025 to 17 APR 2025

SE-3, 20 MAR 2025 to 17 APR 2025