

WAAS CH 86314 W35A	APP CRS 005°	Rwy Idg TDZE Apt Elev	9001 90 96
--	------------------------	-----------------------------	---------------------------------------

RNAV (GPS) RWY 35R

ORLANDO INTL (MCO)

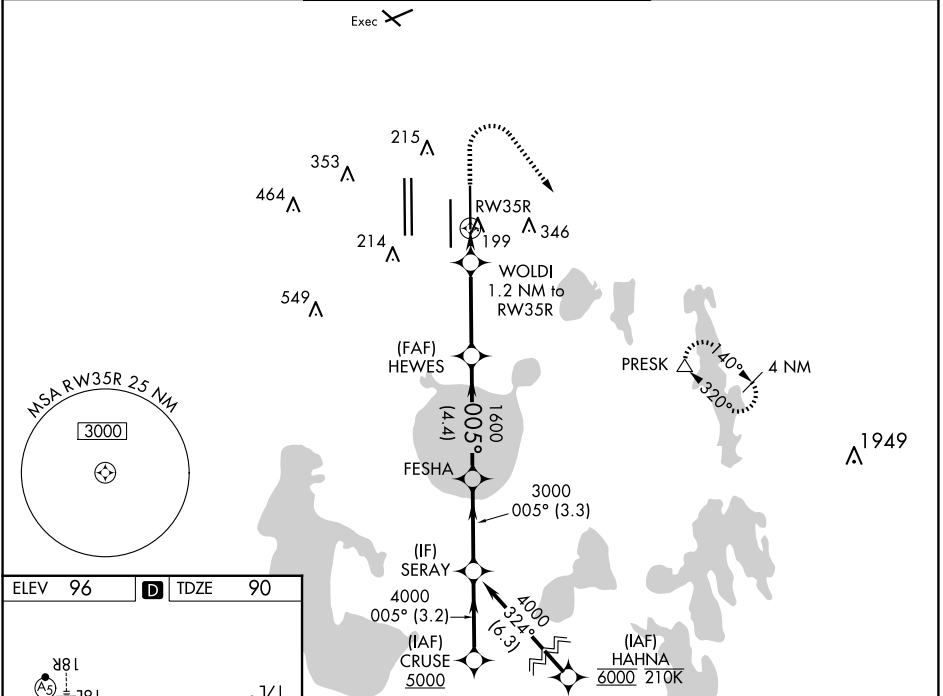
RNP APCH.

Simultaneous approach authorized. LNAV procedure NA during simultaneous operations. Use of FD or AP required during simultaneous operations. For uncompensated Baro-VNAV systems, LNAV/VNAV NA below 1°C or above 54°C. For inop ALS, increase LNAV/VNAV all Cats visibility to RVR 4500, and LNAV Cats C/D visibility to RVR 5500. Bright lights on highway midway between Rwy 35L and Rwy 35R may be mistaken for runway lights.

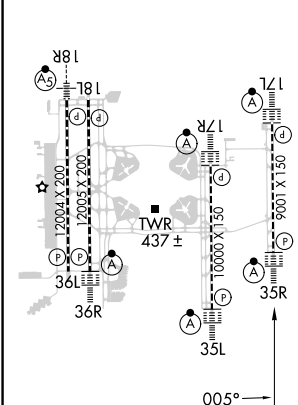


MISSED APPROACH: Climb to 500 then climbing right turn to 3000 direct PRESK and hold, continue climb-in-hold to 3000.

D-ATIS ARR 121.25 DEP 120.525	ORLANDO APP CON 124.8 307.0	ORLANDO TOWER 118.45 253.5 (Rwys 17L-35R, 17R-35L) 124.3 253.5 (Rwys 18L-36R, 18R-36L)	GND CON 126.4 (East) 121.8 (West)	CLNC DEL 134.7 341.7	CPDLC
---	---------------------------------------	--	---	--	-------

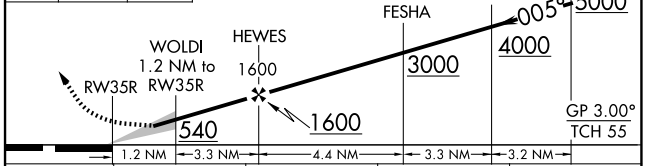


ELEV 96	D TDZE 90
---------	------------------



HIRL all Rwy
REIL Rwy 36L
TDZ/CL Rwys 17L/R, 18R,
35L/R, and 36R

500 3000 PRESK VGSI and RNAV glidepath not coincident (VGSI Angle 3.00/TCH 73).



CATEGORY	A	B	C	D
LPV DA		290/18	200 (200-½)	
LNAV/VNAV DA		360/24	270 (300-½)	
LNAV MDA	460/24	370 (400-½)	460/35	370 (400-¾)
CIRCLING	740-1	644 (700-1)	740-1¾ 644 (700-1¾)	740-2 644 (700-2)

SE-3, 20 MAR 2025 to 17 APR 2025

SE-3, 20 MAR 2025 to 17 APR 2025