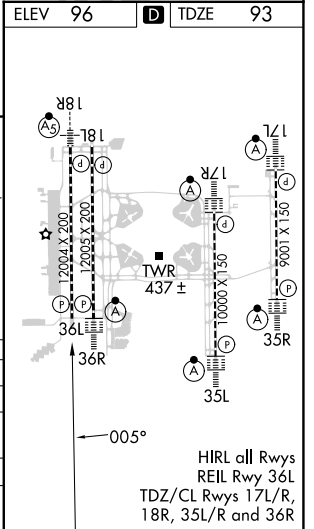
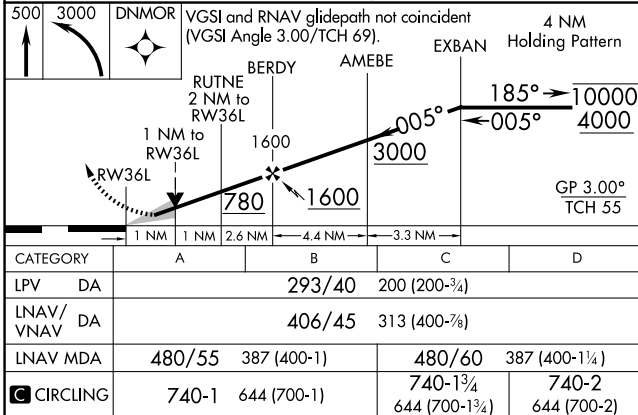
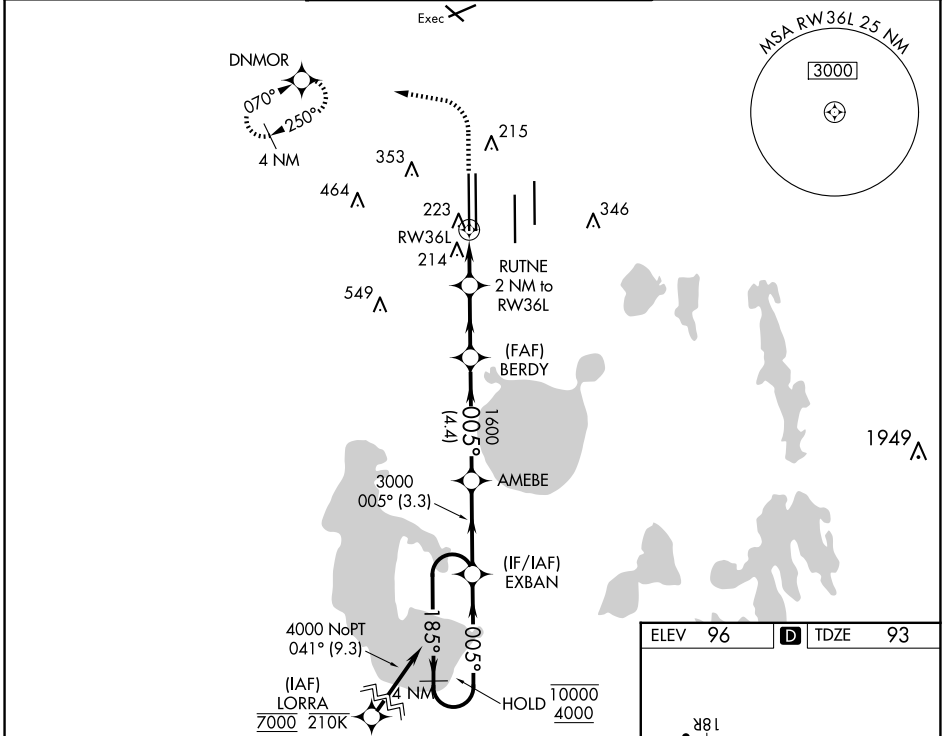


WAAS CH <b>82313</b> <b>W36B</b>	APP CRS <b>005°</b>	Rwy Idg <b>11621</b> TDZE <b>93</b> Apt Elev <b>96</b>
--	------------------------	--

# RNAV (GPS) RWY 36L

ORLANDO INTL (MCO)

RNP APCH.		MISSED APPROACH: Climb to 500 then climbing left turn to 3000 direct DNMOR and hold, continue climb-in-hold to 3000.	
▼ Simultaneous approach authorized. LNAV procedure NA during simultaneous operations. Use of FD or AP required during simultaneous operations. For uncompensated Baro-VNAV systems, LNAV/VNAV NA below 1°C or above 54°C.			
D-ATIS ARR <b>121.25</b> DEP <b>120.525</b>	ORLANDO APP CON <b>124.8 307.0</b>	ORLANDO TOWER <b>118.45 253.5</b> (Rwys 17L-35R, 17R-35L) <b>124.3 253.5</b> (Rwys 18L-36R, 18R-36L)	GND CON <b>126.4</b> (East) <b>121.8</b> (West) CLNC DEL <b>134.7</b> <b>341.7</b> CPDLC



SE-3, 20 MAR 2025 to 17 APR 2025

SE-3, 20 MAR 2025 to 17 APR 2025