

PEORIA, ILLINOIS

HI-VOR Y or TACAN Y RWY 31

| | | |
|--|-------------------------|---|
| VORTAC PIA 115.2 Chan 99 | APCH CRS 281° | Rwy Idg 10,104 TDZE Arpt Elev 661 |
|--|-------------------------|---|

[USAF] GENERAL DOWNING - PEORIA INTL (KPIA)

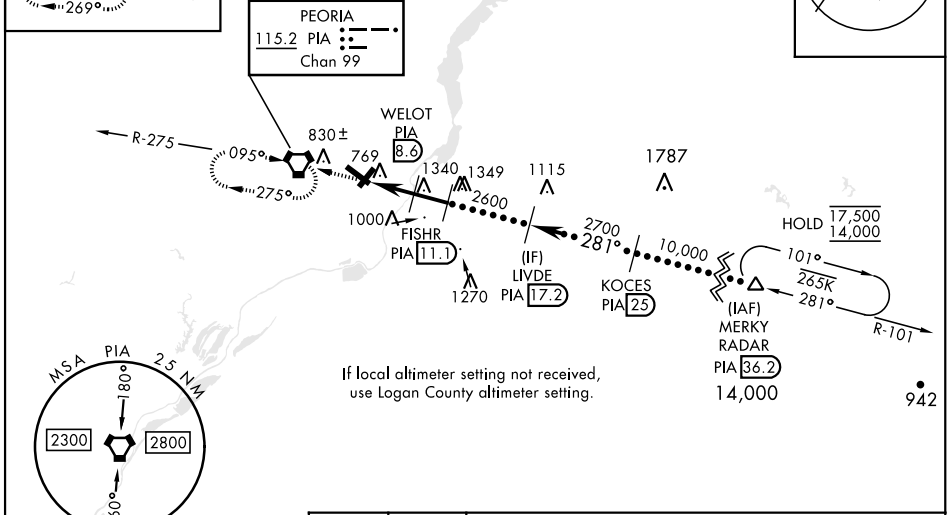
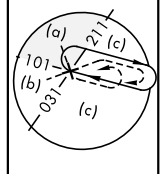
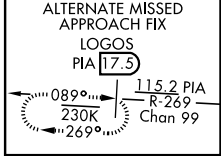
DME required. RADAR required for procedure entry.

▼ *Straight-in Rwy 31, Circling Rwy 13-31 not authorized at night.



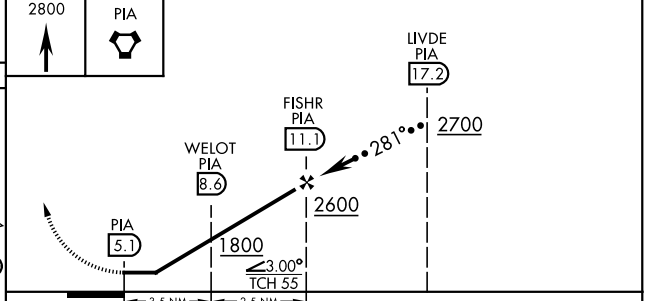
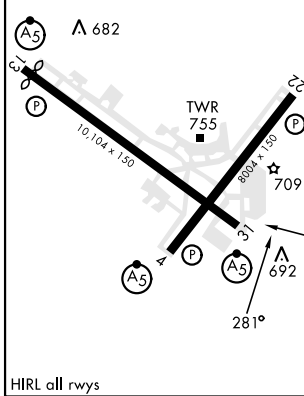
MISSED APPROACH: Climb to 2800, direct PIA VORTAC and hold. Continue climb-in-hold to 2800. (TACAN aircraft: continue on PIA R-269 to LOGOS/PIA 17.5 DME and hold west, right turn 089° inbound).

| | | | |
|----------------------------|---|-------------------------------------|--------------------------------|
| ATIS 126.1 282.2 | SAINT LOUIS APP CON 125.8 269.2 | PEORIA TOWER 124.0 353.85 | GND CON 121.85 348.6 |
|----------------------------|---|-------------------------------------|--------------------------------|



EMERG SAFE ALT 100 NM 3300
ELEV **661** D TDZE **650**

Rwy 4 Idg 7826'
Rwy 13 Idg 9604'



| CATEGORY | C | D | E |
|-------------------------------|-------------------------|-------------------------|-------------------------|
| S-31* | 1040/60 | 390 (400-1½) | |
| CIRCLING* | 1180-1½ 519 (600-1½) | 1400-2¼ 739 (800-2¼) | 1680-3 1019 (1100-3) |
| LOGAN COUNTY ALTIMETER MINIMA | | | |
| S-31* | 1140-1¾ | 490 (500-1¾) | |
| CIRCLING* | 1280-1¾ 619 (700-1¾) | 1500-2¾ 839 (900-2¾) | 1780-3 1119 (1200-3) |

PEORIA, ILLINOIS

40°40'N-89°42'W

GENERAL DOWNING - PEORIA INTL (KPIA)

Amtd 2 31OCT24

HI-VOR Y or TACAN Y RWY 31

EC-3, 20 MAR 2025 to 17 APR 2025

EC-3, 20 MAR 2025 to 17 APR 2025