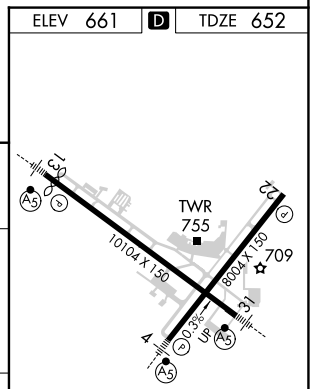
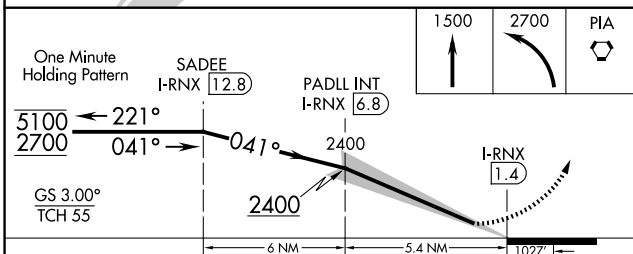
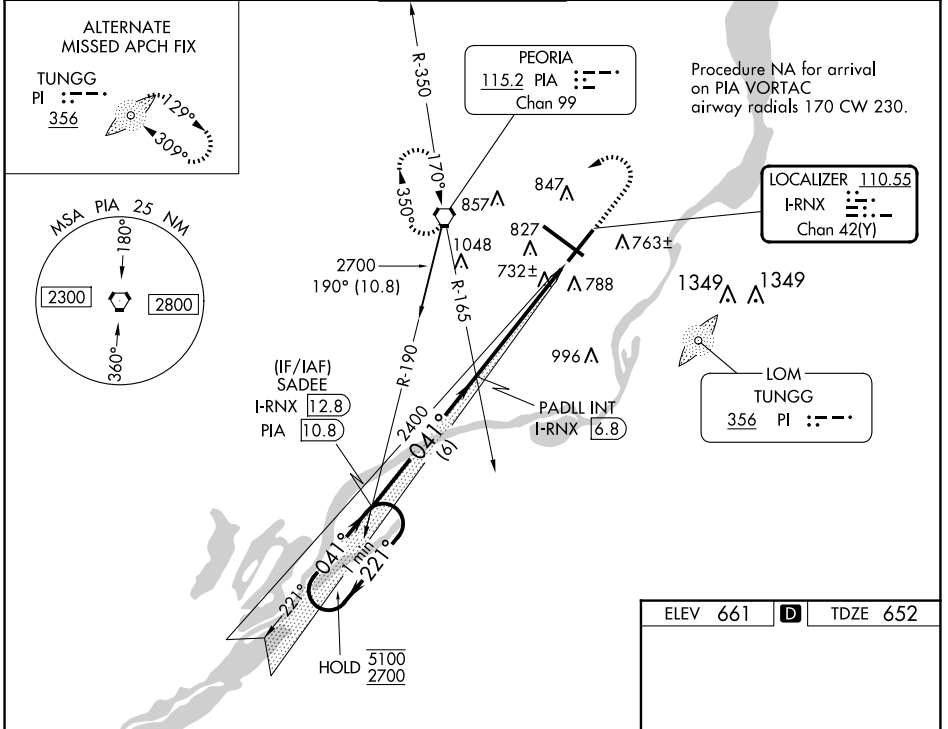


LOC/DME I-RNX <b>110.55</b> Chan 42 (Y)	APP CRS <b>041°</b>	Rwy Idg TDZE Apt Elev	<b>7826</b> <b>652</b> <b>661</b>
---	------------------------	-----------------------------	---

**ILS RWY 4 (SA CAT I & II)**  
GENERAL DOWNING - PEORIA INTL(PIA)

DME required.		MALSR 	MISSED APPROACH: Climb to 1500 then climbing left turn to 2700 direct PIA VORTAC and hold, continue climb-in-hold to 2700.
SA CAT I: Requires specific OPSPEC, MSPEC, or LOA approval and use of HUD to DH. SA CAT II: Reduced Lighting: requires specific OPSPEC, MSPEC, or LOA approval and use of Autoland or HUD to touchdown.			

ATIS <b>126.1 282.2</b>	SAINT LOUIS APP CON <b>125.8 269.2</b>	PEORIA TOWER <b>124.0 353.85</b>	GND CON <b>121.85 348.6</b>	CLNC DEL <b>124.675 317.55</b>
----------------------------	---	-------------------------------------	--------------------------------	-----------------------------------



CATEGORY	A	B	C	D
S-ILS 4	SA CAT I RA 171/14 150 DA 802			
S-ILS 4	SA CAT II RA 115/12 100 DA 752			

ELEV 661	<b>D</b>	TDZE 652
----------	----------	----------

**SA CATEGORY I & II ILS - SPECIAL AIRCREW & AIRCRAFT CERTIFICATION REQUIRED**

PEORIA, ILLINOIS  
Amdt 4 07OCT21

GENERAL DOWNING - PEORIA INTL(PIA)  
40°40'N-89°42'W

**ILS RWY 4 (SA CAT I & II)**

EC-3, 20 MAR 2025 to 17 APR 2025

EC-3, 20 MAR 2025 to 17 APR 2025

HIRL Rwy's 4-22 and 13-31