

LOM PI	APP CRS	Rwy Idg	10104
356	309°	TDZE	650
		Apt Elev	661

NDB RWY 31

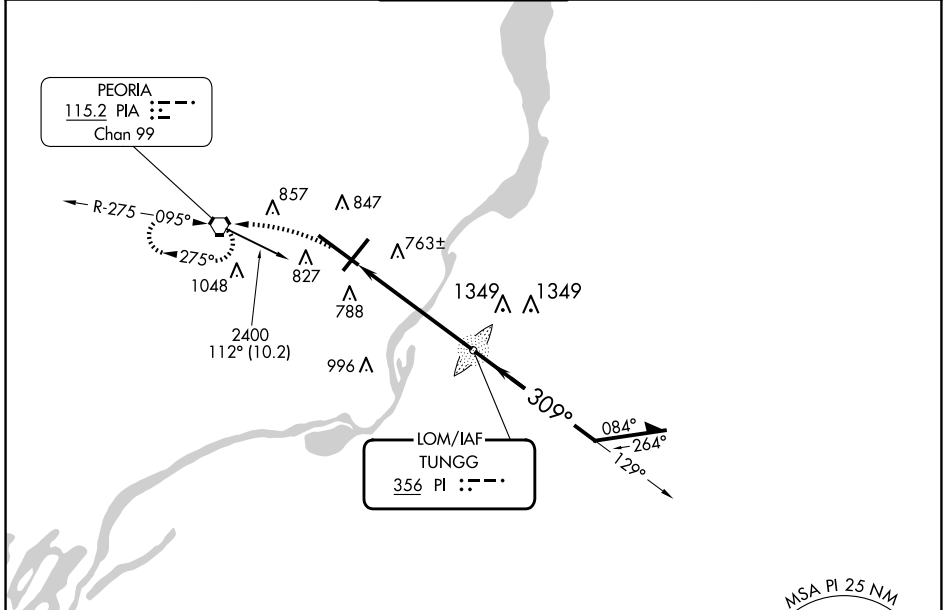
GENERAL DOWNING - PEORIA INTL (PIA)

▼ For inop ALS, increase S-31 Cat A/B visibility to RVR 5500, and Cat C/D to 1 3/8 SM. When local altimeter setting not received, use Logan County altimeter setting and increase all MDA 100 feet, increase S-31 Cat C and D visibility 1/4 mile, and Circling Cat C 1/4 mile and Cat D 1/2 mile. Circling Rwy 13, 31 NA at night.

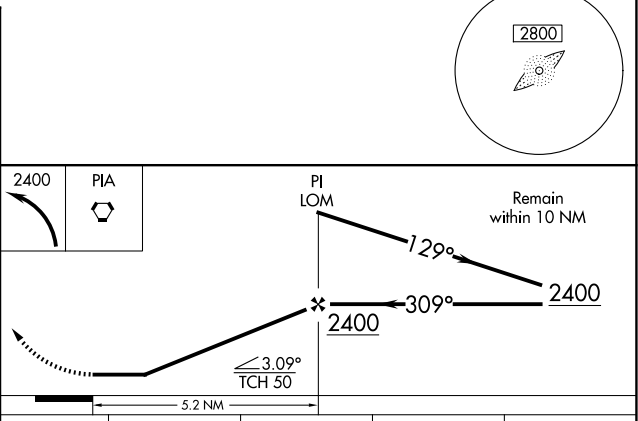
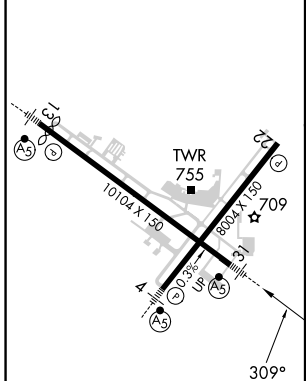


MISSED APPROACH: Climbing left turn 2400 direct PIA VORTAC and hold.

ATIS	SAINT LOUIS APP CON	PEORIA TOWER	GND CON	CLNC DEL
126.1 282.2	125.8 269.2	124.0 353.85	121.85 348.6	124.675 317.55



ELEV 661	D	TDZE 650
----------	----------	----------



HIRL Rwy 4-22 and 13-31

FAF to MAP 5.2 NM

Knots	60	90	120	150	180
Min:Sec	5:12	3:28	2:36	2:05	1:44

CATEGORY	A	B	C	D
S-31	1140/40 490 (500-3/4)		1140/50 490 (500-1)	
<input checked="" type="checkbox"/> CIRCLING	1160-1 499 (500-1)		1180-1 1/2 519 (600-1 1/2)	1400-2 1/4 739 (800-2 1/4)

NDB RWY 31

EC-3, 20 MAR 2025 to 17 APR 2025

EC-3, 20 MAR 2025 to 17 APR 2025