

APP CRS	Rwy Idg	<b>8004</b>
<b>221°</b>	TDZE	<b>661</b>
	Apt Elev	<b>661</b>

# RNAV (GPS) RWY 22

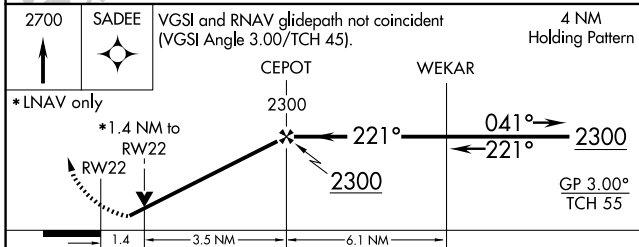
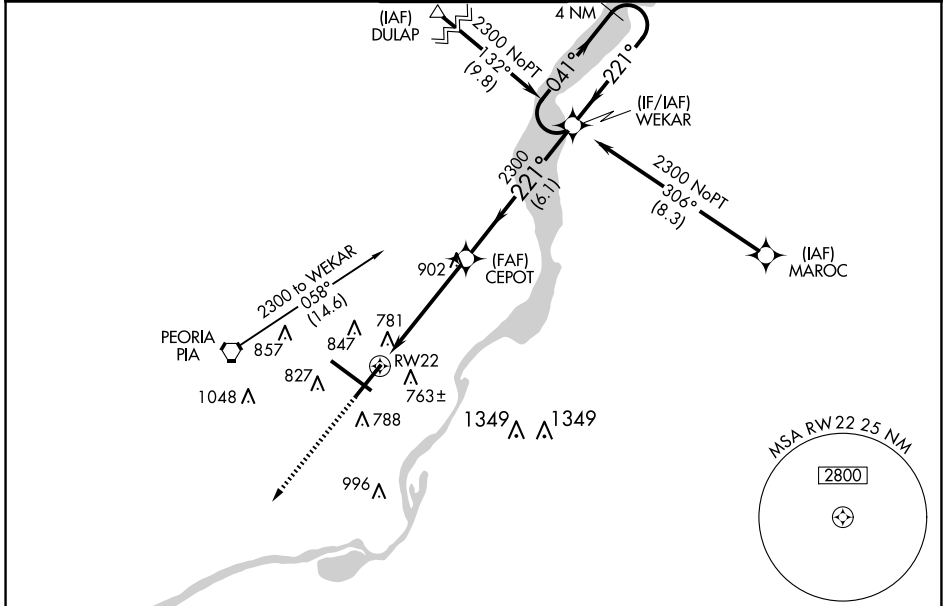
GENERAL DOWNING - PEORIA INTL (PIA)

RNP APCH

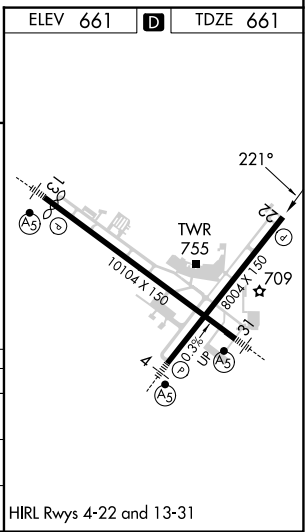
▼ For uncompensated Baro-VNAV systems, LNAV/VNAV NA below -19°C or above 54°C.  
 ▲ When local altimeter setting not received, use Logan County altimeter setting and increase all DA 89 feet and all MDA 100 feet, increase LNAV/VNAV DA all Cats visibility to 1½ mile, LNAV MDA Cat C and D visibility to ¾ mile, and Circling Cat C ½ mile and Cat D ½ mile. Baro-VNAV and VDP NA when using Logan County altimeter setting. Rwy 22 helicopter visibility reduction below ¾ SM NA. Circling Rwy 13, 31 NA at night.

MISSED APPROACH: Climb to 2700 direct SADEE and hold.

ATIS	SAINT LOUIS APP CON	PEORIA TOWER	GND CON	CLNC DEL
<b>126.1 282.2</b>	<b>125.8 269.2</b>	<b>124.0 353.85</b>	<b>121.85 348.6</b>	<b>124.675 317.55</b>



CATEGORY	A	B	C	D
LNAV/VNAV DA	1093-1 <sup>3</sup> / <sub>8</sub>		432 (500-1 <sup>3</sup> / <sub>8</sub> )	
LNAV MDA	1160-1 499 (500-1)		1160-1 <sup>3</sup> / <sub>8</sub> 499 (500-1 <sup>3</sup> / <sub>8</sub> )	
CIRCLING	1160-1 499 (500-1)		1180-1 <sup>1</sup> / <sub>2</sub> 519 (600-1 <sup>1</sup> / <sub>2</sub> )	1400-2 <sup>1</sup> / <sub>4</sub> 739 (800-2 <sup>1</sup> / <sub>4</sub> )



EC-3, 20 MAR 2025 to 17 APR 2025

EC-3, 20 MAR 2025 to 17 APR 2025