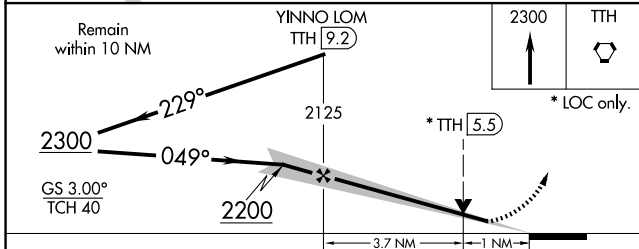
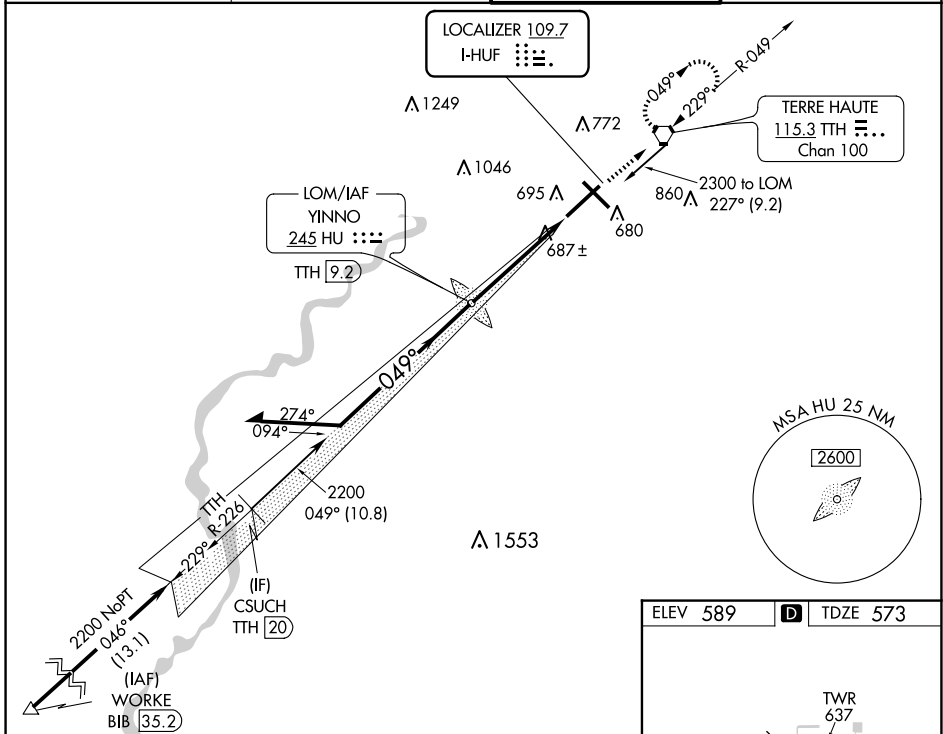


LOC I-HUF 109.7	APP CRS 049°	Rwy Idg TDZE Apt Elev	9020 573 589
---------------------------	------------------------	-----------------------------	-----------------------------------------

ILS or LOC RWY 5

TERRE HAUTE RGNL (HUF)

ADF or DME required.		<p>VDP NA when using Paris altimeter setting. When local altimeter setting not received, use Paris altimeter setting and increase all DA 61 feet and all MDA 80 feet, increase S-LOC 5 Cats C/D visibility to RVR 4500. For inop ALS, increase S-LOC 5 Cat C/D visibility to RVR 5500, when using Paris altimeter setting increase S-ILS 5 all Cats visibilities to RVR 4500 and S-LOC Rwy 5 all Cats visibility 1/2 SM. **RVR 1800 authorized with use of FD or AP or HUD to DA, NA when using Paris altimeter setting.</p>		<p>MALS R</p>	<p>MISSED APPROACH: Climb to 2300 direct TTH VORTAC and hold.</p>
ATIS 127.5 269.375	HULMAN APP CON 125.45 339.8	HULMAN TOWER 134.725 322.475	GND CON 121.6 348.6		



ELEV 589	D	TDZE 573			
<p>REIL Rwy 14, 23 and 32 HIRL Rwy 5-23 and 14-32 FAF to MAP 4.7 NM</p>					
Knots	60	90	120	150	180
Min:Sec	4:42	3:08	2:21	1:53	1:34

CATEGORY	A	B	C	D
S-ILS 5 **	773/24			
S-LOC 5	940/24	367 (400-1/2)	940/35	367 (400-5/8)
C CIRCLING	1040-1 451 (500-1)	1040-1 451 (500-1)	1220-1 3/4 631 (700-1 3/4)	1220-2 631 (700-2)

EC-2, 20 MAR 2025 to 17 APR 2025

EC-2, 20 MAR 2025 to 17 APR 2025