

APP CRS	Rwy Idg	7200
137°	TDZE	579
	Apt Elev	589

RNAV (GPS) RWY 14

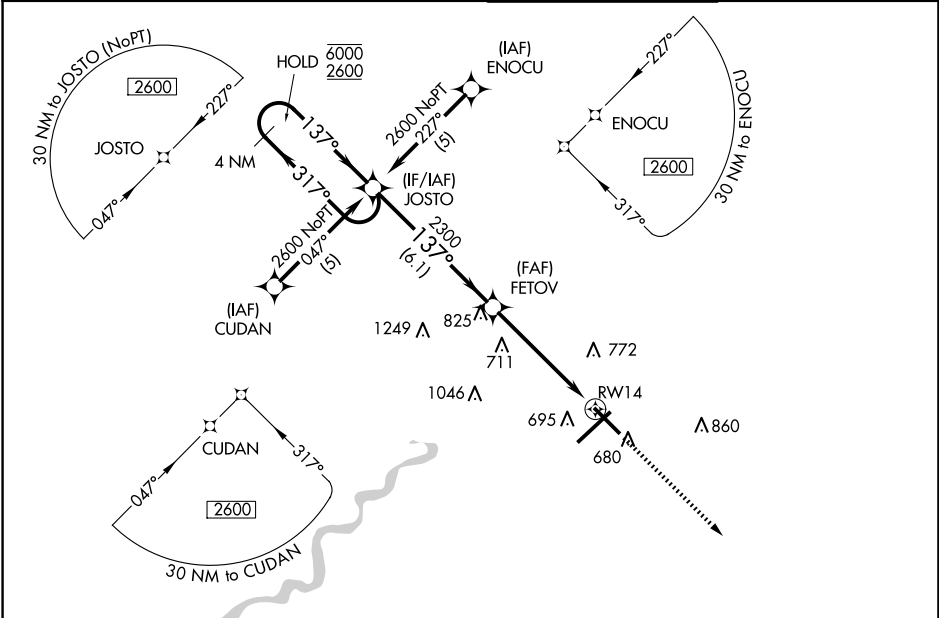
TERRE HAUTE RGNL (HUF)

RNP APCH.

V VDP NA when using Paris altimeter setting. When local altimeter setting not received, use Paris altimeter setting and increase all MDA 80 feet, increase LNAV and Circling Cat C/D visibility 1/4 SM. Rwy 14 helicopter visibility reduction below 3/4 SM NA.
A ASR

MISSED APPROACH:
 Climb to 2600 direct CORIE and hold.

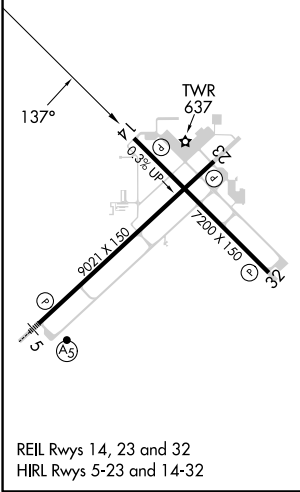
ATIS 127.5 269.375	HULMAN APP CON 125.45 339.8	HULMAN TOWER 134.725 322.475	GND CON 121.6 348.6
------------------------------	---------------------------------------	--	-------------------------------



EC-2, 20 MAR 2025 to 17 APR 2025

EC-2, 20 MAR 2025 to 17 APR 2025

ELEV 589	D	TDZE 579
----------	----------	----------



A 1553

4 NM Holding Pattern

JOSTO

6000 ← 317°

2600 → 137°

FETOV

2300

3.04° TCH 55

* 1.2 NM to RWY 14

6.1 NM

4 NM

1.2

CATEGORY	A	B	C	D
LNAV MDA	1140-1	561 (600-1)	1140-1½	561 (600-1½)
C CIRCLING	1140-1	551 (600-1)	1220-1¾ 631 (700-1¾)	1220-2 631 (700-2)

2600 CORIE

* LNAV only.