

APP CRS <b>317°</b>	Rwy Idg <b>7200</b>
	TDZE <b>589</b>
	Apt Elev <b>589</b>

# RNAV (GPS) RWY 32

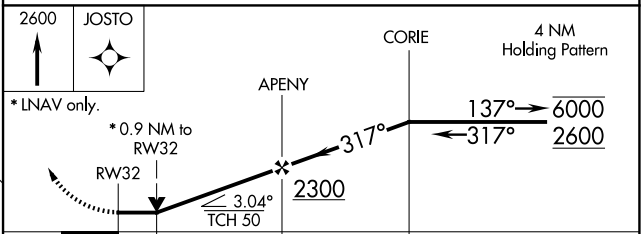
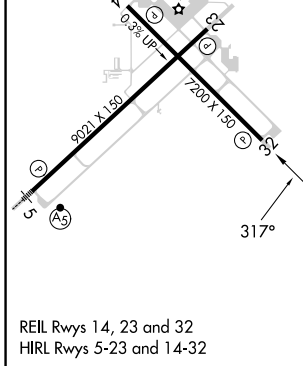
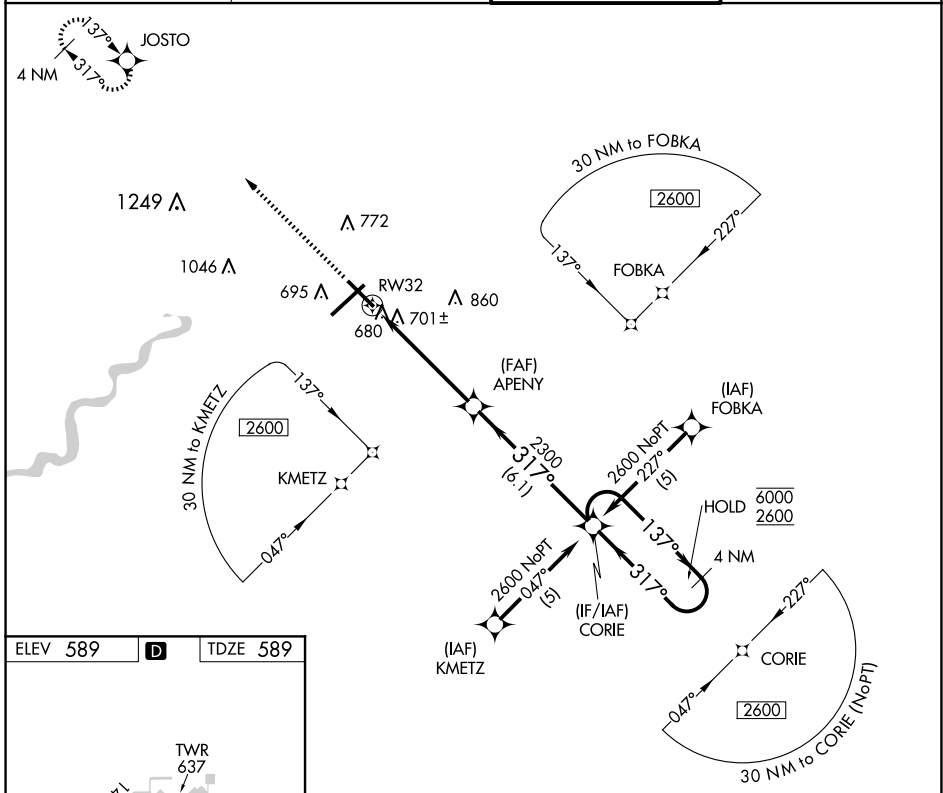
TERRE HAUTE RGNL (HUF)

RNP APCH.

▼ VDP NA when using Paris altimeter setting. Rwy 32 helicopter visibility reduction below 3/4 SM NA.  
 ▲ When local altimeter setting not received, use Paris altimeter setting and increase all MDAs 80 ASR feet, LNAV Cat C/D visibility to 1 3/8 SM and Circling Cat C/D 1/4 SM.

MISSED APPROACH: Climb to 2600 direct JOSTO and hold.

ATIS <b>127.5 269.375</b>	HULMAN APP CON <b>125.45 339.8</b>	HULMAN TOWER <b>134.725 322.475</b>	GND CON <b>121.6 348.6</b>
------------------------------	---------------------------------------	----------------------------------------	-------------------------------



CATEGORY	A	B	C	D
LNAV MDA	980-1	391 (400-1)	980-1 1/8 391 (400-1 1/8)	980-1 1/4 391 (400-1 1/4)
<b>C</b> CIRCLING	1040-1	451 (500-1)	1220-1 3/4 631 (700-1 3/4)	1220-2 631 (700-2)

EC-2, 20 MAR 2025 to 17 APR 2025

EC-2, 20 MAR 2025 to 17 APR 2025