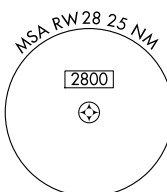
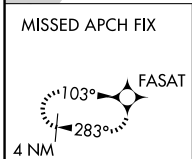
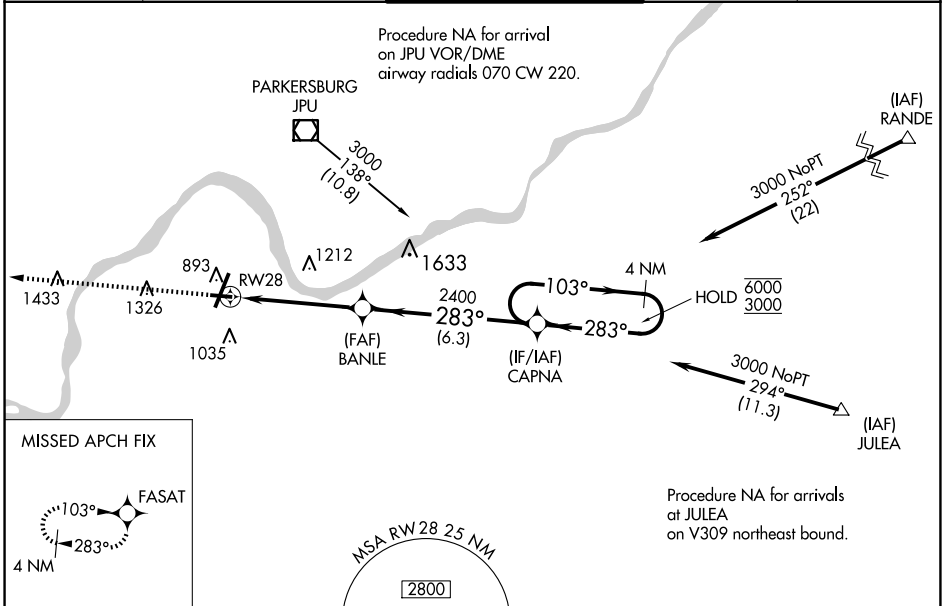


WAAS CH <b>61227</b> <b>W28A</b>	APP CRS <b>283°</b>	Rwy Idg TDZE Apt Elev	<b>4002</b> <b>839</b> <b>859</b>
--	------------------------	-----------------------------	---

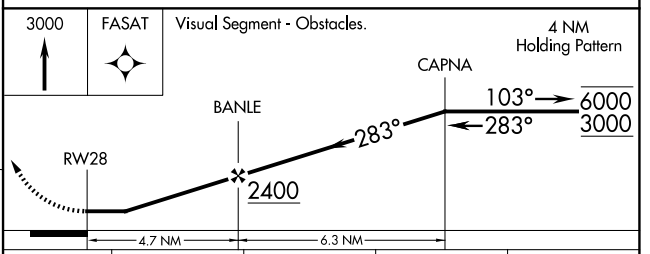
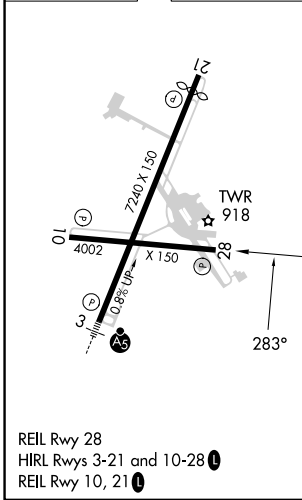
# RNAV (GPS) RWY 28

MID-OHIO VALLEY RGNL (PKB)

RNP APCH.		<p><b>▽</b> Rwy 28 helicopter visibility reduction below 1 SM NA. When local altimeter setting not received, use Athens/Albany altimeter setting and increase all MDA 100 feet, increase LP/LNAV Cats C/D visibility ¼ SM and Circling Cat C/D ½ SM. Straight-in Rwy 28 NA at night, Circling Rwy 10, 28 NA at night.</p>		<p>MISSED APPROACH: Climb to 3000 direct FASAT and hold.</p>	
ATIS <b>124.35</b>	INDIANAPOLIS CENTER <b>125.55 317.475</b>	PARKERSBURG TOWER * <b>123.7 (CTAF) 257.8</b>	GND CON <b>126.45</b>	UNICOM <b>122.95</b>	



ELEV 859	<b>D</b>	TDZE 839
----------	----------	----------



		A	B	C	D
LP	MDA	1300-1	461 (500-1)	1300-1½	461 (500-1½)
LNAV	MDA	1320-1	481 (500-1)	1320-1½	481 (500-1½)
CIRCLING		1320-1 461 (500-1)	1380-1 521 (600-1)	1640-2¼ 781 (800-2¼)	1640-2½ 781 (800-2½)

NE-4, 20 MAR 2025 to 17 APR 2025

NE-4, 20 MAR 2025 to 17 APR 2025