

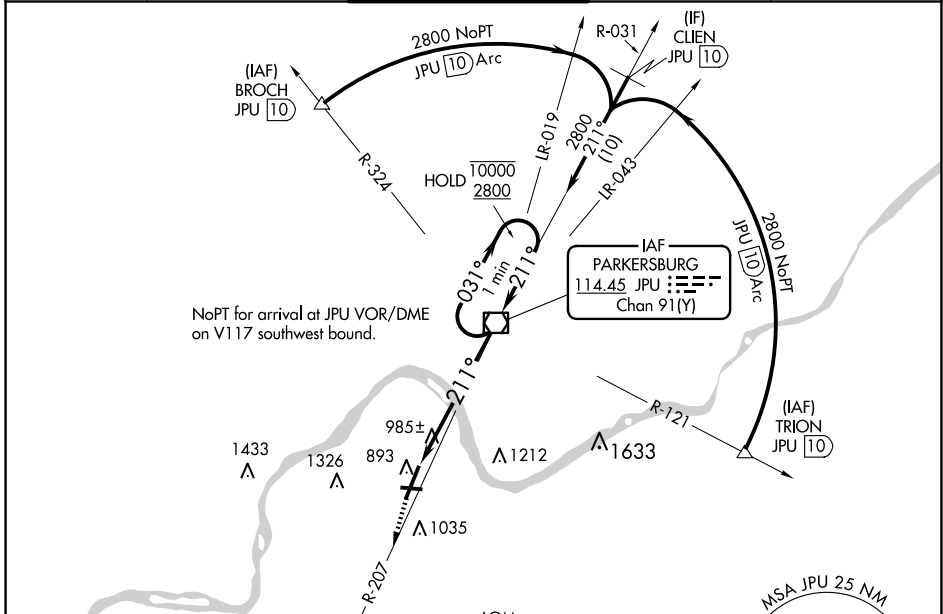
VOR/DME JPU 114.45 Chan 91 (Y)	APP CRS 211°	Rwy Idg 6780 TDZE 857 Apt Elev 859
--	------------------------	---

VOR RWY 21

MID-OHIO VALLEY RGNL (PKB)

ADF or DME required.	<p>⚠ Circling Rwy 10, 28 NA at night. Rwy 21 helicopter visibility reduction below 3/4 SM NA. VDP NA when using Athens/Albany altimeter setting. When local altimeter setting not received, use Athens/Albany altimeter setting and increase all MDA 100 feet, increase S-21 and Circling Cats C/D visibility 1/2 SM.</p>	<p>MISSED APPROACH: Climb to 2600 on JPU VOR/DME R-207 to VERSI LOM/JPU 12.3 DME and hold.</p>
----------------------	---	--

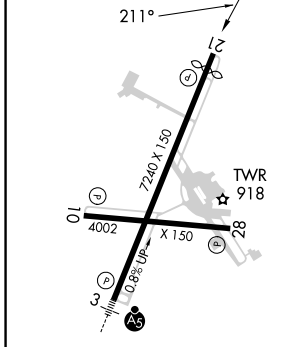
ATIS 124.35	INDIANAPOLIS CENTER 125.55 317.475	PARKERSBURG TOWER* 123.7 (CTAF) 257.8	GND CON 126.45	UNICOM 122.95
-----------------------	--	---	--------------------------	-------------------------



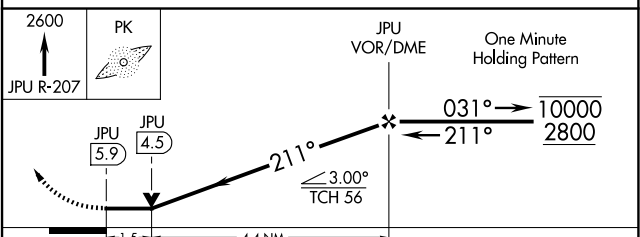
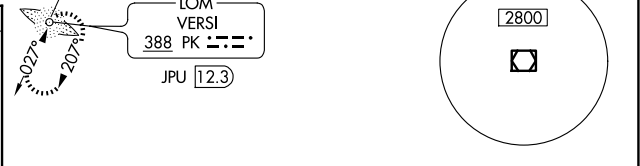
NE-4, 20 MAR 2025 to 17 APR 2025

NE-4, 20 MAR 2025 to 17 APR 2025

ELEV 859	D	TDZE 857
----------	----------	----------



REIL Rwy 28	HIRL Rwys 3-21 and 10-28	REIL Rwy 10, 21			
FAF to MAP 5.9 NM					
Knots	60	90	120	150	180
Min:Sec	5:54	3:56	2:57	2:22	1:58



CATEGORY	A	B	C	D
S-21	1380-1 523 (600-1)		1380-1½ 523 (600-1½)	1380-1¾ 523 (600-1¾)
CIRCLING	1380-1	521 (600-1)	1640-2¼ 781 (800-2¼)	1640-2½ 781 (800-2½)