

PROP ONE DEPARTURE
(PROP1, PROP) 22JUN17

- NOTE: RADAR required.
- NOTE: BIGGY departures expect vectors to SBJ/SBJ R-237.
- NOTE: COATE departures expect vectors to SAX VORTAC or SAX R-311.
- NOTE: ELIOT departures expect vectors to SAX R-252.
- NOTE: GAYEL departures expect vectors to DPK R-320.
- NOTE: LANNA departures expect vectors to PTW R-059.
- NOTE: MERIT departures expect vectors to LGA R-055.
- NOTE: NEION departures expect vectors to LGA R-322.
- NOTE: PARKE departures expect vectors to BWZ/BWZ R-250.
- NOTE: WHITE departures expect vectors to COL VOR/DME or COL R-204.
- NOTE: DIXIE departures expect vectors to JFK VOR/DME.
- NOTE: HAAYS departures expect vectors to HUO R-145.
- NOTE: BAYYS departures expect vectors to BDR VOR/DME or BDR R-054.



**TOP ALTITUDE:
3000**

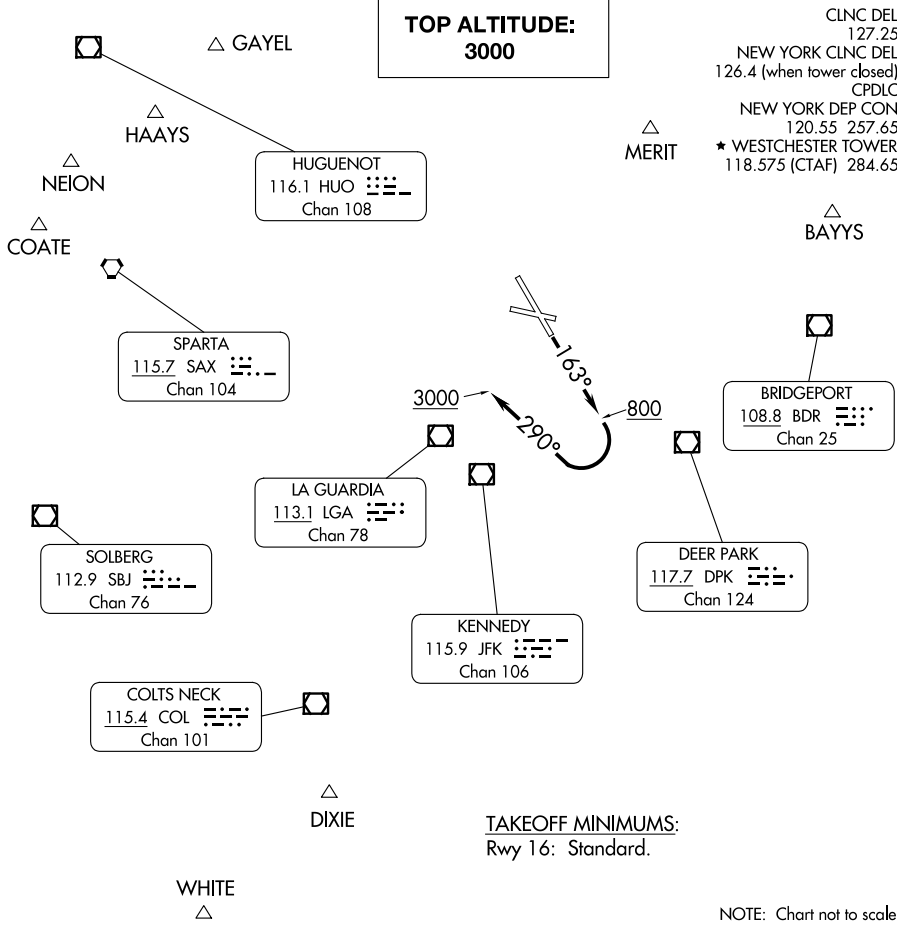
CLNC DEL
127.25
NEW YORK CLNC DEL
126.4 (when tower closed)
CPDLC
NEW YORK DEP CON
120.55 257.65
★ WESTCHESTER TOWER
118.575 (CTAF) 284.65

(PROP1, PROP) 23334
PROP ONE DEPARTURE

AL-651 (FAA)

WESTCHESTER COUNTY (HPN)
WHITE PLAINS, NEW YORK

WHITE PLAINS, NEW YORK
WESTCHESTER COUNTY (HPN)



NOTE: Chart not to scale.

PROP ONE DEPARTURE



DEPARTURE ROUTE DESCRIPTION

*TAKEOFF RUNWAY 16: Climb heading 163° to 800, then climbing right turn to 3000 on heading 290°, thence. . . .

. . . . on vectors to assigned route/fix. Maintain 3000. Expect clearance to filed altitude within 10 minutes after departure.

* NOTE: Do not exceed 190K until established on heading 290°.

NE-2, 20 MAR 2025 to 17 APR 2025

NE-2, 20 MAR 2025 to 17 APR 2025