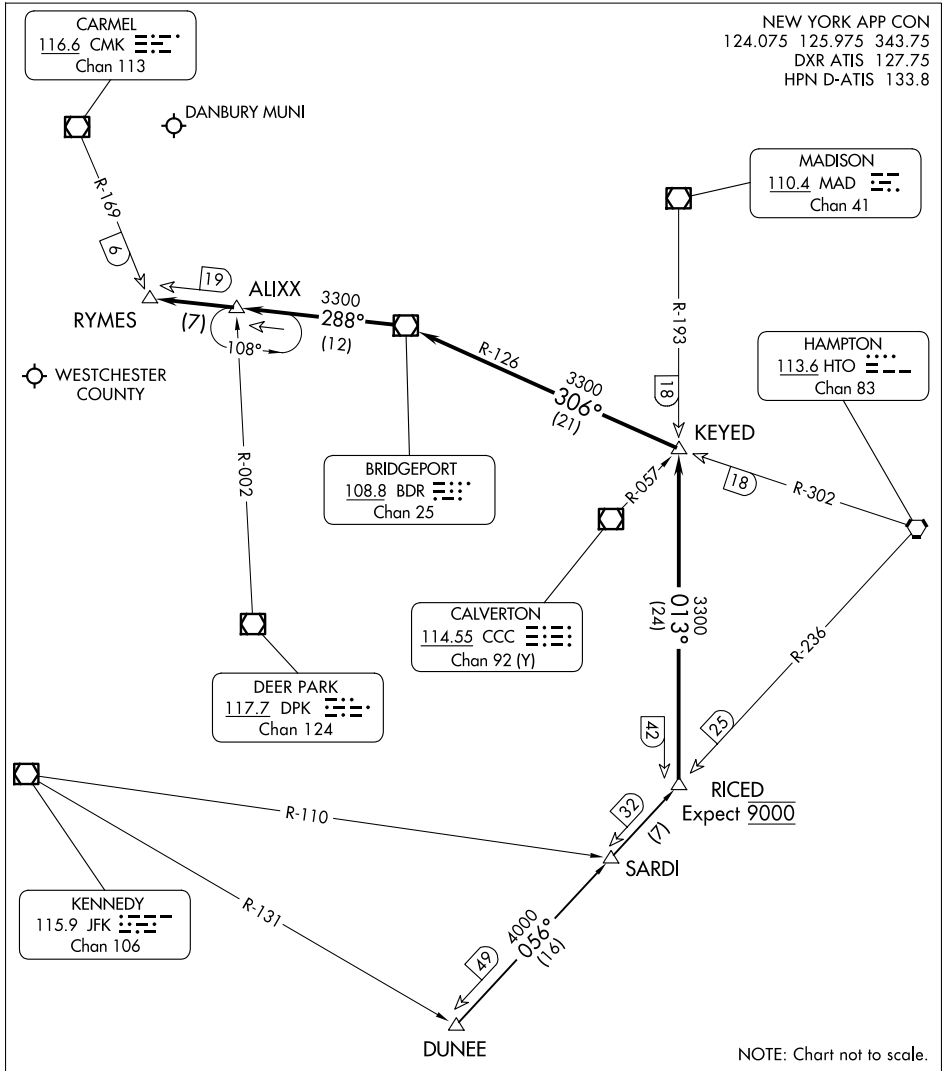


# RICED FOUR ARRIVAL

WHITE PLAINS, NEW YORK

NEW YORK APP CON  
 124.075 125.975 343.75  
 DXR ATIS 127.75  
 HPN D-ATIS 133.8



NE-2, 20 MAR 2025 to 17 APR 2025

NE-2, 20 MAR 2025 to 17 APR 2025

NOTE: Chart not to scale.

## ARRIVAL ROUTE DESCRIPTION

DUNEE TRANSITION (DUNEE.RICED4): From over DUNEE INT via HTO R-236 to RICED INT, thence. . . .

. . . .from over RICED INT via MAD R-193 to intercept BDR R-126 to BDR VOR/DME then via BDR R-288 to RYMES INT. Expect RADAR vectors to final approach course.

# RICED FOUR ARRIVAL

WHITE PLAINS, NEW YORK