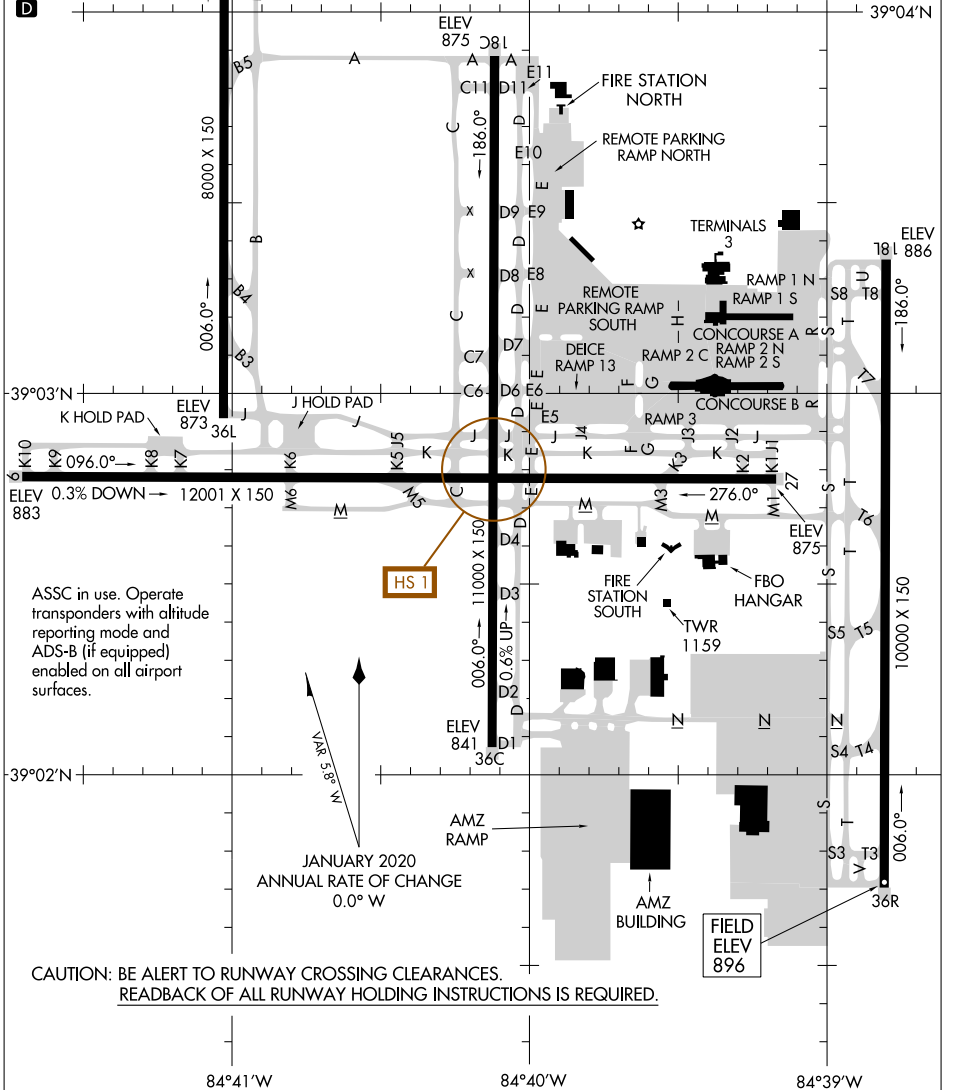


D-ATIS ARR 134.375  
 DEP 135.3  
 CINCINNATI TOWER  
 118.3 (RWYS 18C/36C, 09/27)  
 118.975 360.85 (RWY 18L/36R)  
 133.325 (RWY 18R/36L)  
 GND CON  
 121.7  
 CLNC DEL  
 127.175  
 CPDLC  
 PDC

RWY 09-27  
 PCN 101 R/B/W/T  
 S-120, D-250, 2D-550, 2D/2D2-875  
 RWY 18C-36C  
 PCN 112 F/C/W/T  
 S-120, D-250, 2D-550, 2D/2D2-875  
 RWY 18L-36R  
 PCN 127 R/B/W/T  
 S-120, D-250, 2D-550, 2D/2D2-875  
 RWY 18R-36L  
 PCN 170 R/B/W/T  
 S-120, D-250, 2D-550, 2D/2D2-875



SE-1, 20 MAR 2025 to 17 APR 2025

SE-1, 20 MAR 2025 to 17 APR 2025

ASSC in use. Operate transponders with altitude reporting mode and ADS-B (if equipped) enabled on all airport surfaces.

VAR 3.8° W  
 JANUARY 2020 ANNUAL RATE OF CHANGE 0.0° W

CAUTION: BE ALERT TO RUNWAY CROSSING CLEARANCES.  
 READBACK OF ALL RUNWAY HOLDING INSTRUCTIONS IS REQUIRED.